

MECHlift ML 220R Bin Lifter (Demountable)



Spare Parts Catalogue

- See page 2 for delivery arrangements -

Invoice values of R30,000 and above qualify for free delivery within the borders of South Africa. Delivery is by economy road freight only and may take several days.

NEEDING PARTS SOONER, PLEASE ARRANGE YOUR OWN COURIER AT YOUR OWN COST.

CONTENTS:

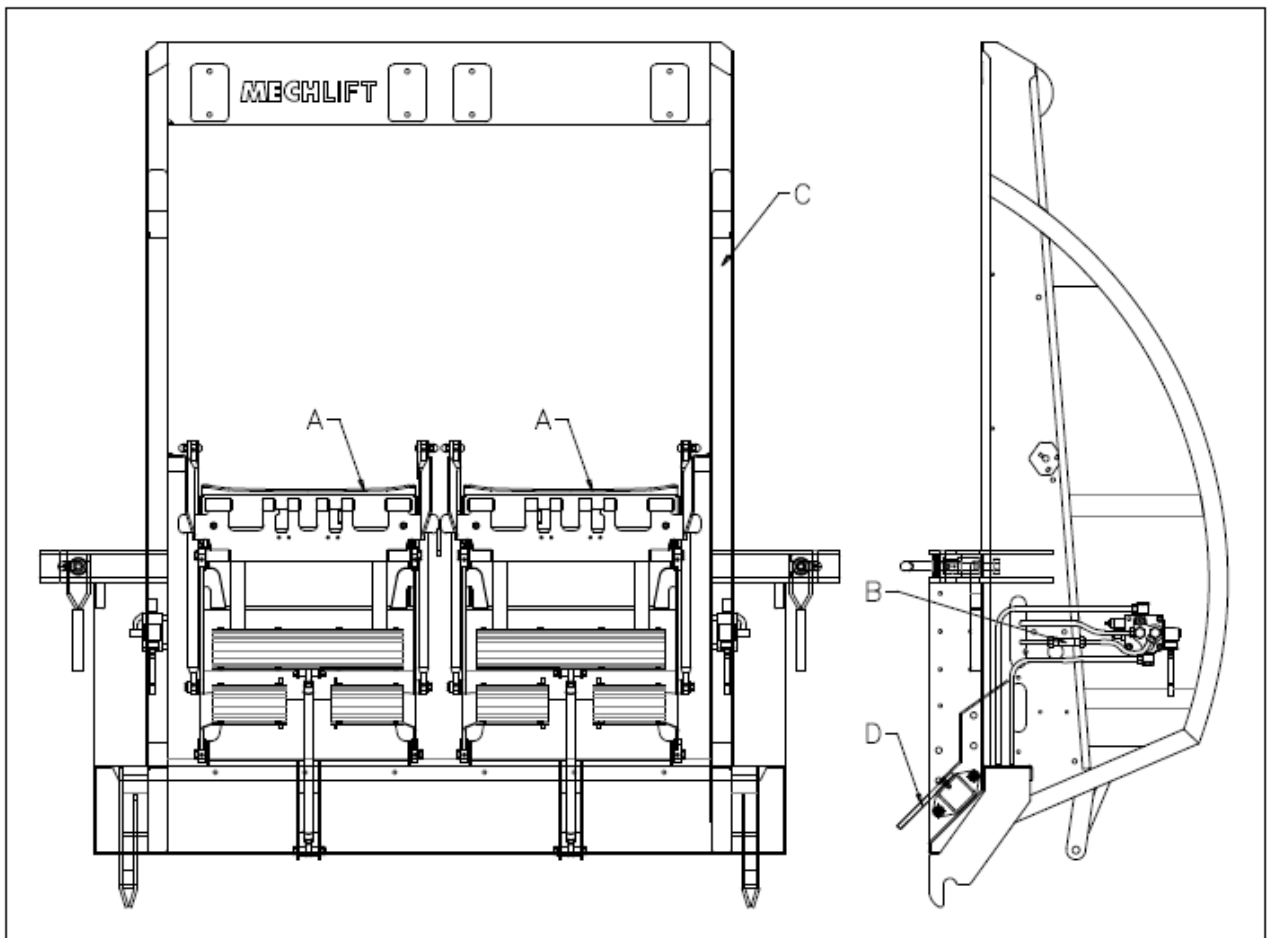
	Page
Identifying the lifter, finding its Model and Serial Number	4
Identifying the Lifter Sub-Assembly components	5
 ..Lifter sub-assembly	
Fulcrum Arm and Hub Assembly - LHS	6
Fulcrum Arm and Hub Assembly - RHS.....	7
H Frame.....	8
Comb Frame.....	9
Long Link Rod.....	10
Short Link Rod	11
Swing Frame.....	12
Re-Bush Service kits.....	13
 ..Main Frame assembly	
Main Frame.....	14
Carrier Frame.....	15
Sill Seal Assembly	16
 ..Hydraulics	
Hydraulic System.....	19
Actuator Service Parts	21

Partsmen:

- **Always** quote the Mechlift part numbers when ordering parts
- Part numbers ending in 1 or 3 usually refer to Left Hand Side parts
- Part numbers ending in 2 or 4 usually refer to Right Hand Side parts
- If in doubt, please feel free to contact Mechlift, we are always willing to assist

ML 220R BIN LIFTER ASSEMBLY

Part Number 22 00 105 A

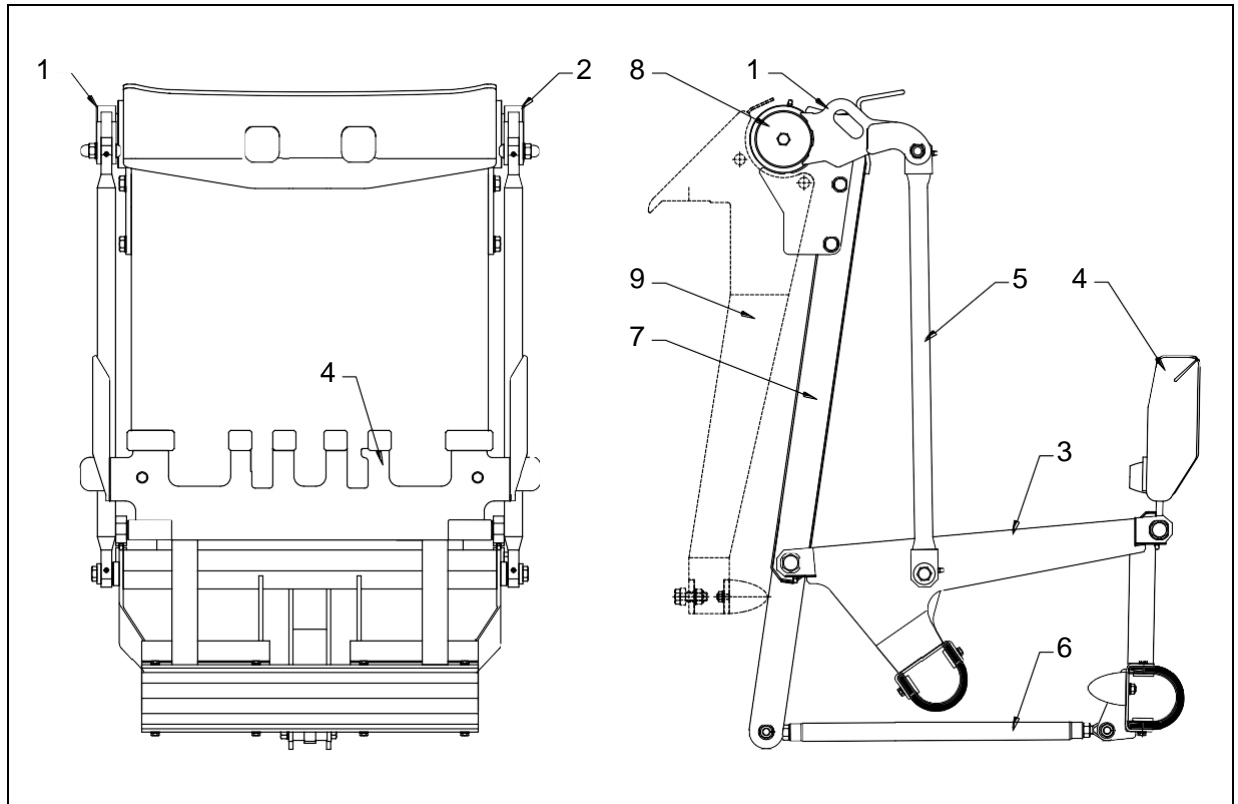


SECTION	PART
A	LIFTER SUB ASSEMBLIES (LH & RH are identical)
B	HYDRAULIC SYSTEM
C	FRAME ASSEMBLY (including Carriers)
D	SILL SEAL ASSEMBLY

Ensure you have the Model and Serial Numbers on hand **BEFORE** ordering spares

LIFTER SUB ASSEMBLY

Part Number: 22 00 015 A



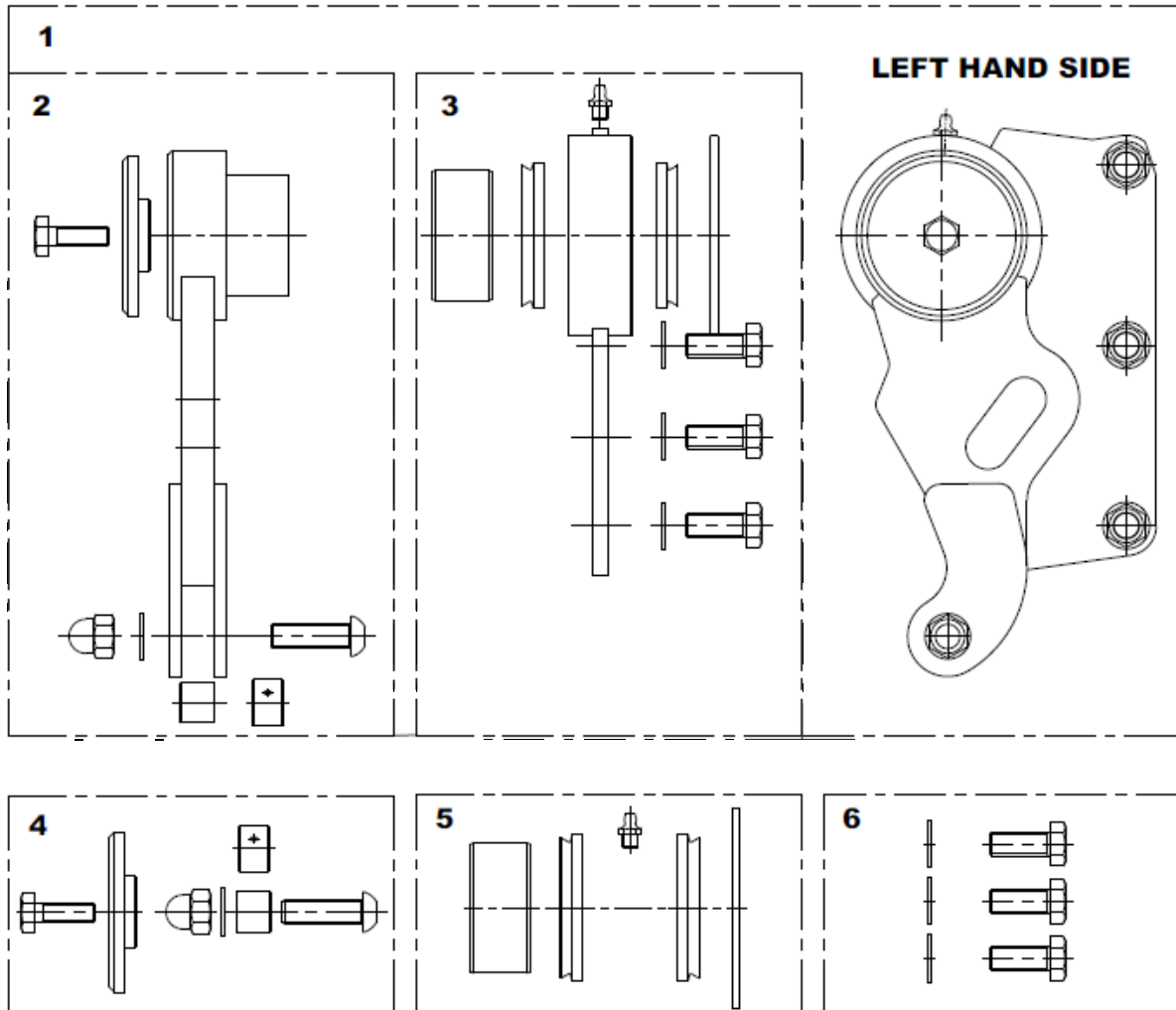
This page tells you what the above parts are called and on what page to find them.

No.	PART	
1	FULCRUM ARM AND HUB ASSEMBLY - LEFT HAND	Page 6
2	FULCRUM ARM AND HUB ASSEMBLY - RIGHT HAND	Page 7
3	H-FRAME ASSEMBLY	Page 8
4	COMB FRAME ASSEMBLY	Page 9
5	LONG LINK ROD ASSEMBLY	Page 10
6	SHORT LINK ROD ASSEMBLY (or Lower Link Rod)	Page 11
7	SWING FRAME ASSEMBLY	Page 12
8	ACTUATOR (hidden) and SERVICE PARTS	Page 20
9	CARRIER FRAME	Page 15

This sub-assembly is sold as a ready part – Contact Mechlift

FULCRUM ARM AND HUB ASSEMBLY - *LEFT HAND*

Part Number: 22 20 001 A

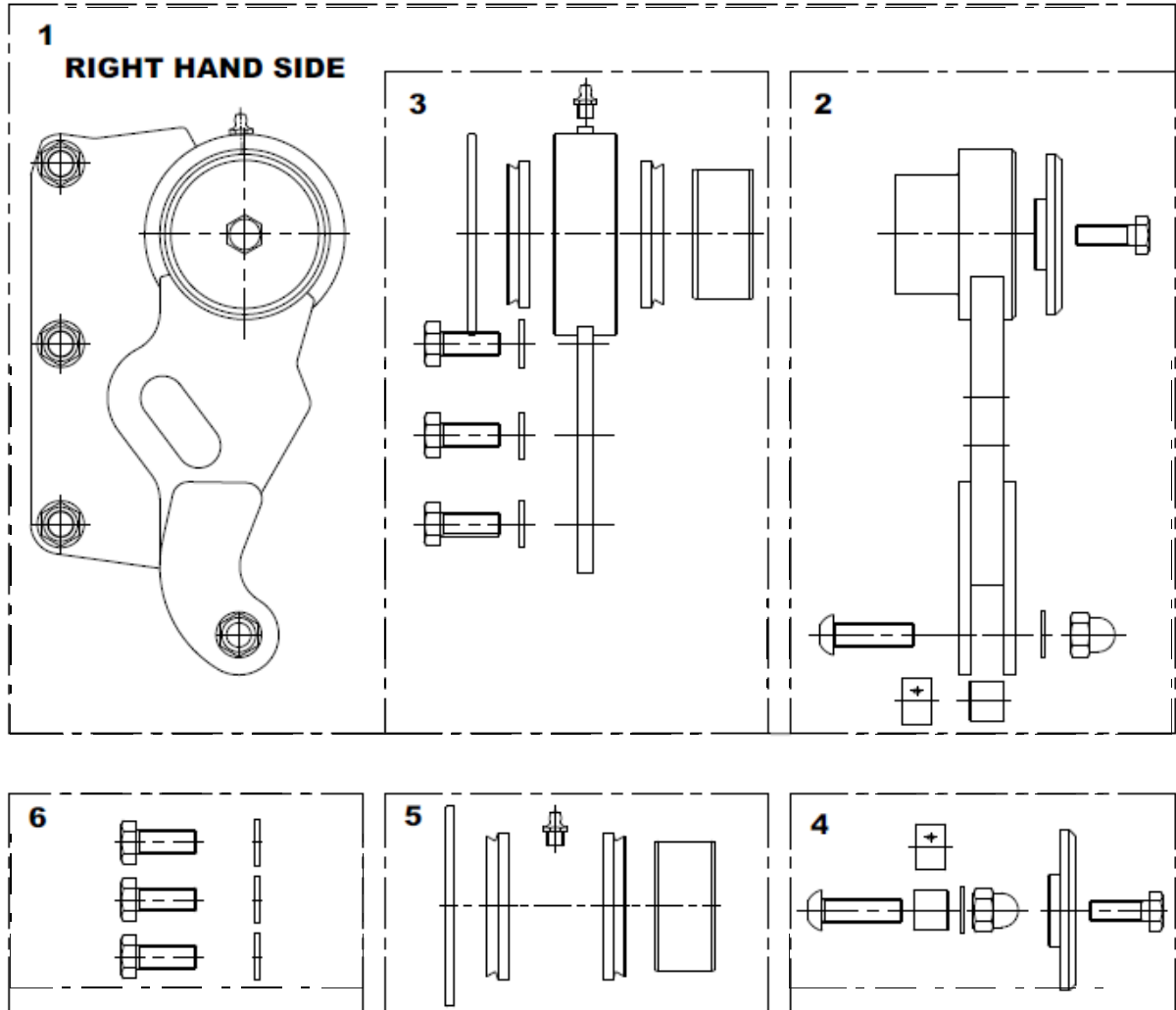


Refer to page 13 for single comprehensive re-bush kits covering the whole lifter

Block	Part No.	Part	Qty per Lifter
1	22 20 001 A	FULCRUM ARM & HUB ASSEMBLY LH (includes blocks 2+3)	1
2	22 20 011 A	FULCRUM ARM ASSEMBLY LH (includes 4)	1
3	22 20 021 A	SWING PLATE ASSEMBLY (includes 5 + 6)	1
4	07 92 210 K	BUSHING KIT – Fulcrum Arm	2
5	07 92 220 K	BUSHING KIT – Swing Plate	2
6	07 92 703 K	BOLT KIT – Swing Plate to Swing Frame	2

FULCRUM ARM AND HUB ASSEMBLY - *RIGHT HAND*

Part Number: 22 20 002 A

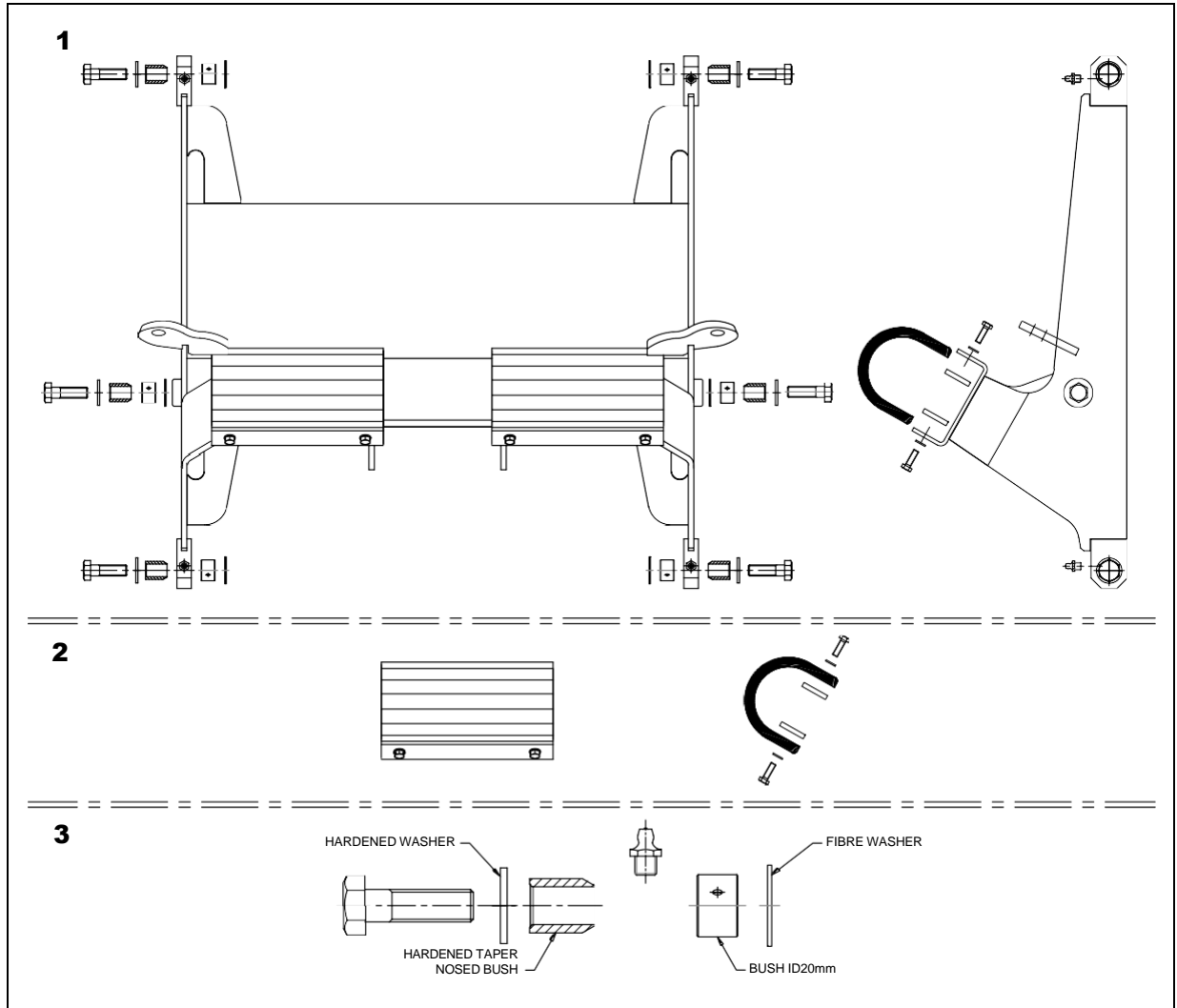


Refer to page 13 for single comprehensive re-bush kits covering the whole lifter

Block	Part No.	Part	Qty per Lifter
1	22 20 002 A	FULCRUM ARM & HUB ASSEMBLY RH (includes blocks 2+3) w/o Trigger plate	1
2	22 20 012 A	FULCRUM ARM ASSEMBLY RH (includes 4)	1
3	22 20 022 A	SWING PLATE ASSEMBLY (includes 5 + 6)	1
4	07 92 210 K	BUSHING KIT – Fulcrum Arm	2
5	07 92 220 K	BUSHING KIT – Swing Plate	2
6	07 92 703 K	BOLT KIT – Swing Plate to Swing Frame	2

H-FRAME ASSEMBLY

Part Number: 22 40 000 A



Block	Part No.	Part	Qty per Lifter
1	22 40 000 A	H-FRAME ASSEMBLY (includes blocks 2 + 3)	1
2	07 92 403 K	RUBBER PUSH PAD KIT – H-Frame	2
3	07 90 100 K	JOINT SERVICE KIT (Taper Nose Bush)	6

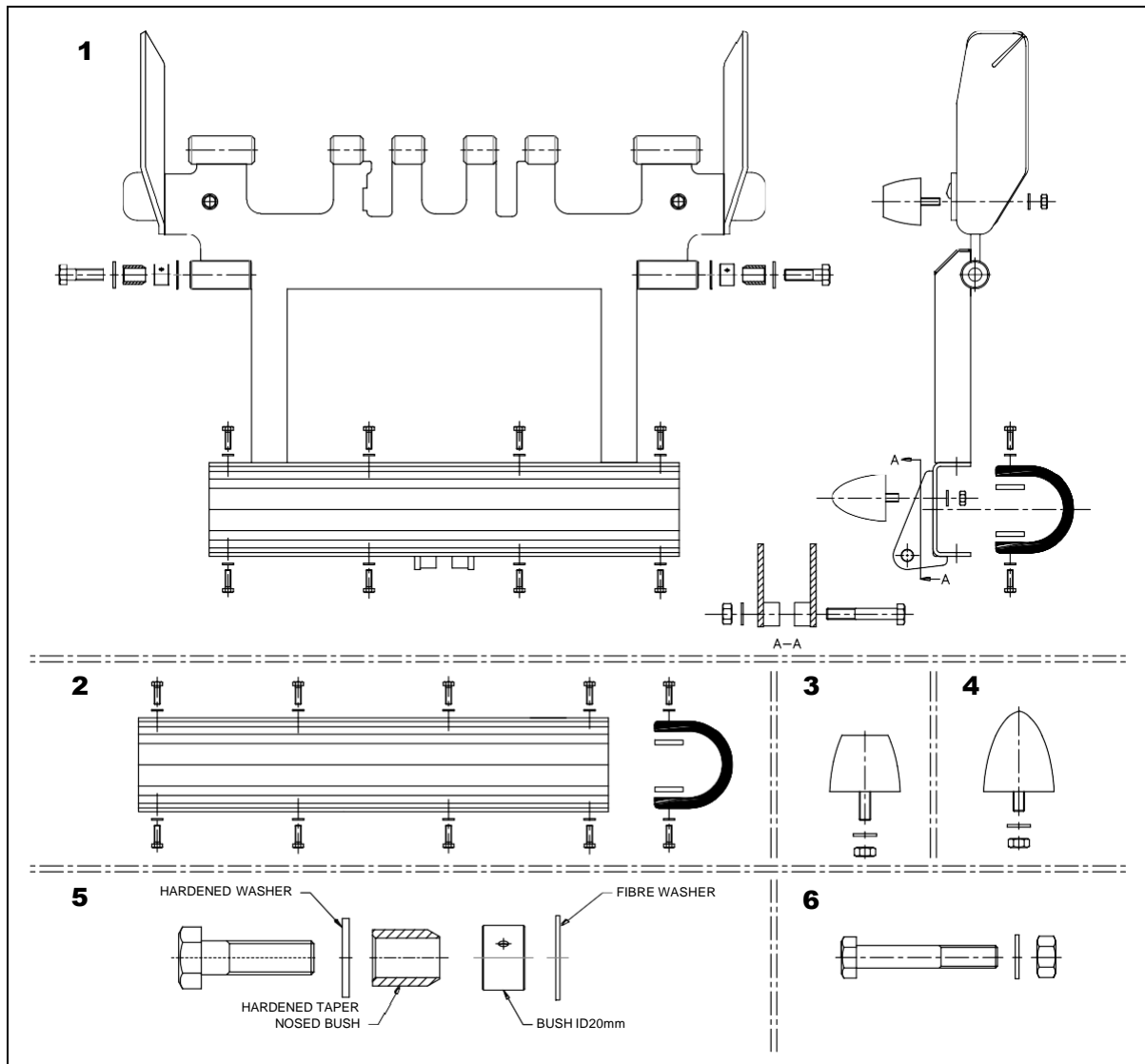
Refer to page 13 for single comprehensive re-bush kits covering the whole lifter

NOTE:

- Two rubber push pads per H-Frame
- Six joint service kits (Taper Nose Bush) per H-Frame

COMB FRAME ASSEMBLY

Part Number: 22 50 000 A



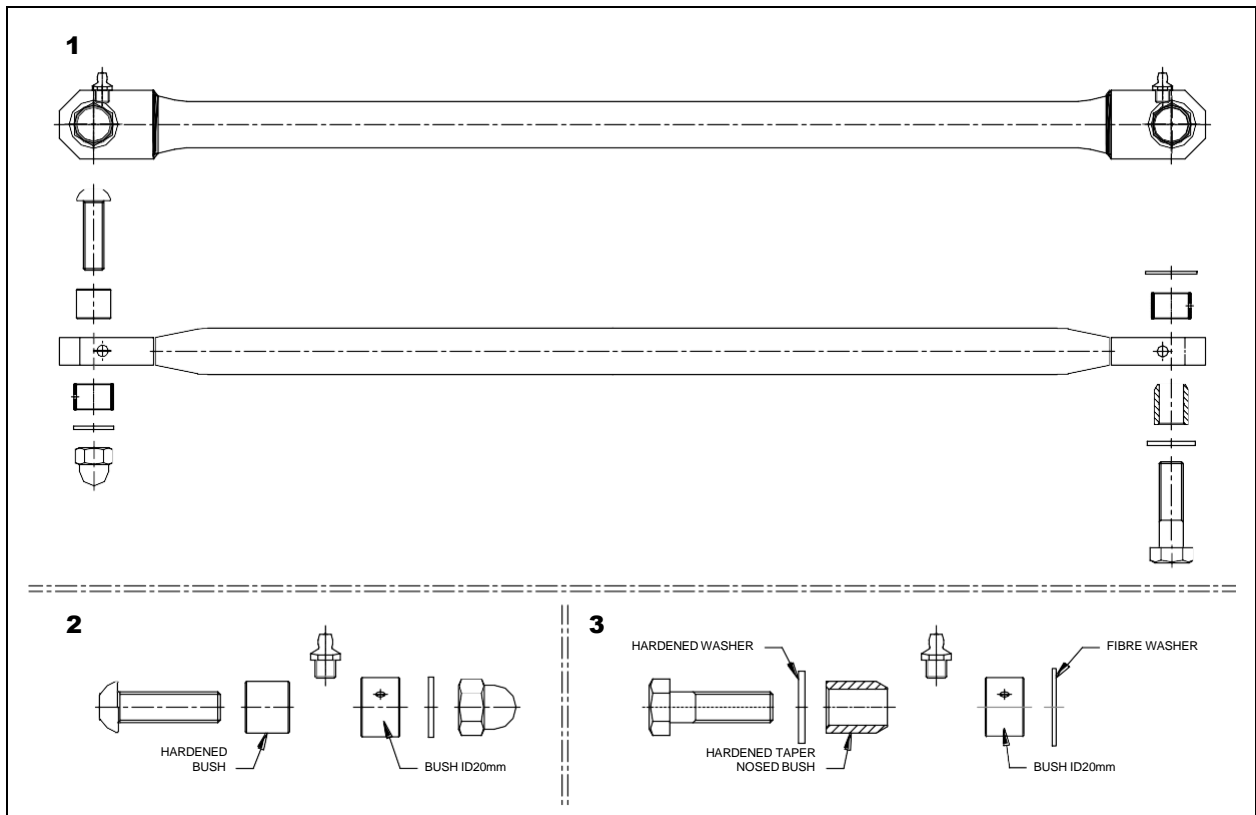
*** ACTUAL COMB PROFILE MAY DIFFER FROM OUTLINE ABOVE**

Block	Part No.	Part	Qty per Lifter
1	22 50 000 A	COMB FRAME ASSEMBLY (Includes blocks 2, 3, 4, 5 + 6)	1
2	07 92 503 K	RUBBER PUSH PAD KIT – Comb Frame	1
3	05 10 132 K	CONICAL BUMP RUBBER KIT – Flat Top	2
4	05 10 160 K	CONICAL BUMP RUBBER KIT – 60mm	2
5	07 90 100 K	JOINT SERVICE KIT (Taper Nose Bush)	2
6	NPN	BOLT M12 x 80 + WASHER + NUT	1

Refer to page 13 for single comprehensive re-bush kits covering the whole lifter

LONG LINK ROD ASSEMBLY

Part Number: 22 61 100 A



Block	Part No.	Part
1	22 61 100 A	LONG LINK ROD ASSEMBLY (includes blocks 2 + 3)
2	07 90 101 K	JOINT SERVICE KIT (Plain Bush)
3	07 90 100 K	JOINT SERVICE KIT (Taper Nose Bush)

Refer to page 13 for single comprehensive re-bush kits covering the whole lifter

NOTE:

- Two Long Link Rods are required for each Sub Assembly, and four required per complete lifter.

SHORT LINK ROD ASSEMBLY

Part Number 22 62 100 A



Block	Part No.	Part	Qty
1	22 62 100 A	SHORT LINK ROD ASSEMBLY (includes block 2, Bolt Kits x 2)	2
2	07 92 504 K	BOLT KIT – Short Link Rod Attachment Points	4

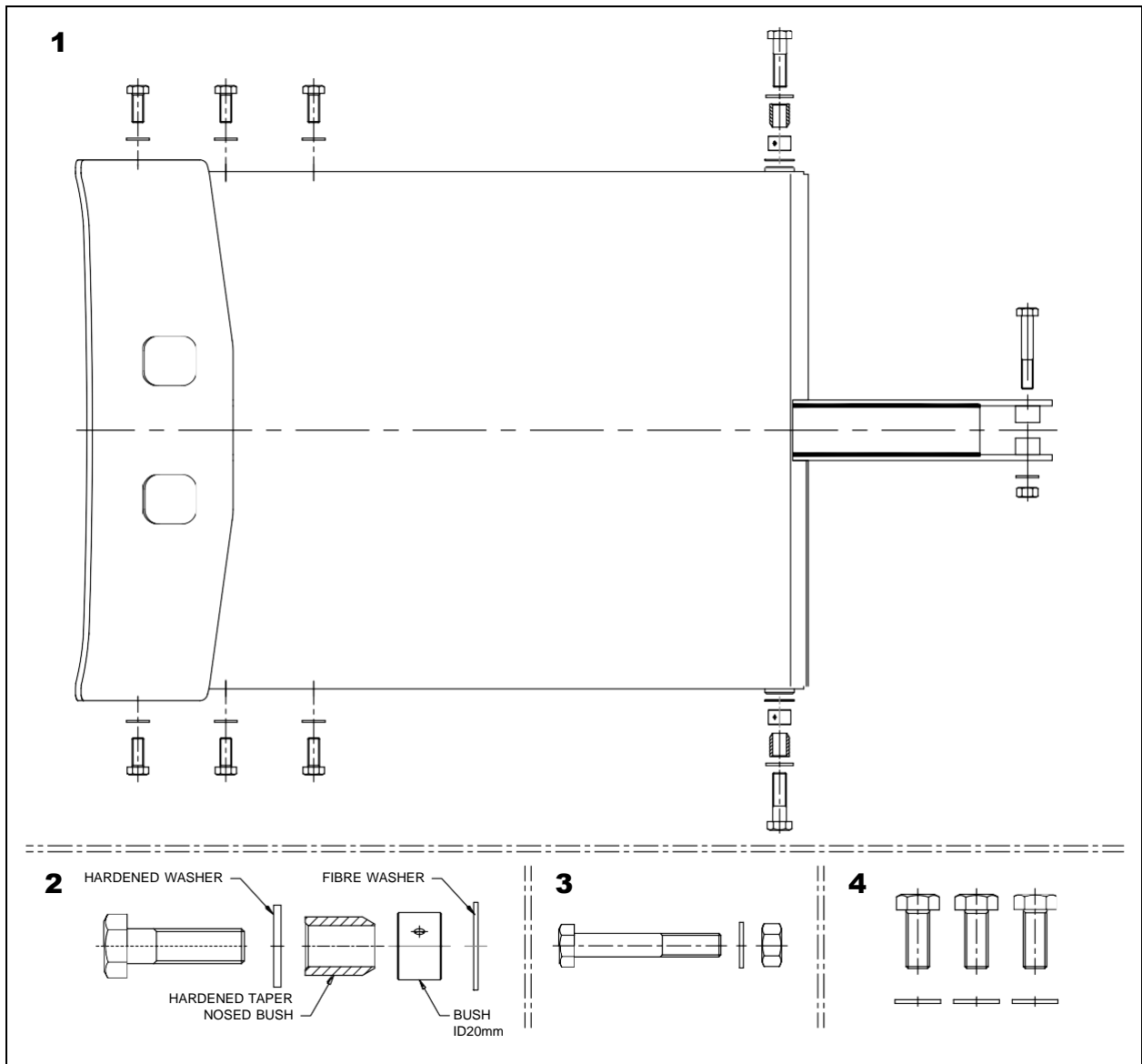
Refer to page 13 for single comprehensive re-bush kits covering the whole lifter

NOTE:

- One Short Link Rod is required for each sub assembly, and two are required per complete lifter.

SWING FRAME ASSEMBLY

Part Number: 22 70 000 A



***** ACTUAL FRAME PROFILES MAY DIFFER FROM OUTLINE ABOVE *****

Block	Part No.	Part	Qty per Lifter
1	22 70 000 A	SWING FRAME ASSEMBLY (includes blocks 2,3+4)	1
2	07 90 100 K	JOINT SERVICE KIT (Taper Nose Bush)	2
3	NPN	BOLT M12 x 80 + WASHER + NUT	1
4	07 92 703 K	BOLT KIT – Swing Plate to Swing Frame	2

Refer to page 13 for single comprehensive re-bush kits covering the whole lifter

RE-BUSH SERVICE KITS

These service kits do not contain parts for servicing the actuators. (See page 20 for actuator parts)		
Part No.	Part	Qty
22 01 003 A	REBUSH KIT – BASIC (A Service)	1
consists of	Taper Nosed Bush - Hardened	6
	Swivel Bush - Hardened	4
	Bush ID20mm	10
	M12 Dome Nut	2
	M14 x50 Screw H8	6
	M12 x40 Button Head Screw	2
	M12 Washer	6
	M12 Nut	2
	M12 x 80mm Bolt	2
	20mm Fibre Washer	6
	M8 x1.25 Grease nipple – straight	12
	M14 Washer - Hardened	6
Part No.	Part	Qty
22 01 006 A	REBUSH KIT – Comprehensive (B Service)	1
consists of	REBUSH KIT – BASIC <i>plus</i>	1
	Bush ID60mm	2
	V-Ring	4
	Washer – Shaft end	2
	Fulcrum arm spacer	2
	M10 x30 Screw H8	2

NOTE:

- these kits are for servicing a single Sub Assembly (as shown on page 5).
- Two kits are required to service the Complete lifter (i.e. both left and right hand sides).

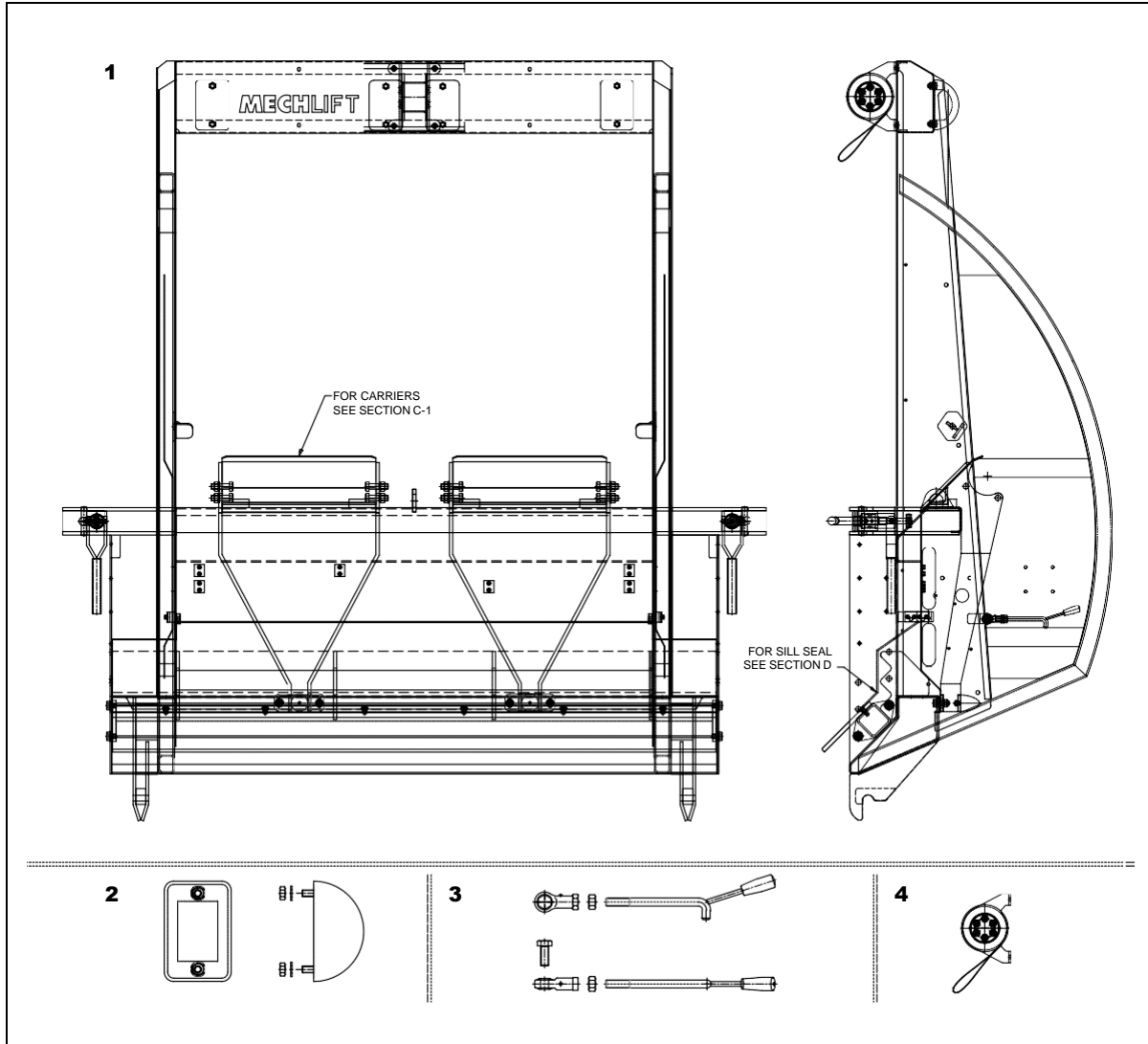
HARDENED TAPER NOSED WEARING BUSHES and WELD-ON ENDS ARE AVAILABLE IN BULK AS FOLLOWS:

- 03 20 120 T -- Taper nose bush (Hardened) (25pcs)
- 22 61 120 T -- Weld on rod end (H-Frame and Link Rods) (15pcs)
- BPAP 2015 -- Permaglide bush (15pcs)

REMEMBER – buying in bulk is more economical

FRAME ASSEMBLY

Part Number: 22 90 005 A



Section C (Frame Assembly):

Block	Part No.	Part	Qty per Frame
1	22 90 005 A	FRAME ASSEMBLY (includes blocks 2,3,4 & SILL SEAL on page 16)	1
2	07 90 103 K	WHEEL BUMP RUBBER KIT	4
3	07 92 913 K	HOOK KIT	1
4	22 05 000 A	SLIP PULLEY ASSEMBLY	1
5	22 05 017 X	STRAP only (item 4)	1

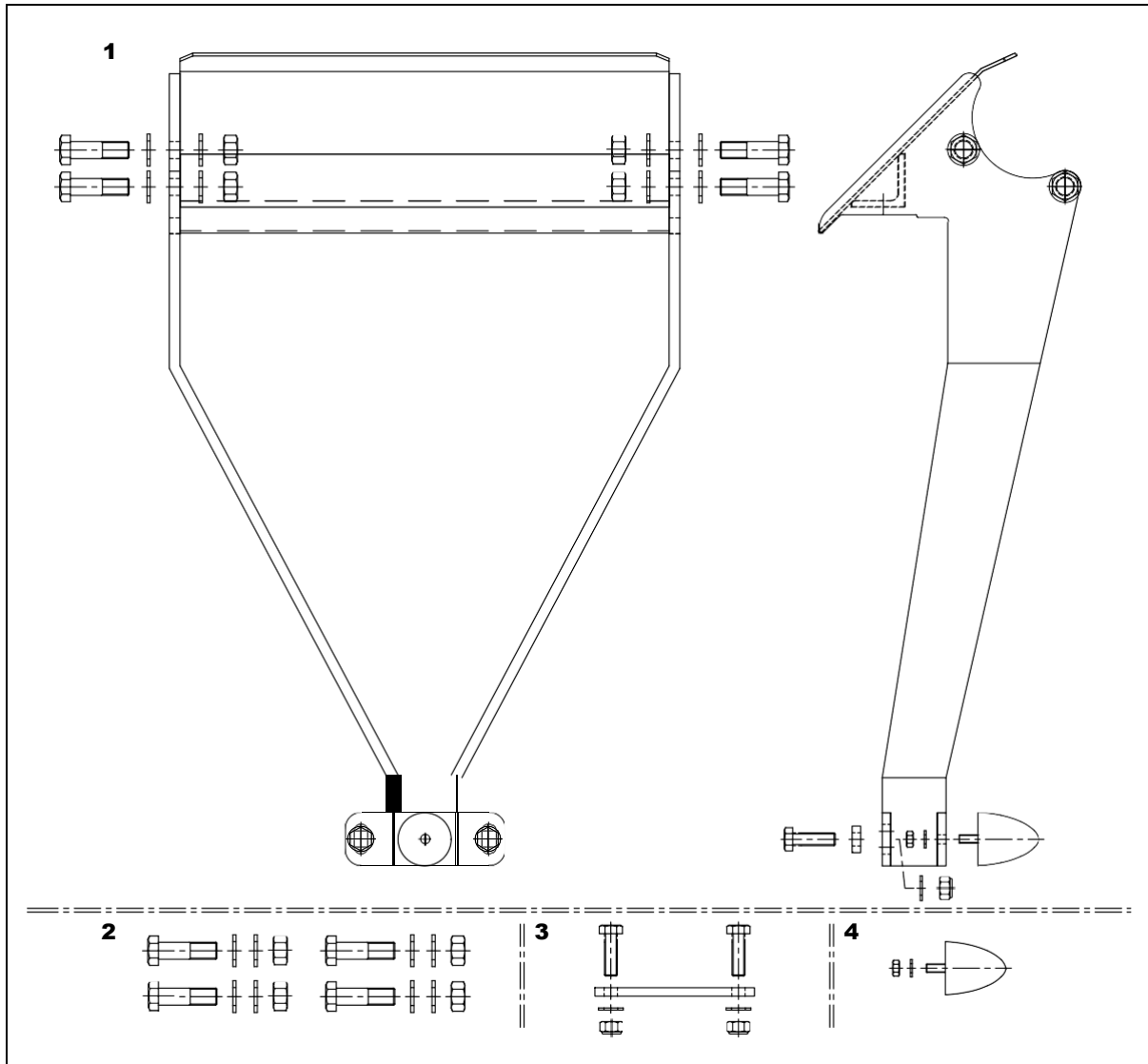
Top horizontal channel (with MECHLIFT Logo) is available.

Part No 22 92 115 G -- It is a weld in component.

Enquire about J-Bolt Part No 22 91 078 E

CARRIER FRAME ASSEMBLY

Part Number: 22 91 200 A

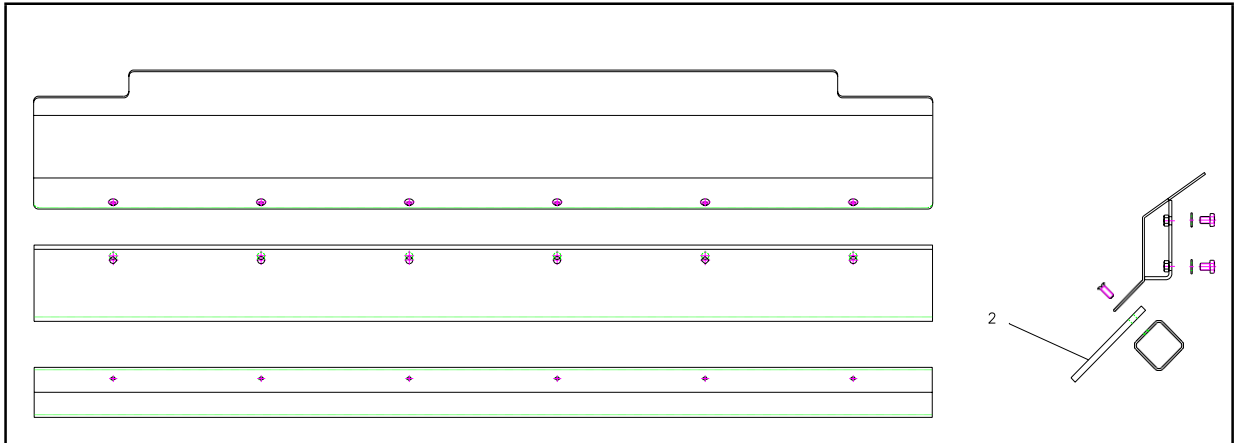


Section C – 1 (Carrier Frame Assembly):

Block	Part No.	Part	Qty per Frame
1	22 91 200 A	CARRIER FRAME ASSEMBLY (includes blocks 2, 3 + 4)	2
2	07 90 106K	KIT – ACTUATOR FASTENERS	1
3	07 92 914 K	CARRIER LOWER MOUNT KIT	1
4	05 10 160 K	CONICAL BUMP RUBBER KIT	1

SILL SEAL ASSEMBLY

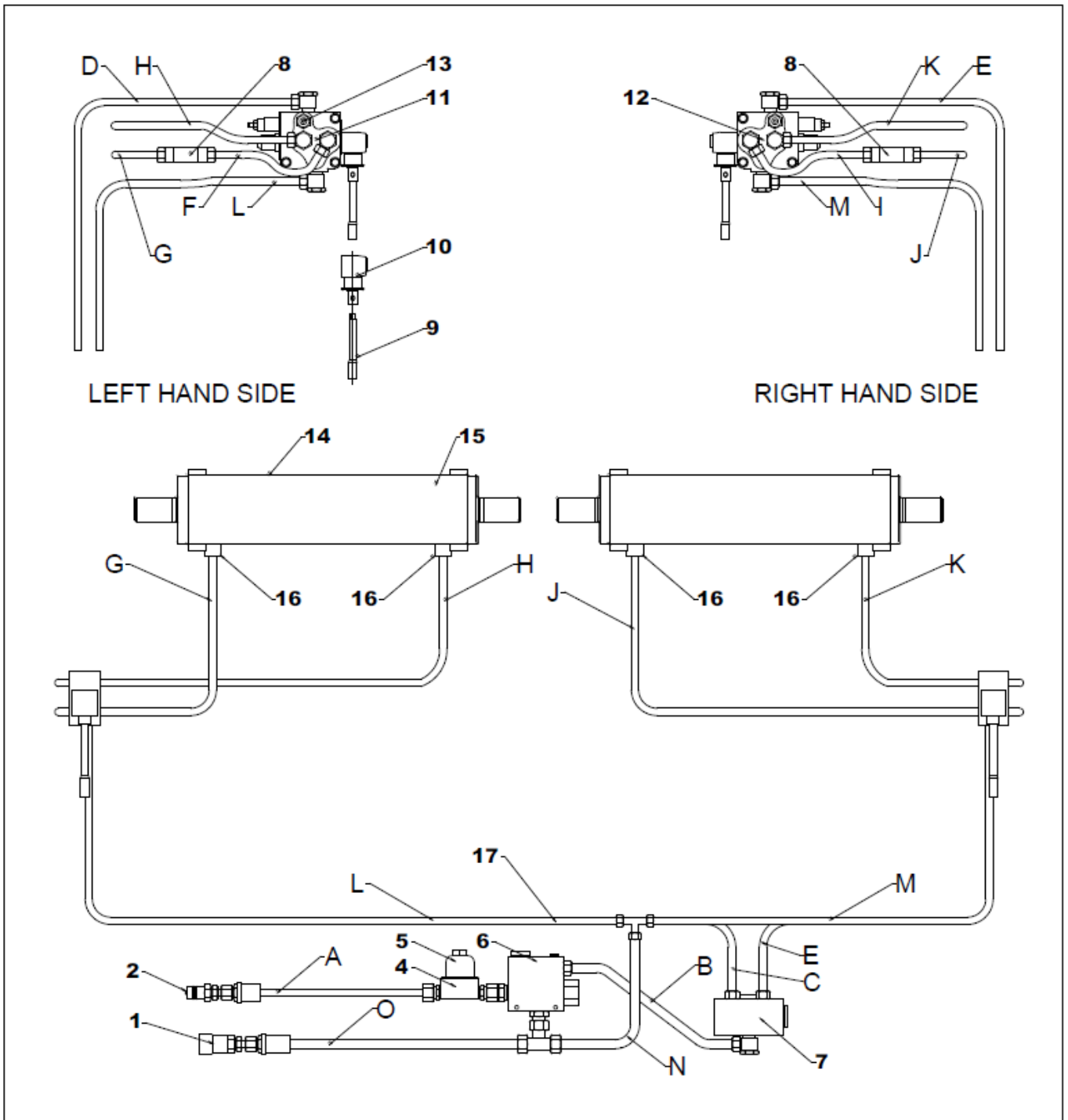
Part Number: 22 91 080 A



Item	Part No.	Part	Qty per Frame
1	22 91 080 A	SILL SEAL ASSEMBLY (complete)	1
2	22 91 089 D	RUBBER - PUNCHED (only)	1

Make your notes below

HYDRAULIC SYSTEM



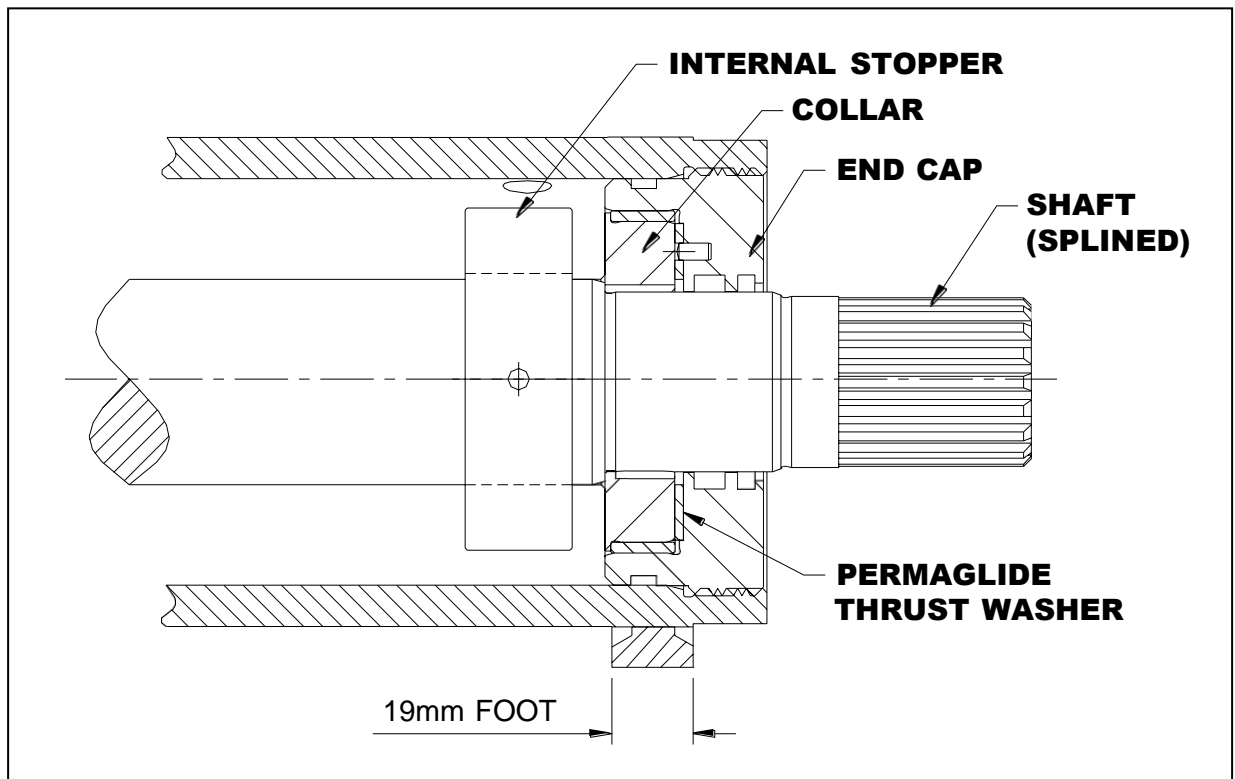
HYDRAULIC SYSTEM CONTINUED

No.	Part No.	Part	Qty per Frame
1	HCF12 5.ISO	QUICK COUPLER ½ FEMALE	1
2	HCM12 5.ISO	QUICK COUPLER ½ MALE	1
4	HV.FIL.125	FILTER complete <i>O//T Bowl type</i>	1
4a	HV.FIL60.IKR	FILTER complete <i>IKRON Cylindrical shape</i>	1
5	HV.FIL.EL.125	FILTER ELEMENT for <i>O//T Brand</i> See page 21	1
5a	HV.FIL60.EL.IKR	FILTER ELEMENT for <i>IKRON Brand</i> See page 21	1
6	HV.FLO.REG.38	FLOW REGULATOR VALVE MODEL 38	1
7	HV.VDFR.12.40	FLOW DIVIDER VALVE	1
8	HV.FLO.REST.25	FLOW RESTRICTOR	2
9	01 40 010 R	VALVE HANDLE	2
10	HV.VCD.BOX	LEVER BOX ASSEMBLY (shaped square)	1
10b	HV.VCD.CAP	END CAP ASSY (shaped round & spring side)	1
11	HV.VCD20.LH	CONTROL VALVE LH (Includes LeverBox but excludes Fittings & Handle)	1
12	HV.VCD20.RH	CONTROL VALVE RH (Includes LeverBox but excludes Fittings & Handle)	1
13	HMINI3.8	MINITEST COUPLING	2
14	08 10 117 X	ACTUATOR	2
16	03 70 001 T	SPECIAL FITTING – Actuator Port	4
17	22 10 001 E	HYDRAULIC PIPE SET - ROCKER	1
17b	22 10 000	Individual pipes by special order - non plated	1

HYDRAULIC PIPES

Pipe	Description	Qty
A	MALE QUICK COUPLER TO FILTER (INLET)	1
B	FLOW REGULATOR VALVE TO FLOW DIVIDER VALVE	1
C	FLOW DIVIDER VALVE TO LHS PIPE CONNECTOR ON PIPE 'D'	1
D	LH CONTROL VALVE SUPPLY FROM PIPE CONNECTOR ON 'C'	1
E	FLOW DIVIDER VALVE TO SUPPLY ON RH CONTROL VALVE	1
F	LH CONTROL VALVE TO FLOW RESTRICTOR	1
G	FLOW RESTRICTOR TO LH ACTUATOR SUPPLY PORT	1
H	LH ACTUATOR RETURN PIPE TO LH CONTROL VALVE	1
I	RH CONTROL VALVE TO FLOW RESTRICTOR	1
J	FLOW RESTRICTOR TO RH ACTUATOR SUPPLY PORT	1
K	RH ACTUATOR RETURN PIPE TO RH CONTROL VALVE	1
L	LH VALVE RETURN PIPE TO TEE COUPLING	1
M	RH VALVE RETURN PIPE TO TEE COUPLING	1
N	RETURN TEE COUPLING TO FLOW REGULATOR	1
O	RETURN FLOW REGULATOR TO FEMALE COUPLING	1

ACTUATOR SERVICE PARTS



Part No.	Part	Qty
08 10 117 X	ACTUATOR	1
A SKH25 000	SEAL & BRG KIT – For full overhaul (Genuine OEM)(includes stopper , thrust washers and seals)	1
A SKH25 300	SEAL KIT – End cap side only (Genuine OEM)(includes wiper, seal, o’ring, backup ring)	2
06 10 116 T	ACTUATOR INTERNAL STOPPER (use only genuine part)	1
BPAW 48 P10	THRUST WASHER	2
08 10 117 X SFT	*SHAFT <i>Confirm price AND supply actuator serial number</i>	1
08 10 117 X CO	COLLAR	2
08 10 117 X EC	END CAP (without seals)	2

NB

Observe internal timing marks **BEFORE** pulling piston and shaft from bar

*** replacing shaft? Best Fulcrum Arms also renewed**

ONLY ON THE **ML220R LIFTER**, MECHLIFT
HAS REPLACED THE **O//T BRAND** BRASS
BOWL FILTER WITH THE **IKRON BRAND**
CYLINDRICAL SHAPE FILTER.

Replacement elements are **NOT**
interchangeable.

Demount Lifters affected are from mid-2020
Serial Number 20034 onwards

Please direct enquiry to sales@mechlift.com

Contact information:

Please feel free to contact us should you have any queries or need any further information:

Telephone:	+27 (0) 21 386 0404
Fax:	+27 (0) 21 385 1885
E-mail:	
... General enquiries	query@mechlift.com
... Sales enquiries	sales@mechlift.com
Web address:	www.mechlift.com
Physical Address:	84 Mobile Road Airport Industria Cape Town 7490 South Africa
Postal Address:	84 Mobile Road Airport Industria Cape Town 7490 South Africa

Please Note:

Some assemblies may require more than one of the same unit, part or kit.

Mechlift (Pty) Ltd reserves the right to change prices and /or part numbers without notification.

Copyright ©

This publication, or parts thereof, may not be reproduced in any form, by any method, for any purpose, without prior written permission from Mechlift (Pty) Ltd.

Liability

Whilst every attempt has been made to assure the accuracy of this manual, Mechlift (Pty) Ltd cannot accept responsibility for any errors, which may occur. All information given is subject to change without notice

