

MECHlift ML325R & ML325RK Bin Lifter DEMOUNTABLE MODEL



Spare Parts Catalogue
- See page 2 for delivery arrangements -



Invoice values of R30,000 and above qualify for free delivery within the borders of South Africa. Delivery is by economy road freight only and may take several days.

NEEDING PARTS SOONER, PLEASE ARRANGE YOUR OWN COURIER
AT YOUR OWN COST.

CONTENTS:

IDENTIFYING the lifter, finding its Model and Serial Number

... ML 325R Bin Lifter Assembly – 240litre to 700litre bins.....	4
...ML 325RK Bin Lifter Assembly – 240litre to 1100litre bins.....	5

Lifter Sub Assembly QUICK REFERENCE GUIDE 6

... NOTES page.....	7
Fulcrum Arm and Hub Assemblies LH & RH.....	8
Coupling.....	10
H Frame.....	11
Comb Frame.....	12
Long Link Rod.....	13
Lower Link Frame.....	14
Swing Frame.....	15

Main Frame

Main Frame Assembly.....	16
Sill Seal Assembly.....	17
Slip pulley.....	18
Coupling Retainer.....	19
Anti Lowering Hook.....	20
Stopper Bar.....	21
Lid Opener.....	22
Lid Opener Control Mechanism.....	23
Bin Opener Pull Back Kit.....	24
Klaparms.....	25

Hydraulics

Hydraulic System.....	26
Actuator Service Parts.....	28

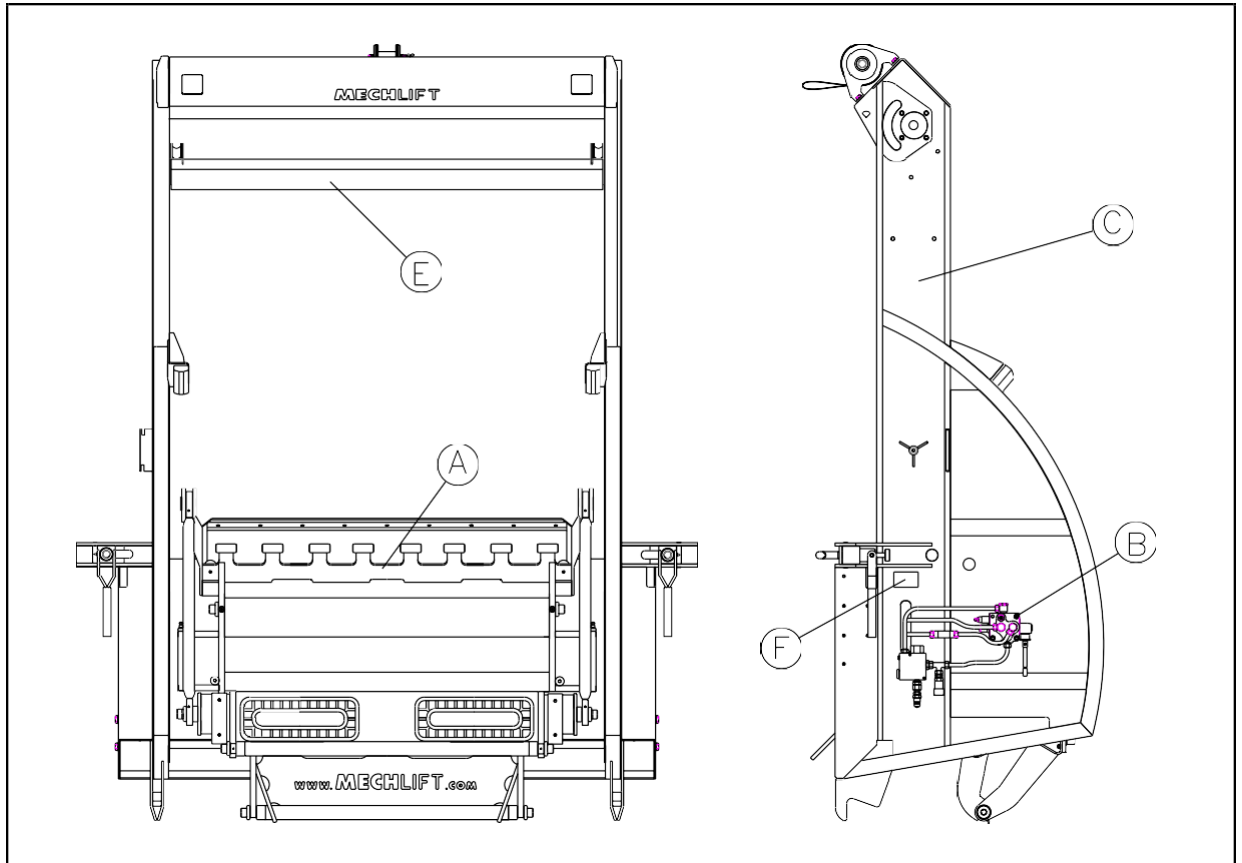
Note to Partsman:

- Always quote the Mechlif part numbers when ordering parts
- Part numbers ending in 1 usually refer to Left Hand Side parts
- Part numbers ending in 2 usually refer to Right Hand Side parts
- If in doubt, please feel free to contact Mechlif, we are always willing to assist

ML 325R BIN LIFTER ASSEMBLY

Part Number: 35 00 110 A

THE ML325R HAS A FIXED BIN STOPPER BAR FOR MAXIMUM 700litre TYPE BINS ONLY AND HAS NO FOLDING TRUNNION LIFTING ARMS (KLAPARMS)

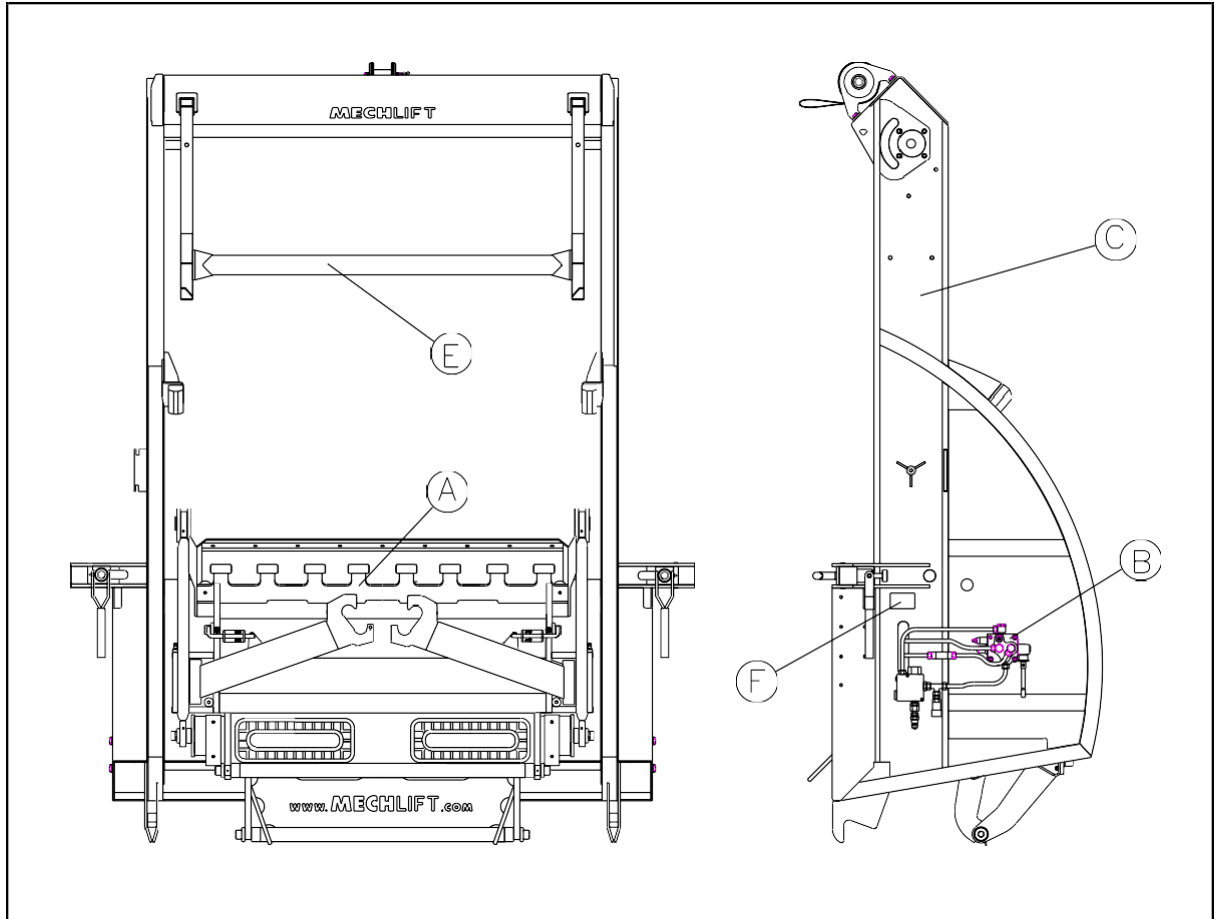


PART
A - LIFTER ASSEMBLY See page 6 for greater detail
B - HYDRAULIC SYSTEM
C - MAIN FRAME ASSEMBLY
E - STOPPER BAR for bins of 240lit, 360 lit, 660lit and 700 lit maximum
F - SERIAL AND MODEL NUMBERS are here. (lower left side of lifter)

ML 325RK BIN LIFTER ASSEMBLY

Part Number: 35 00 111 A

THE ML325K HAS A SPRUNG LID OPENER AND FOLDING LIFTING ARMS FOR 1100litre BINS ON SPIGOTS



PART

A - LIFTER ASSEMBLY See page 6 for greater detail

B - HYDRAULIC SYSTEM

C - MAIN FRAME ASSEMBLY

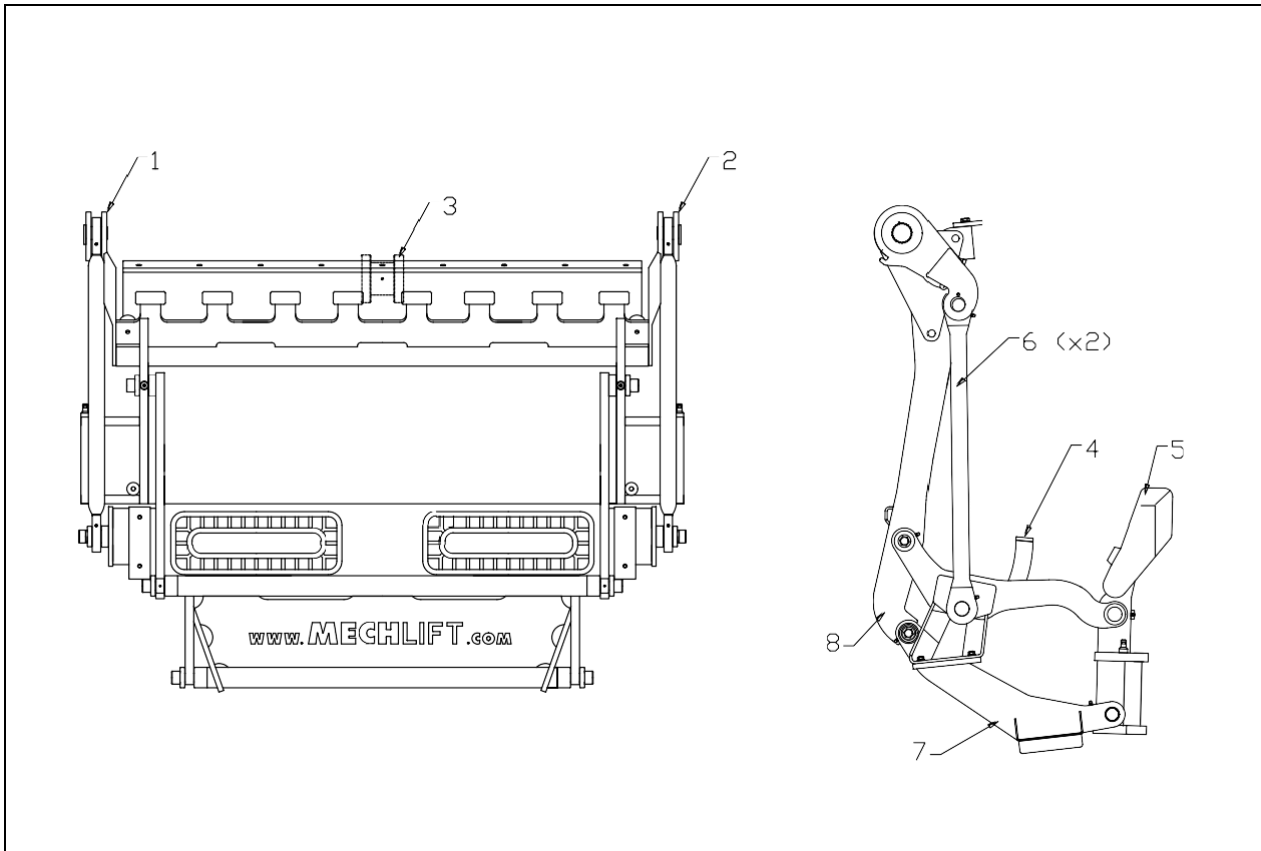
E - BIN CATCHER / LID OPENER for bins up to 1100litre on spigots.

*For 1100litre bins on comb lifts, BIN OPENER PULL BACK KIT must be fitted.
See elsewhere in this book*

F - SERIAL AND MODEL NUMBERS are here. (lower left side of lifter) OPTIONAL EXTRAS

LIFTER SUB ASSEMBLIES

QUICK REFERENCE

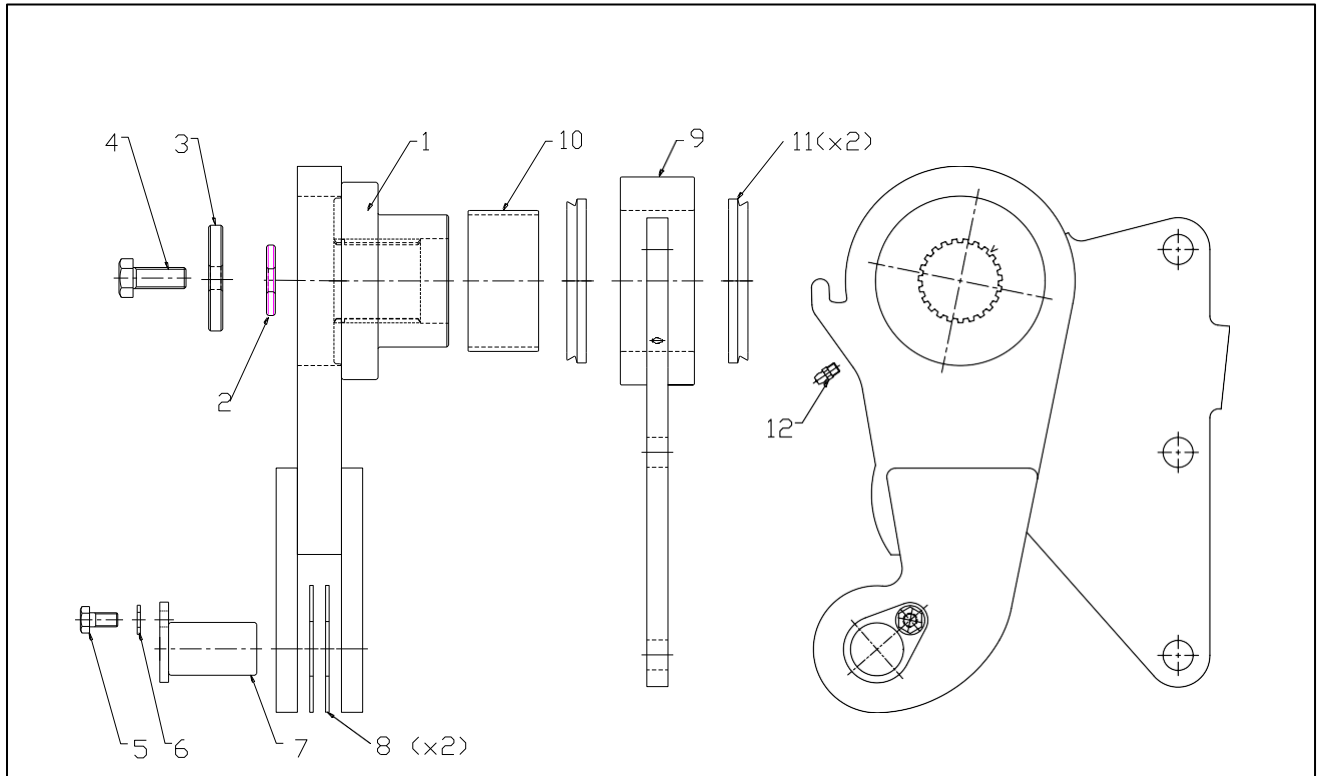


This page tells you what the above parts are called and on what page to find them.

No.	Part No.	Part
1	35 21 001 A	FULCRUM ARM AND HUB ASSEMBLY - LEFT HAND
2	35 21 002 A	FULCRUM ARM AND HUB ASSEMBLY - RIGHT HAND
3	35 23 100 A	COUPLING ASSEMBLY (between the two actuator shafts)
4	35 40 000 A	H-FRAME ASSEMBLY
5	35 50 010 A	COMB FRAME ASSEMBLY (STANDARD)
6	35 61 100 A	LONG LINK ROD ASSEMBLY
7	35 62 100 A	LOWER LINK FRAME ASSEMBLY
8	35 70 000 A	SWING FRAME ASSEMBLY

FULCRUM ARM AND HUB ASSEMBLY - LEFT HAND

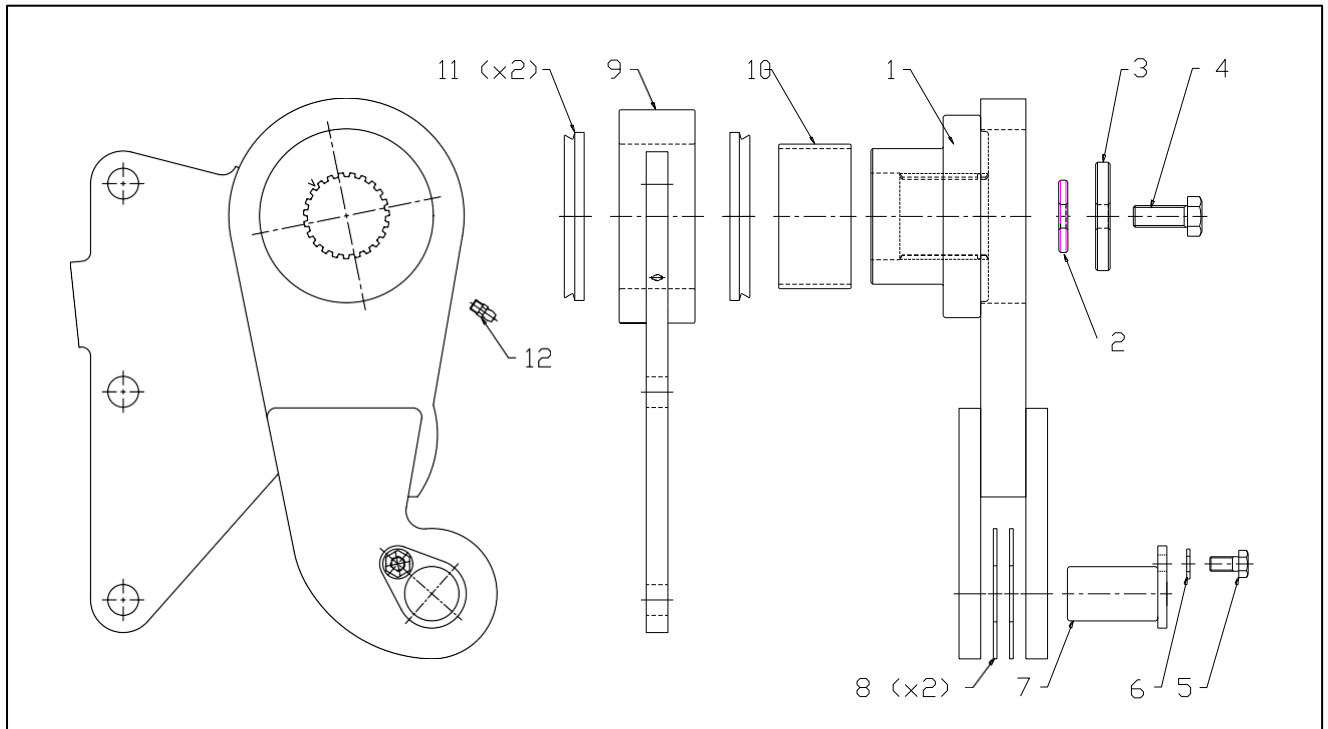
Part Number: 35 20 001 A



No.	Part No	Part	Qty per Lifter
	35 20 001 A	FULCRUM ARM & HUB ASSEMBLY LH (complete) Consists of all parts as shown	1
1	35 21 001 A	FULCRUM ARM ASSY LH (incl item no's 1 to 8)	1
9	35 22 100 A	SWING HUB PLATE ASSY (incl item no's 9 to 12)	2
kit	07 93 210 K	KIT – Fulcrum arm service (incl item no's 2 to 8)	2
kit	07 93 220.K	KIT – Swing hub service (incl item no's 10 to 12)	2

FULCRUM ARM AND HUB ASSEMBLY - *RIGHT HAND*

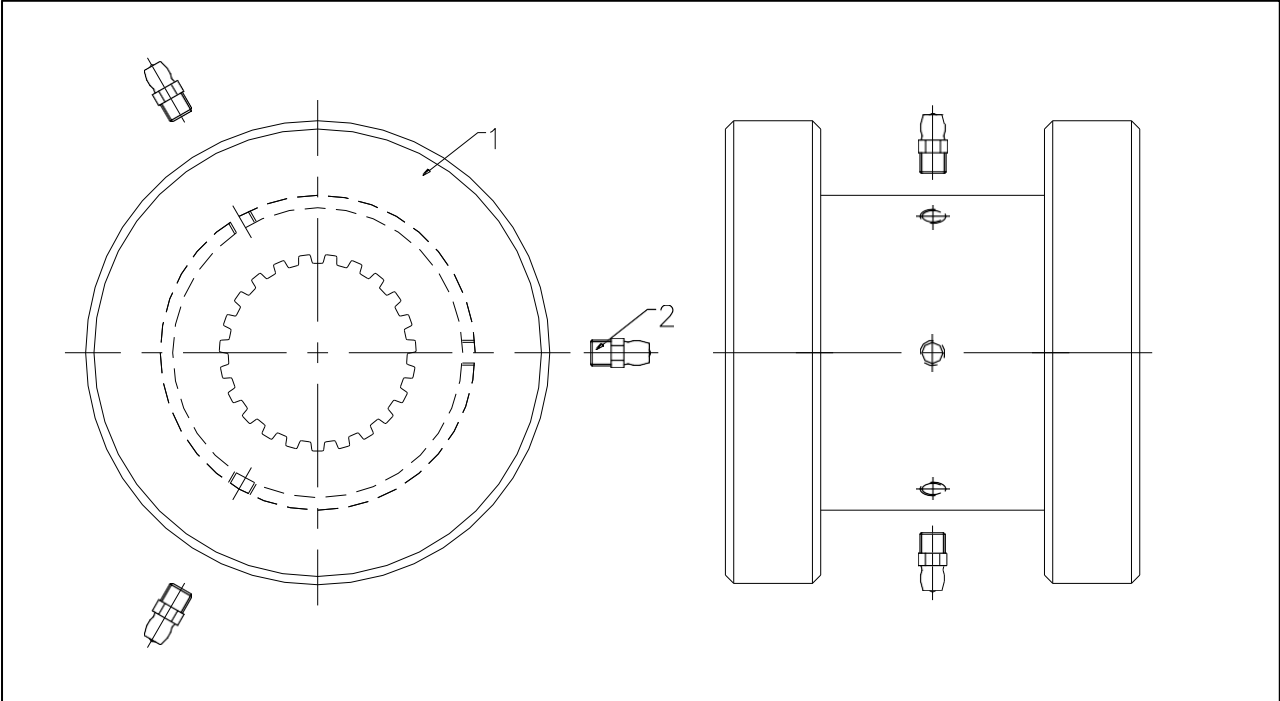
Part Number: 35 20 002 A



No.	Part No.	Part	Qty per Lifter
	35 20 002A	FULCRUM ARM & HUB ASSEMBLY RH (complete) Consists of all parts as shown	1
1	35 21 002 A	FULCRUM ARM ASSY RH (incl item no's 1 to 8)	1
9	35 22 100 A	SWING HUB PLATE ASSY (incl item no's 9 to 12)	2
kit	07 93 210 K	KIT – Fulcrum arm service (incl item no's 2 to 8)	2
kit	07 93 220.K	KIT – Swing hub service (incl item no's 10 to 12)	2

COUPLING ASSEMBLY

Part Number: 35 23 100 A

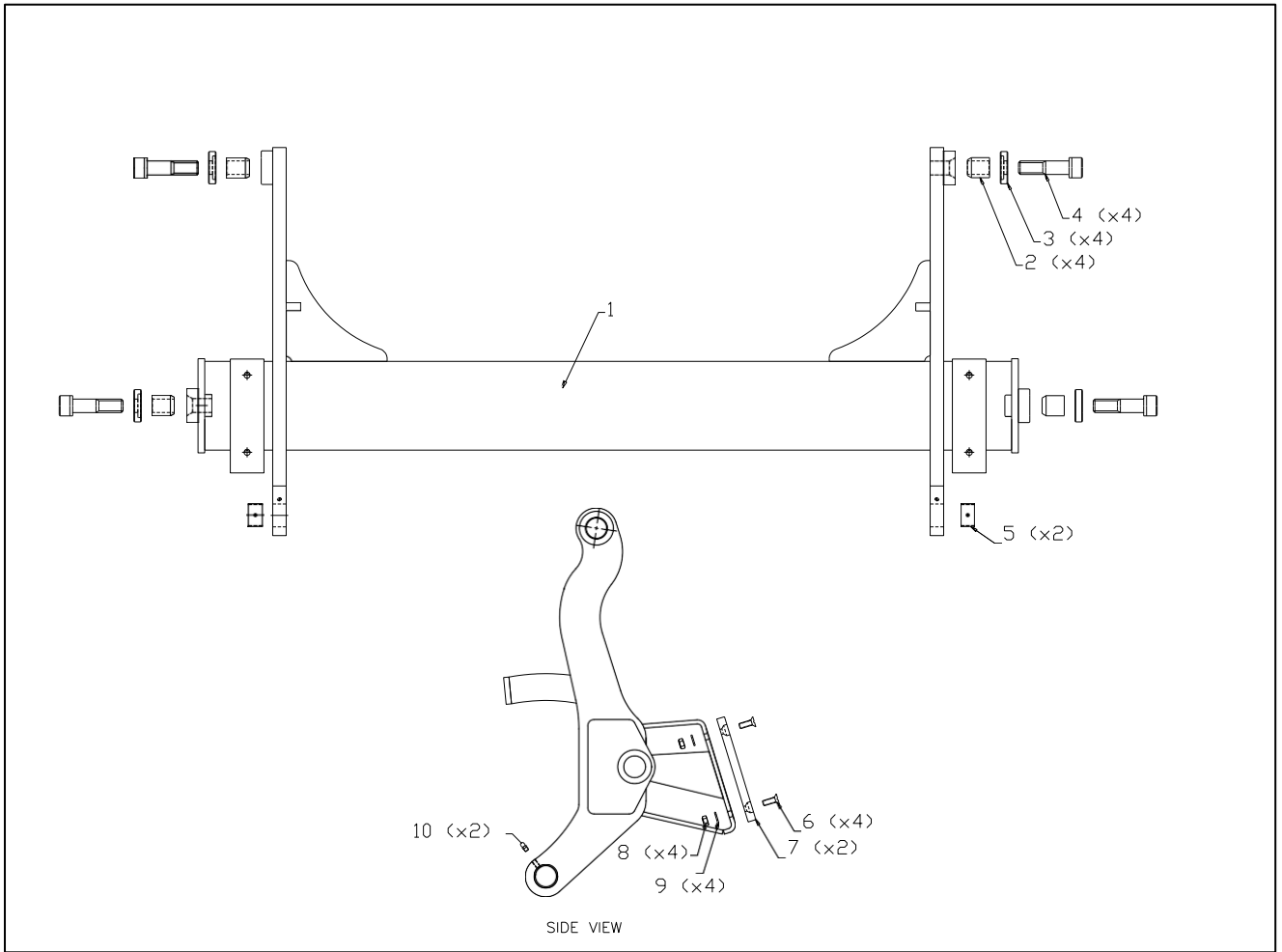


No.	Part No.	Part	Qty per Lifter
	35 23100 A	COUPLING ASSEMBLY LH (complete)	1
1	(*NSS)	Coupling weldment	1
2	MGN 06	Grease nipple	3

* Not Sold Separately

H-FRAME ASSEMBLY

Part Number: 35 40 000 A

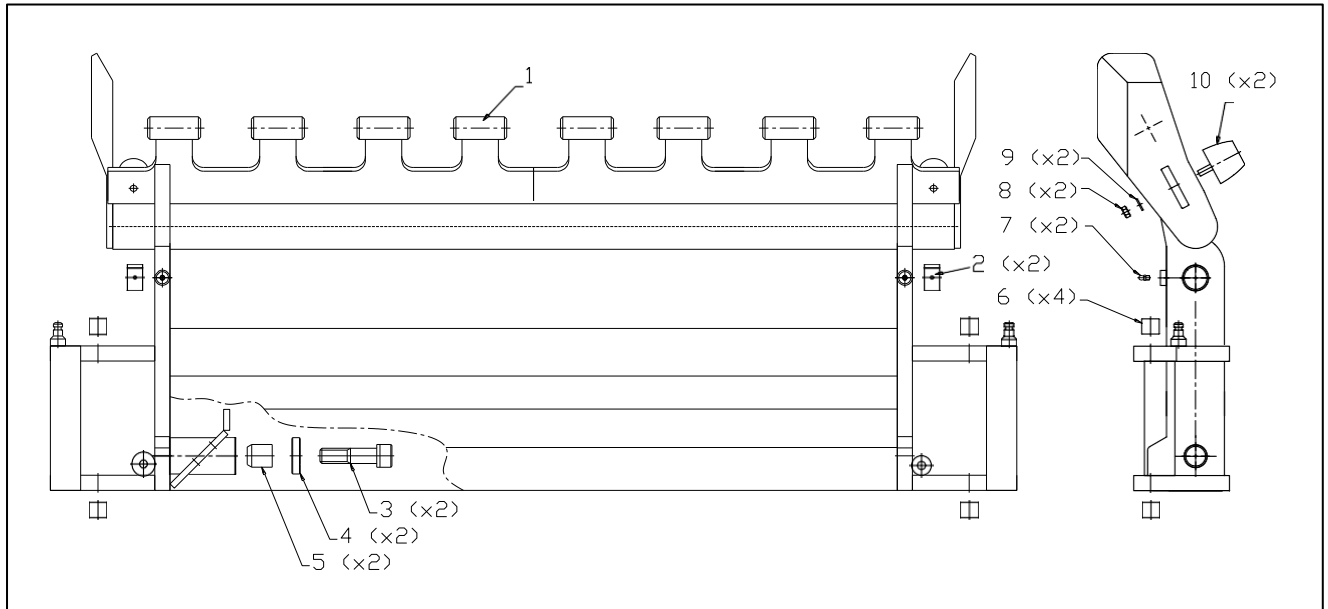


No.	Part No.	Part	Qty per Lifter
	35 40 000 A	H-FRAME ASSEMBLY (complete with all parts shown)	
1	(* NSS)	H-FRAME WELDMENT	1
kit	07 90 115 K	JOINT SERVICE KIT (incl item no's 2 to 5 and 10)	4
kit	07 93 410 K	KIT – Plastic pad (incl. Item no's 6 - 9)	2
5	BPAP 3020 P20	PERMAGLIDE BUSH	2

* Not Sold Separately

COMB FRAME ASSEMBLY

Part Number: 35 50 010 A

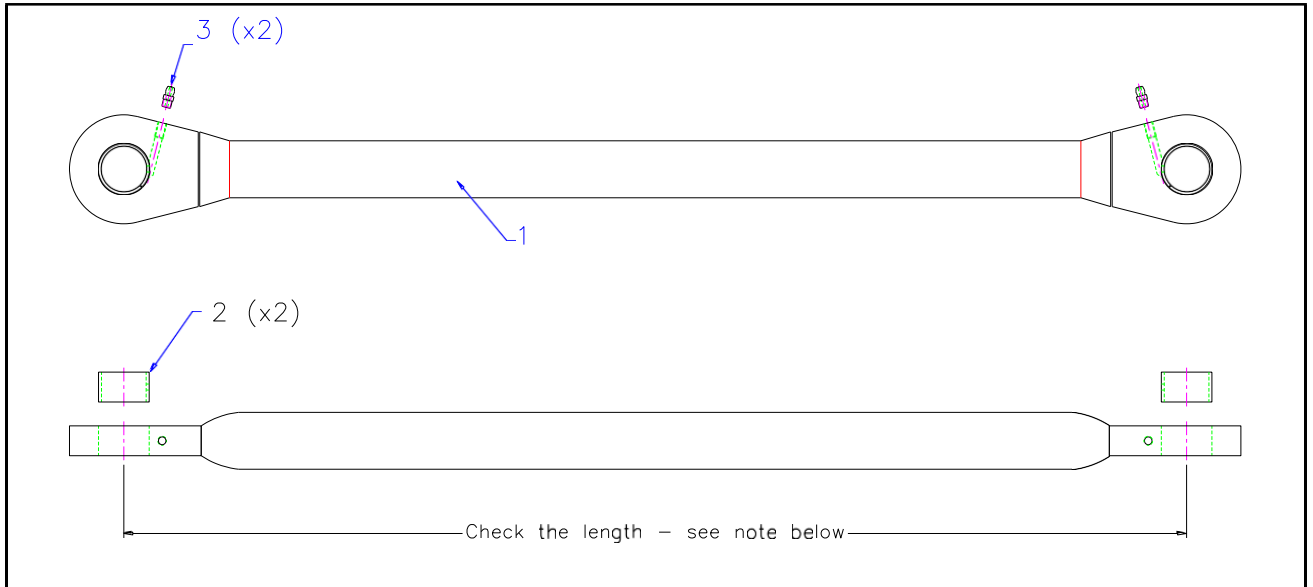


No.	Part No.	Part	Qty per Lifter
	35 50 010 A	COMB FRAME ASSEMBLY (complete – no klaparms)	1
1	(* NSS)	COMB FRAME WELDMENT	1
10	05 10 132 K	KIT – Conical bump rubber (Incl. item no's 8 to 10)	2
kit	07 90 115 K	JOINT SERVICE KIT (Incl item no's 2 to 5) <i>Refer to Klaparm section for its 20mm bushes</i>	2
6	BPAP 3020 P20	PERMAGLIDE BUSH	2

* Not Sold Separately

LONG LINK ROD ASSEMBLY

Part Number: 35 61 100 A



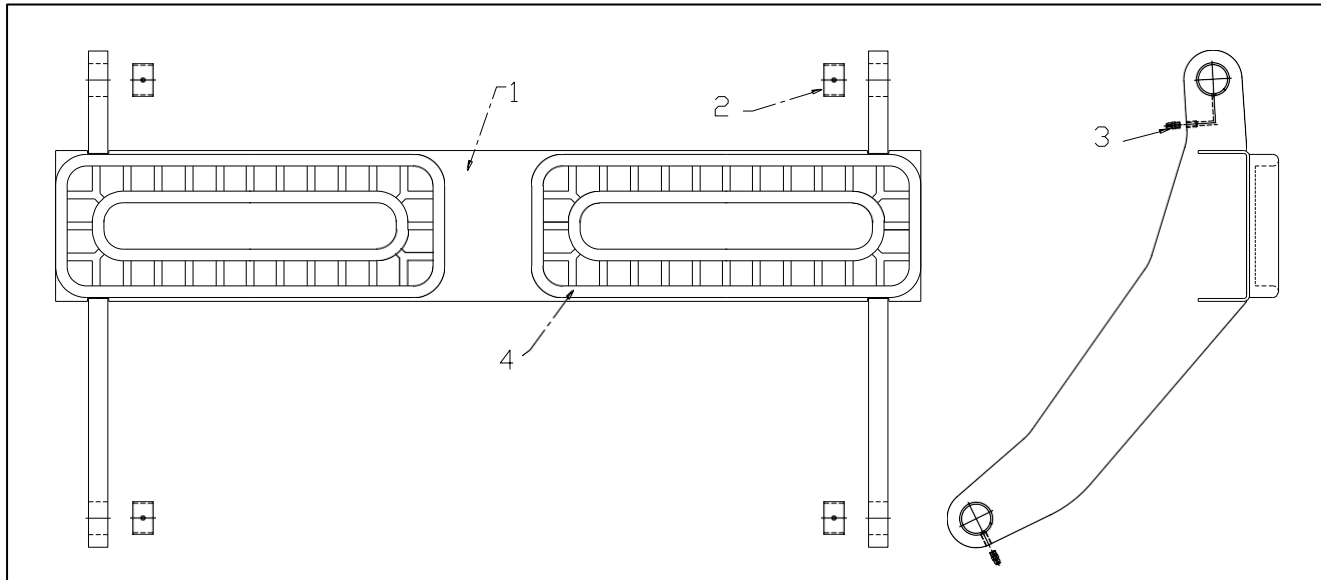
No.	Part No.	Part	Qty per Lifter
	35 61 100 A	LONG LINK ROD ASSEMBLY (complete)	2
1	(* NSS)	LONG LINK ROD WELDMENT	2
2	BPAP 3020 P20	PERMAGLIDE BUSH	4
3	MGN 08	GREASE NIPPLE M8	4

* Not Sold Separately

NOTE: The length of this link rod was revised late in 2006. Please call us at 021 386 0404 to determine the correct replacement parts.

LOWER LINK FRAME ASSEMBLY

Part Number 35 62 100 A

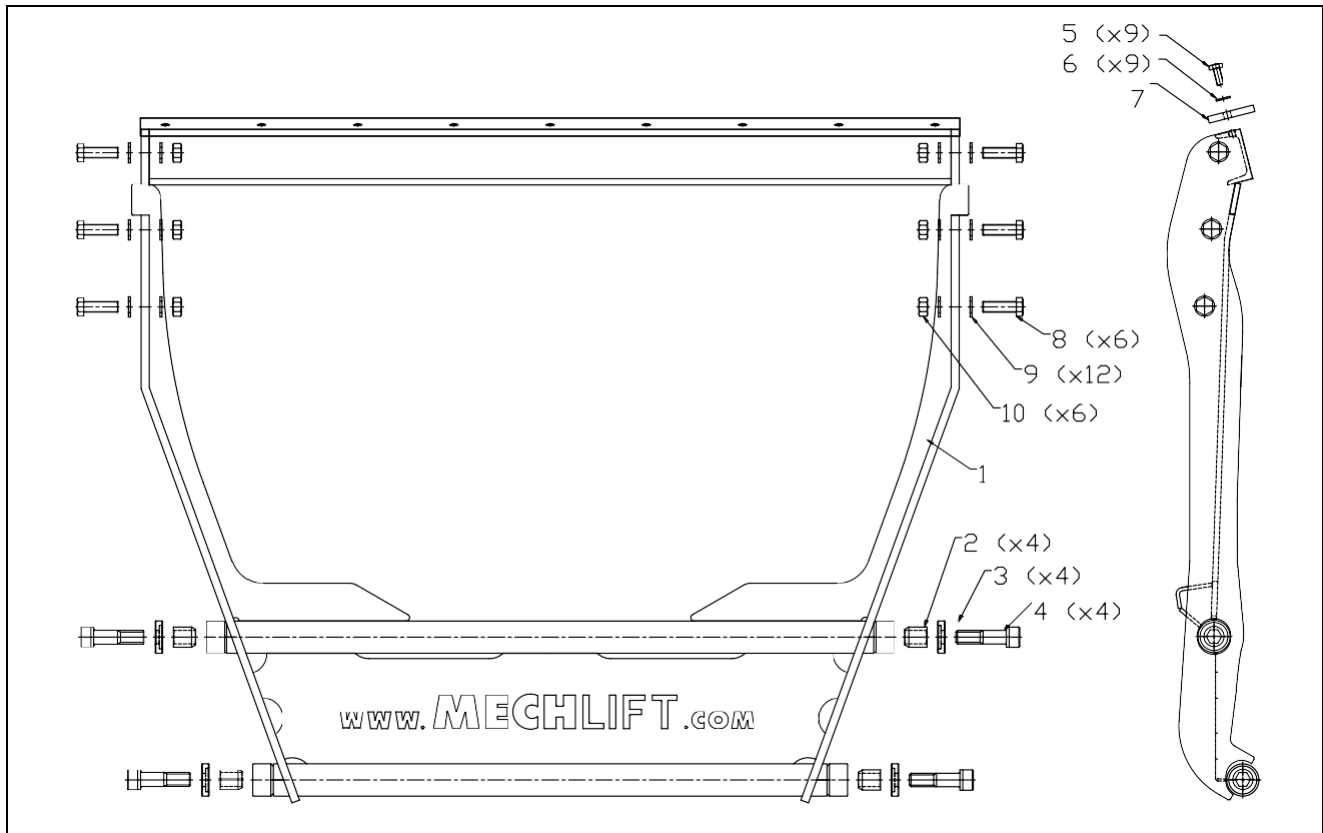


No.	Part	Part	Qty per Lifter
	35 62 100 A	LOWER LINK FRAME ASSEMBLY (complete)	1
1	(* NSS)	LOWER LINK FRAME WELDMENT	1
2	BPAP 3020 P20	PERMAGLIDE BUSH	4
3	MGN 08	GREASE NIPPLE M8	4
4	05.20.105R	RUBBER (Glued on)	2

* Not Sold Separately

SWING FRAME

Part Number: 35 70 000 A

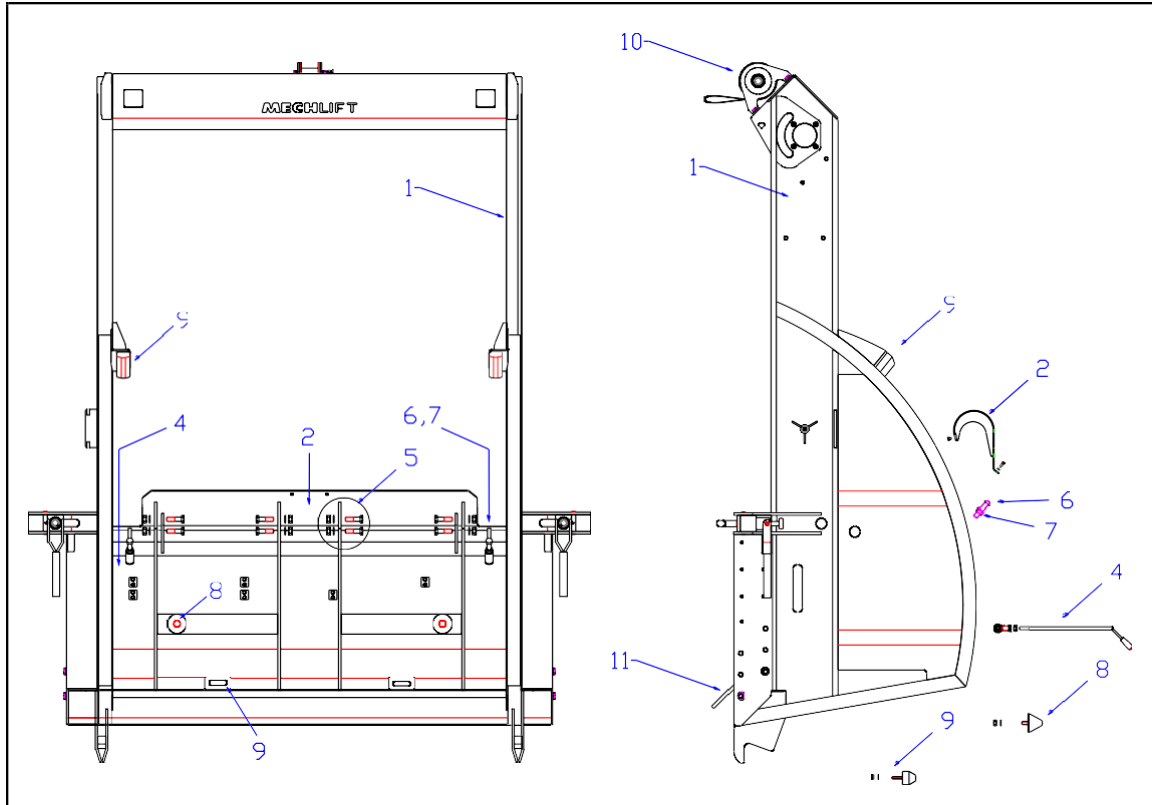


No.	Part No	Part	Qty per Lifter
	35 70 000 A	SWING FRAME ASSEMBLY (complete)	1
1	(*NSS)	SWING FRAME WELDMENT	1
KIT	07 90 115 K	JOINT SERVICE KIT (incl item no's 2 to 4 & 30mm bush)	4
KIT	07 90 116 K	Bolt and Nut (50mm x 6off)	1

* Not Sold Separately

MAIN FRAME ASSEMBLY

Part Number: 35 90 005 A

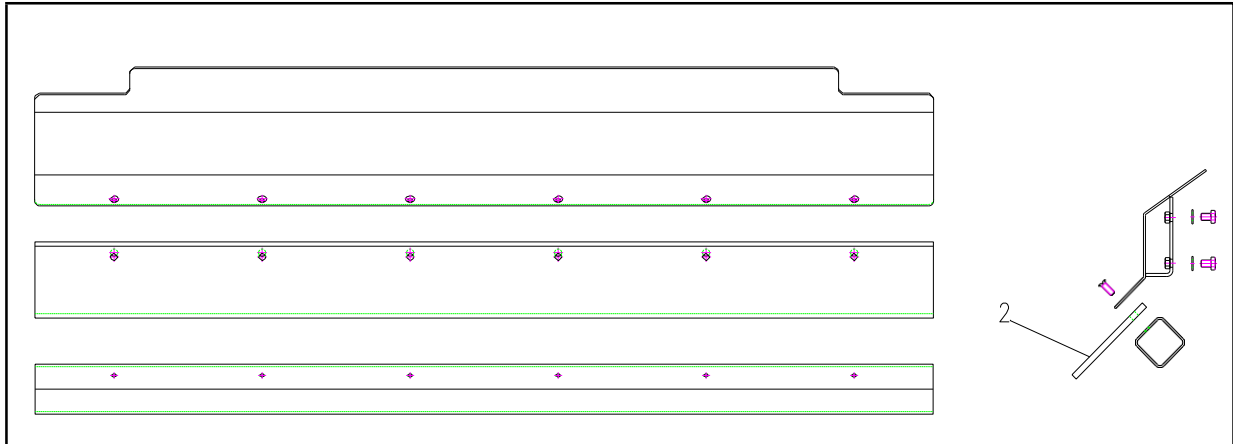


Enquire about J-Bolt Part No 22 91 078 E

No.	Part No.	Part	Qty per Frame
1	35 90 005 A	FRAME ASSEMBLY (incl all items listed below) Also includes Sill Seal Assembly below	1
2	35 23 200 A	COUPLING RETAINER ASSEMBLY	1
4	35 90 120 A	ANTI LOWERING HOOK ASSEMBLY	1
5	07 90 117 K	KIT – actuator fasteners	2
6	FB 1665 H8ZP (*NSS)	STOP BOLT M16 x 65mm	2
7	FN 16 ZP	NUT	2
8	05 10 124 R	RUBBER BUFFER CONICAL 55mm (M12x24)	2
9	05 10 319 R	RUBBER BUFFER RECTANGULAR 100x50 (M8)	4
10	22 05 000 A	SLIP PULLEY ASSEMBLY	1
11	22 91 080 A	SILL SEAL ASSEMBLY	1

SILL SEAL ASSEMBLY

Part Number: 22 91 080 A

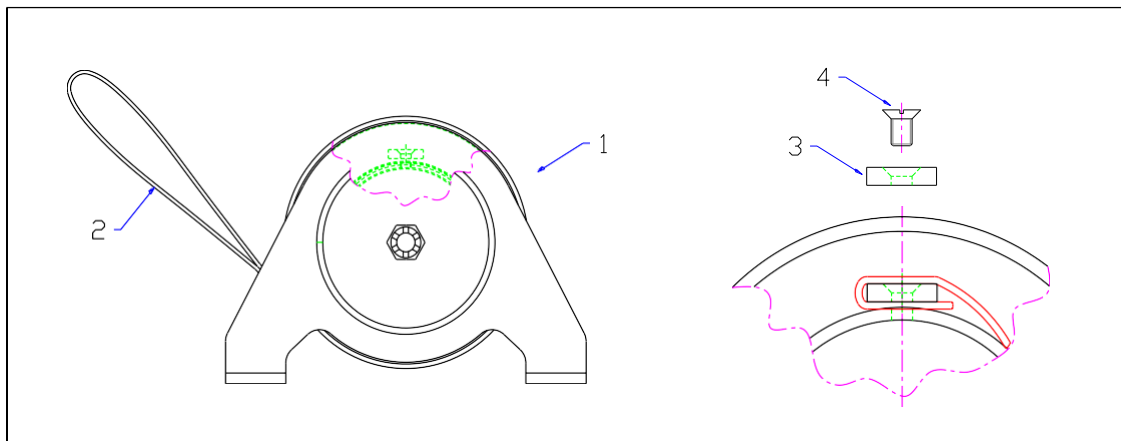


Item	Part No.	Part	Qty per Frame
1	22 91 080 A	SILL SEAL ASSEMBLY (complete)	1
2	22 91 089 D	RUBBER - PUNCHED (only)	1

SLIP PULLEY ASSEMBLY

22 05 000 A

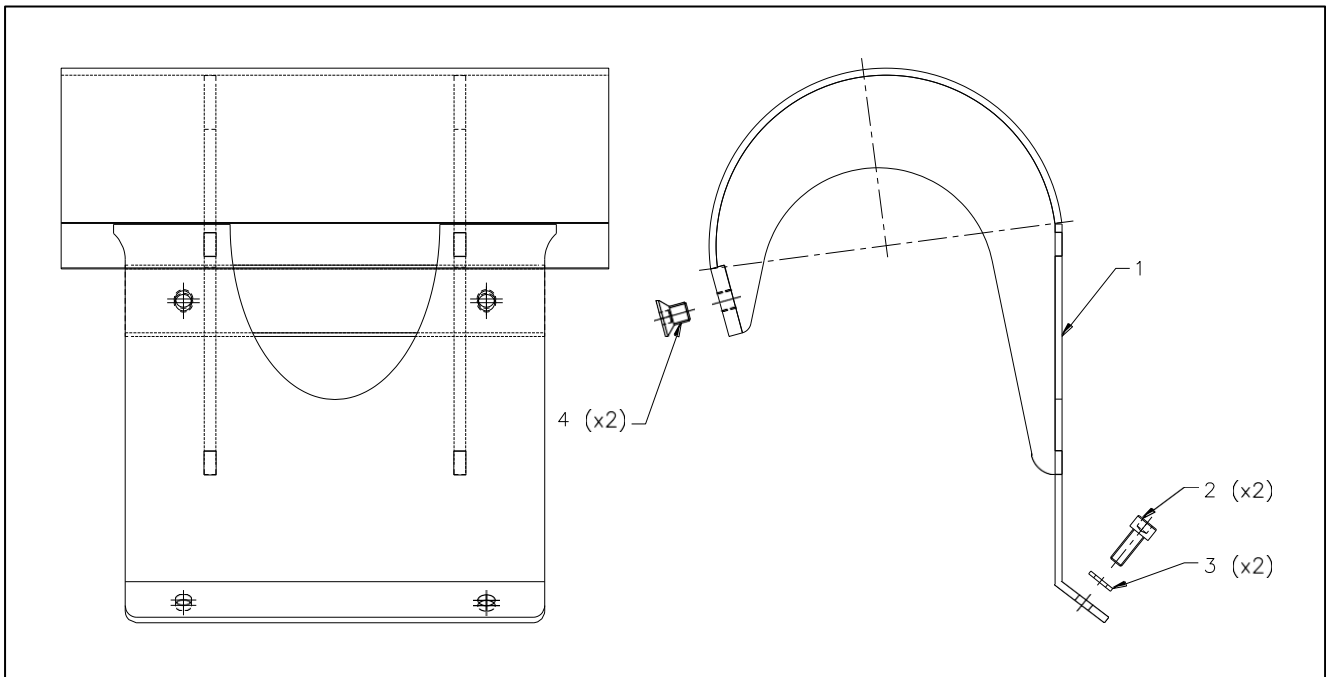
The slip pulley is a **non-service** item. Its slip torque has been preset at the factory.



No.	Part No.	Part	Qty per Frame
1	22 05 000 A	SLIP PULLEY ASSEMBLY (incl. item no's 2 to 4)	1
2	22 05 017 X	STRAP	1
3	22 05 016 D	LOCK PLATE	1
4	FSCSK 0610 ZP	CAPSCREW Countersunk M6 x 10 Zinc Plated	2

COUPLING RETAINER ASSEMBLY

Part Number: 35 23 200 A

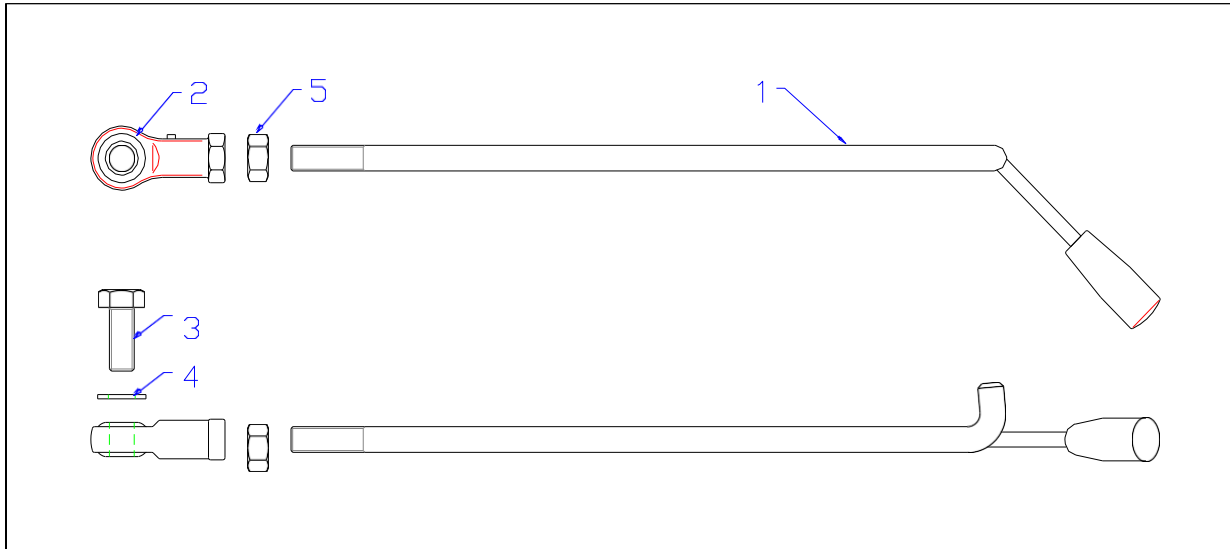


No.	Part No.	Part	Qty per Frame
	35 23 200 A	COUPLING RETAINING ASSEMBLY (complete as shown)	1
1	*NSS	COUPLING RETAINER WELDMENT	1
2	FS 0616 AB	SCREW ALLEN CAP M6 x16 (BLACK)	2
3	FW 08	WASHER M8	2
4	FSCSK 0812 AB	SCREW CSK CAP SCREW M8 x12 (BLACK)	2

* Not Sold Separately

ANTI LOWERING HOOK ASSEMBLY

Part Number: 35 90 120 A



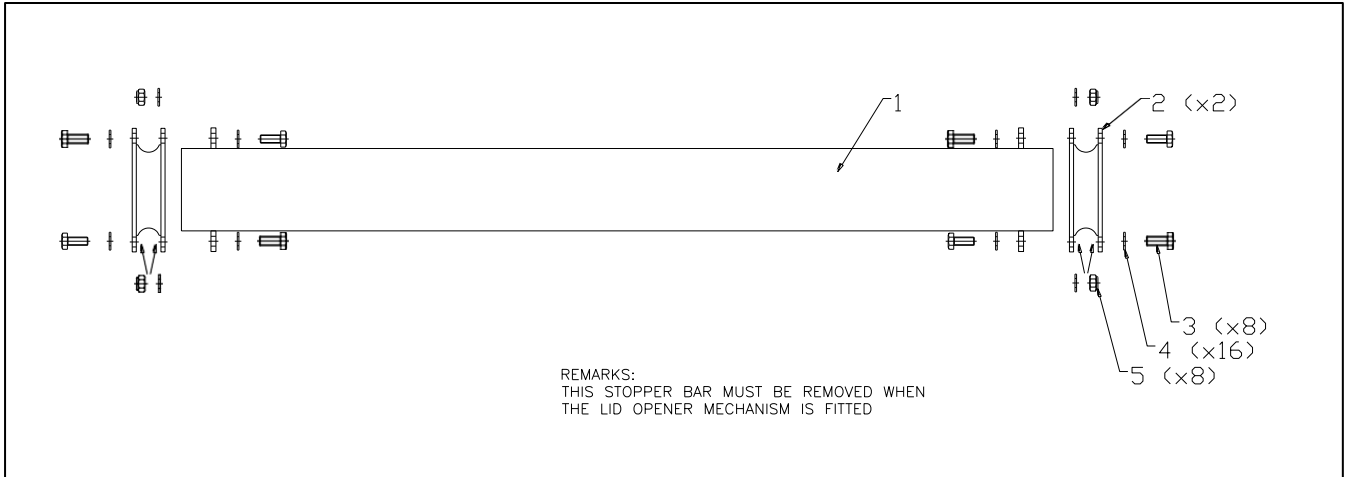
No.	Part No.	Part	Qty per Frame
	35 90 120 A	ANTI LOWERING HOOK ASSEMBLY (complete)	1
1	35 90 120 W	HOOK WELDMENT	1
2	BPHS12R	ROD END	1
3	FS 12x30 H8 ZP	SCREW M12 x 30mm	1
4	FW 12	WASHER M12	1
5	35 90 124 D	BLOCK (THREADED) (NOT SHOWN)	1

* Not Sold Separate

STOPPER BAR ASSEMBLY

Part Number: 35 92 100 A

USED ON Model ML325R ONLY



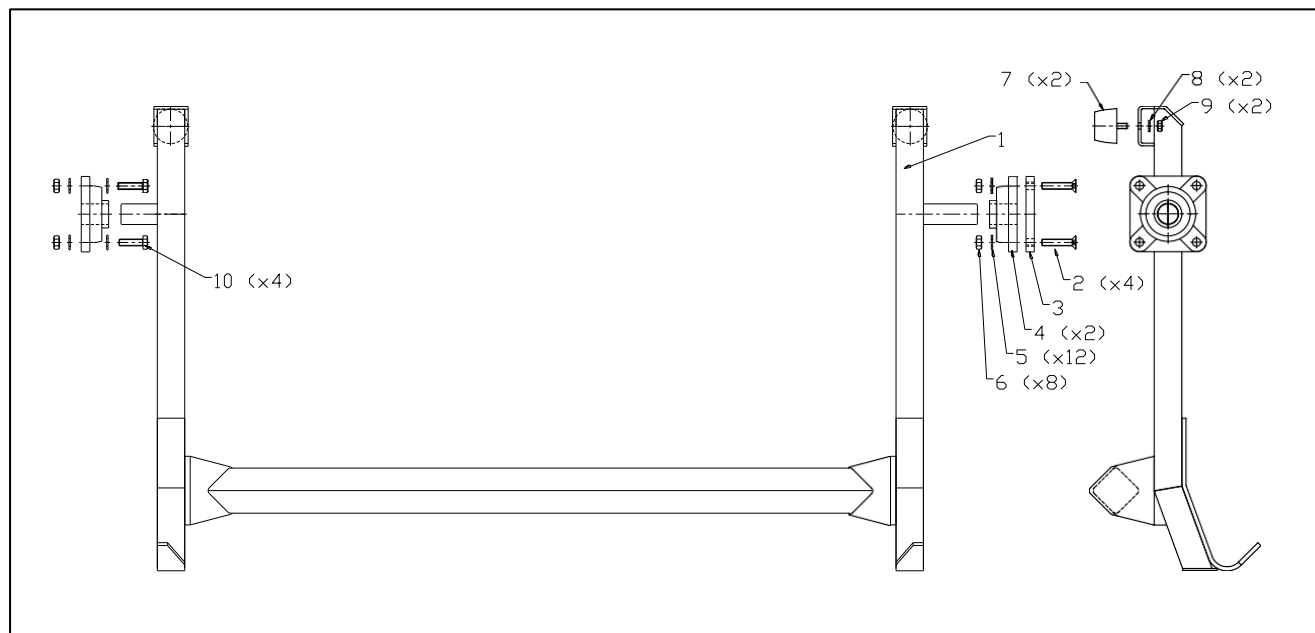
No.	Part No.	Part	Qty per Frame
	35 92 100 A	STOPPER BAR ASSEMBLY (complete)	1
1	(* NSS)	STOPPER BAR WELDMENT	1
2	35 92 110 R	RUBBER	2
3	FS1025H8ZP (* NSS)	SCREW M10x25	8
4	FW 10 (* NSS)	WASHER M10	16
5	FN10 NL (* NSS)	NUT NYLOC M10	8

* Not Sold Separately

LID OPENER ASSEMBLY

Part Number: 35 93 001 A

USED ON Model ML325K & ML325RK ONLY



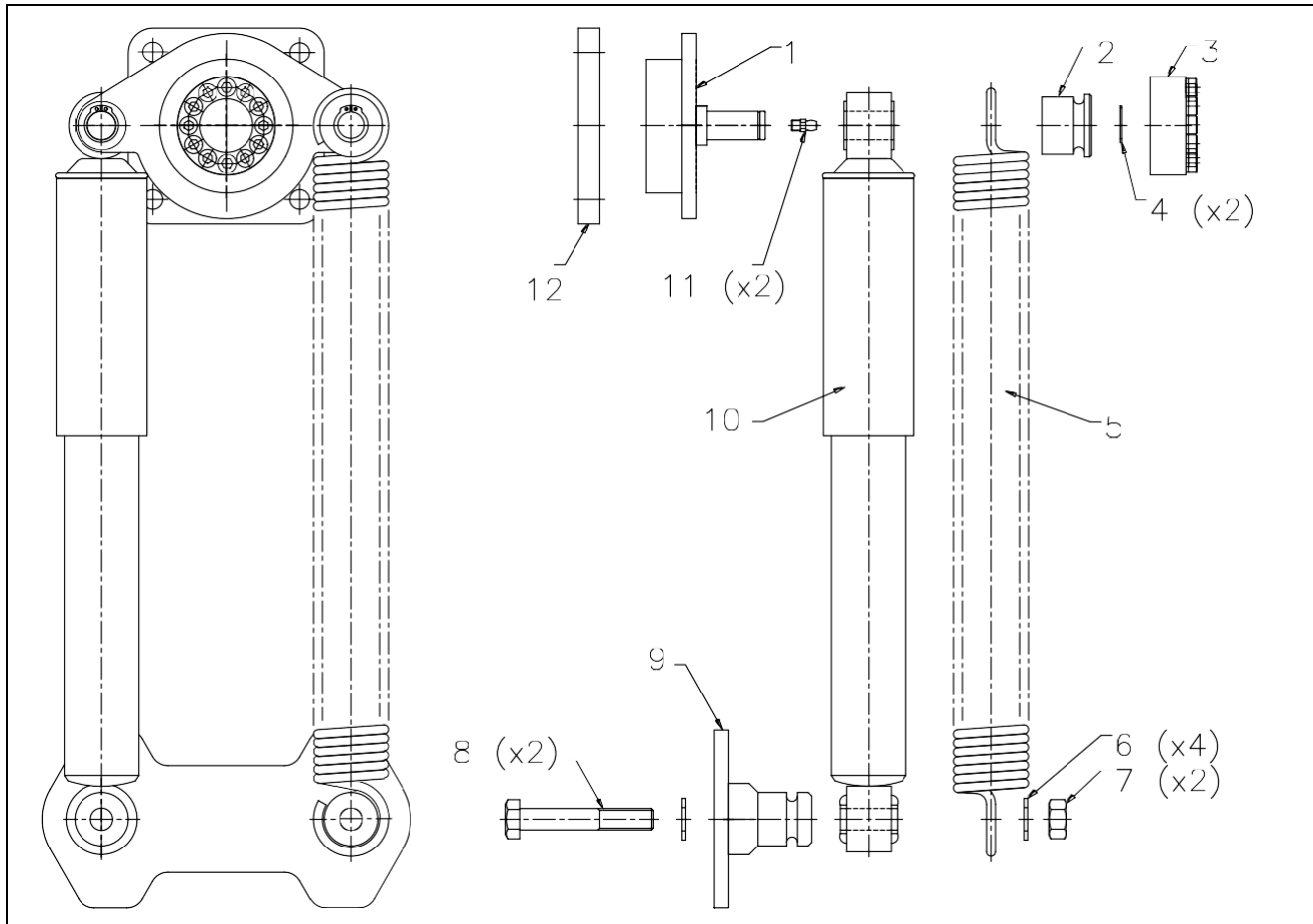
No.	Part No.	Part	Qty per Frame
	35 93 001 A	LID OPENER FRAME ASSY – Complete as shown (Excluded is its Control Mechanism)	1
1	35 93 100 W	LID OPENER FRAME WELDMENT	1
2	FSCSK 1050 AB (* NSS)	SCREW CSK CAPSCREW M10 x50	4
3	35 93 205 P	BEARING SPACER	1
4	BUCF 206	FLANGE MOUNT BEARING	2
5	FW 10 (* NSS)	WASHER M10	6
6	FN 10 ZP (* NSS)	NUT M10	8
7	05 10 232 K	KIT – Rubber buffer	2
10	FS 1035 H8ZP (* NSS)	SCREW M10 x35	4

* Not Sold Separately

Lid Opener CONTROL MECHANISM

Part Number: 35 93 200 A

USED ON Model ML325K & ML325RK ONLY



No.	Part No.	Part	Qty per Frame
	35 93 200 A	LID OPENER CONTROL MECHANISM – COMPLETE	1
1	35 93 210 W	BELLCRANK WELDMENT	1
2	06 40 021 T	BUSH	1
3	FCONEX 30	QUANTUM 30 30x55	1
4	FC 16 E	CIRCLIP DIAMETER 16mm EXTERNAL	1
5	04 10 006 E	SPRING – PLATED	1
6	FW 12 (*NSS)	WASHER M12	1
7	FN 12 NL (*NSS)	NUT NYLOC M12	1
8	FB 1275 H8ZP (*NSS)	BOLT M12 x75	1
9	35 93 220 W	MOUNTING PLATE WELDMENT	1
10	35 93 230 D	DAMPER	1
11	MGN 06 (*NSS)	GREASE NIPPLE M6	1
12	35 93 205 P	BEARING SPACER	1

* Not Sold Separately

BIN OPENER PULL BACK KIT

Part Number: To be advised

Required for 1100litre bins with flat lids on a comb pick up. For these the sprung lid opener must be pulled back, hence this kit.

Consists of a handle, cable and bracketing

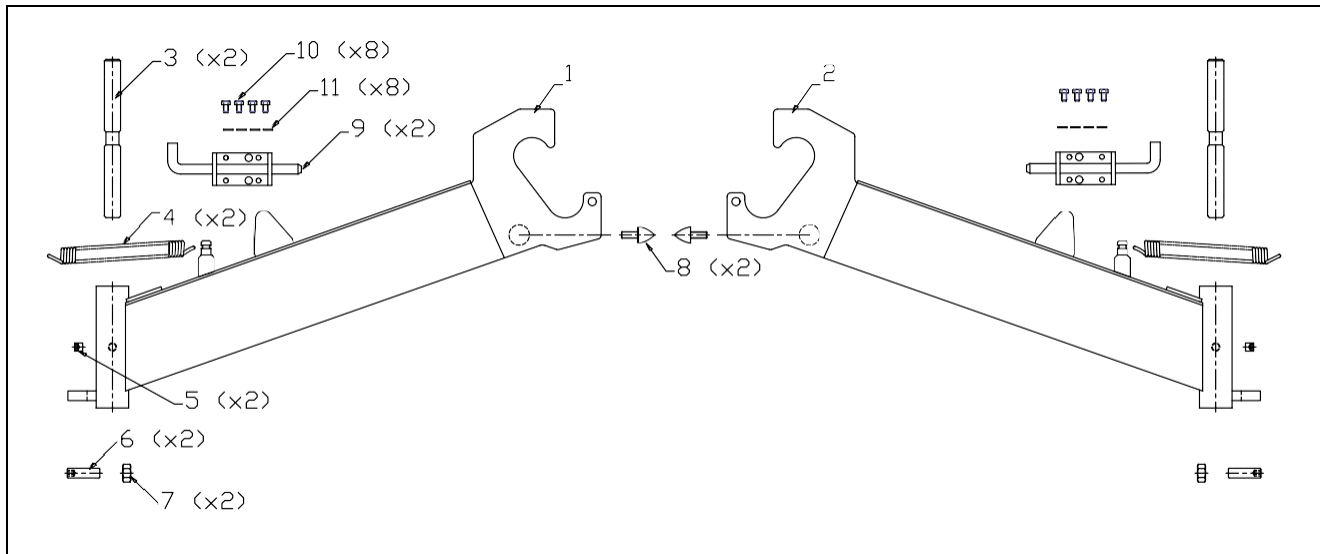
No diagram yet - details available from Mechlifit

No.	Part No.	Part	Qty
1	35 93 140 W	HANDLE	1
2	35 90 103 X	Wire Rope 4mm Stainless Steel	1
3	35 90 104 X	Cable clamps 4mm	1
4	35 90 106 X	Thimble 5mm Stainless steel	1
5	35 90 107 X	Shackle 8mm Galv 'D	1

*Price on application

KLAPARM KIT

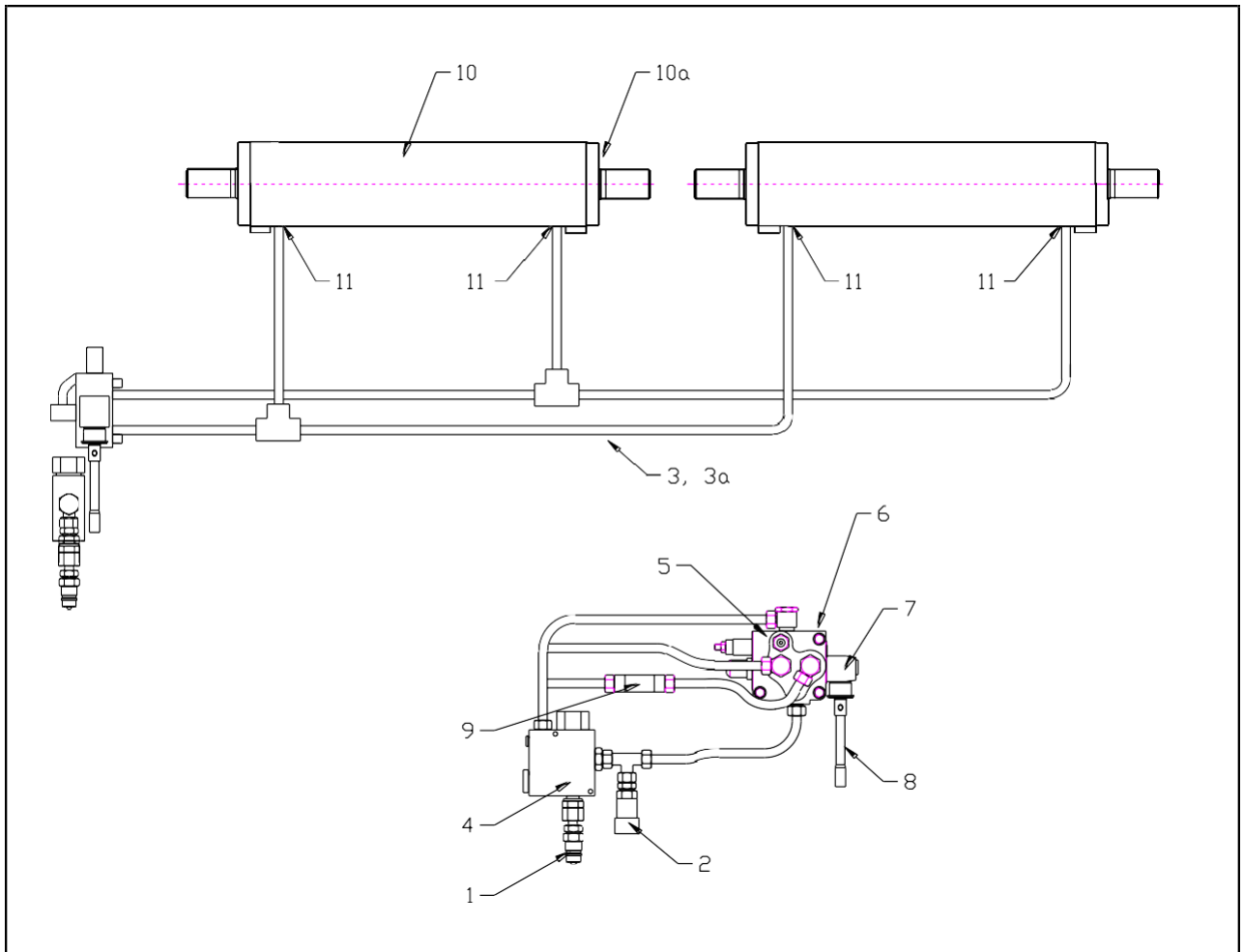
Part Number: 35 90 003 A



No.	Part No.	Part	Qty per Lifter
	35 90 003 A	KLAPARM KIT Complete excl Sliding Bolts	1
1	35 53 101 W	BIN CARRIER ARM – LH	1
2	35 53 102 W	BIN CARRIER ARM – RH	1
3	31 53 010 T	KLAPARM HINGE PIN	2
4	04 10 003 E	SPRING – KLAPARMS	2
5	FSG 1012 ZP (*NSS)	SCREW GRUB M10 x 12	2
6	FSG 1240 ZP (*NSS)	SCREW GRUB M12 x 40	2
7	FN 12 ZP (*NSS)	NUT M12	2
8	MCR 205	RUBBER BUFFER RPM 205	2
9	MSB164	SLIDING BOLT – Spring loaded	2
10	FS 0610 ZP (*NSS)	SCREW M6 x 10	8
11	FW 06 (*NSS)	WASHER Ø6	8

* Not Sold Separately

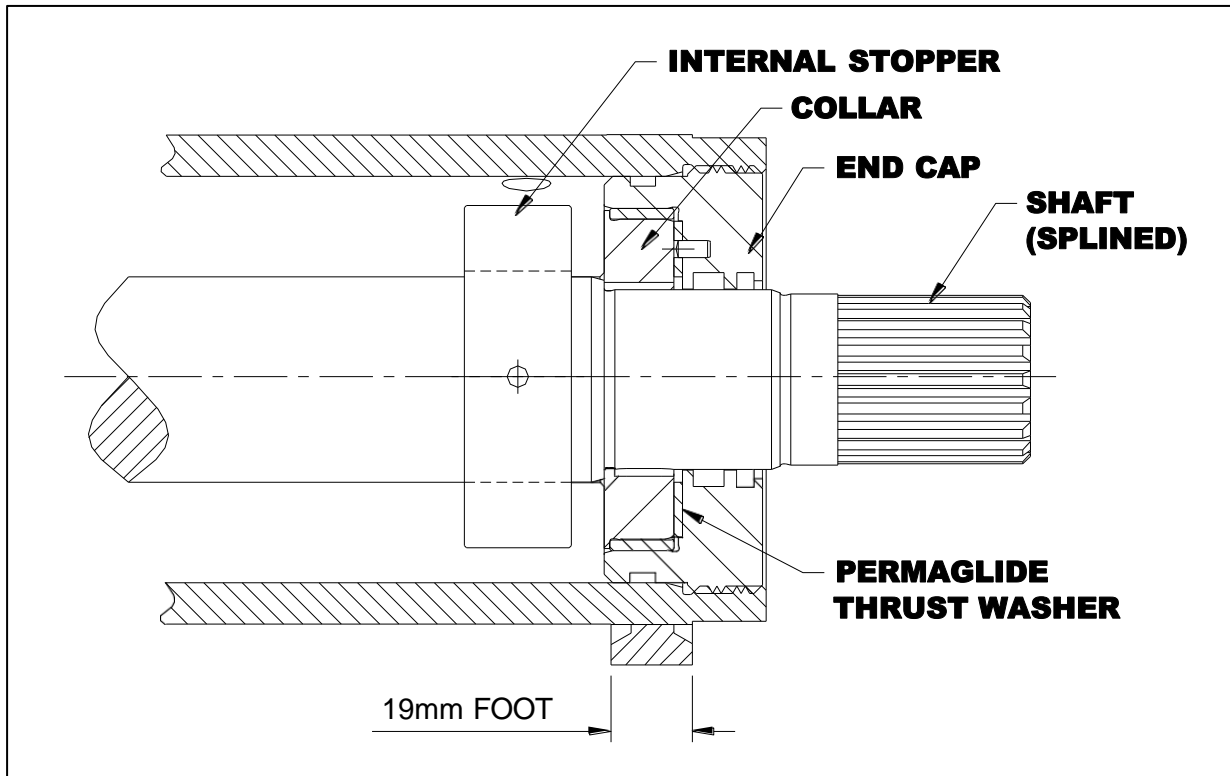
HYDRAULIC SYSTEM



HYDRAULIC SYSTEM Continued

No.	Part No.	Part	Qty per Lifter
1	HCM12 5.ISO	MALE QUICK COUPLER ½ "	1
2	HCF12 5.ISO	FEMALE QUICK COUPLER ½ "	1
3	35 10 001 E	HYDRAULIC PIPE SET	1
3a	35 10 001 SP	INDIVIDUAL PIPE (NON PLATED)	1
4	HV.FLO.REG 50	FLOW REGULATOR	1
5	HMINI3.8	MINITEST COUPLING – 3/8" BSP -ED	1
6	HV.VCD20.LH	CONTROL VALVE LH (Includes Lever Box but excludes Fittings & Handle)	1
7	HV.VCD.BOX	LEVER BOX ASSEMBLY (shaped square)	1
7b	HV.VCD.CAP	END CAP ASSY (shaped round & spring side)	1
8	01 40 010 R	VALVE HANDLE	1
9	HV.FLO.REST.35	FLOW RESTRICTOR (Drilled 3.5mm)	1
10	08 10 141 X	ACTUATOR	2
10a		SEAL KIT	1
11	03 70 001 T	SPECIAL FITTING – Actuator Port	2

ACTUATOR SERVICE PARTS



Part No.	Part	Qty per Actuator
08 10 141 X	ACTUATOR	1
A SKH22 000	SEAL & BRG KIT – For full overhaul (Genuine OEM) (includes stopper, thrust washers and seals)	1
A SKH22 300	SEAL KIT – End cap side only (Genuine OEM) (includes wiper, seal, o’ring, backup ring)	2
06 10 241 T	ACTUATOR INTERNAL STOPPER (use only genuine OEM part)	1
BPAW 62 P10	THRUST WASHER	2
--	SHAFT	1
--	COLLAR (only sold as part of End Cap)	2
08 10 144 X EC	END CAP Complete with collar, seals, thrust washer	2

NB: Observe internal timing marks BEFORE pulling piston and shaft from barrel

Contact information:

Please feel free to contact us should you have any queries or need any further information:

Telephone: +27 (0) 21 386 0404

Fax: +27 (0) 21 385 1886

E-mail:

... General enquiries query@mechlift.com
... **Sales enquiries** sales@mechlift.com

Web address: www.mechlift.com

Physical Address: 84 Mobile Road Airport Industria Cape Town 7490
South Africa

Postal Address: 84 Mobile Road Airport Industria Cape Town 7490
South Africa

Please Note:

Some assemblies may require more than one of the same unit, part or kit. Mechlift (Pty) Ltd reserves the right to change prices and /or part numbers without notification. (based on Euro/Pound rate 20:23)

Copyright ©

This publication, or parts thereof, may not be reproduced in any form, by any method, for any purpose, without prior written permission from Mechlift (Pty) Ltd.

Liability

Whilst every attempt has been made to assure the accuracy of this manual, Mechlift (Pty) Ltd cannot accept responsibility for any errors, which may occur.
All information given is subject to change without notice.

