

# MECHlift ML150 Bin Lifter



## Spare Parts Catalogue

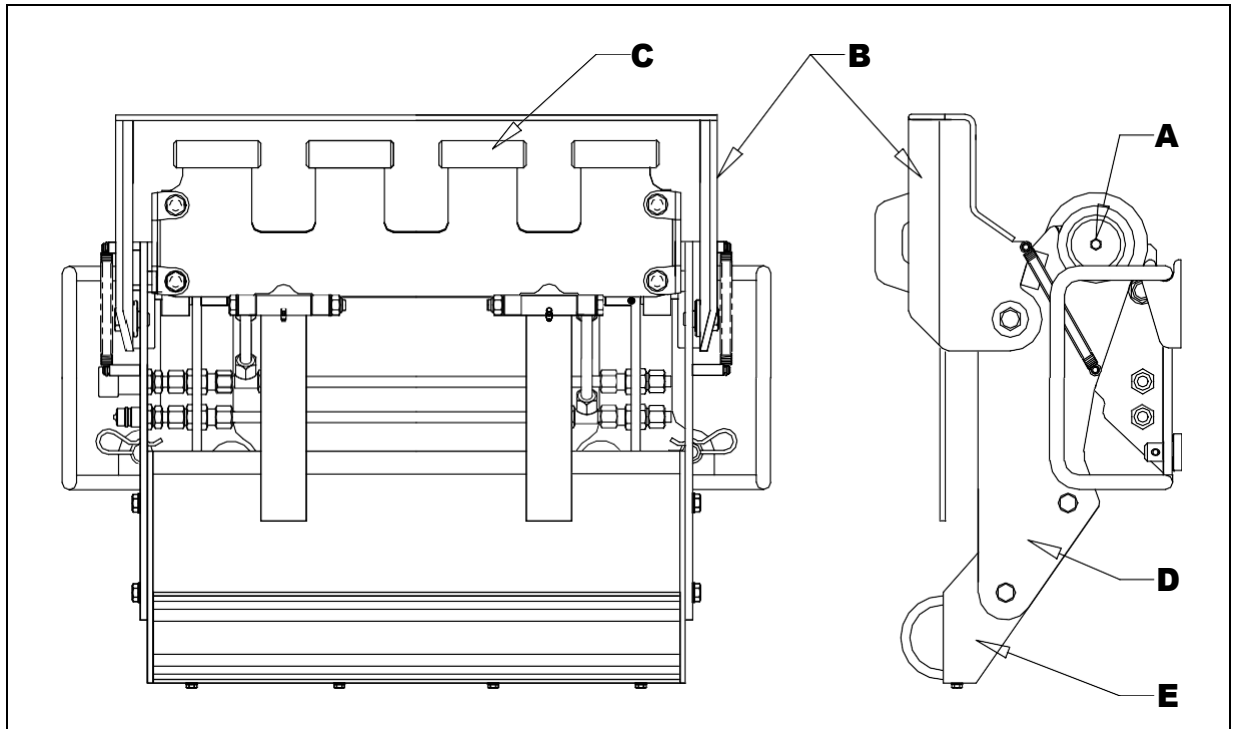
- See page 2 for delivery arrangements -

Invoice values of R30,000 and above qualify for free delivery within the borders of South Africa. Delivery is by economy road freight only and may take several days.

NEEDING PARTS SOONER, PLEASE ARRANGE YOUR OWN COURIER AT YOUR OWN COST.

# ML 150 BIN LIFTER ASSEMBLY

Rough guide to component identification



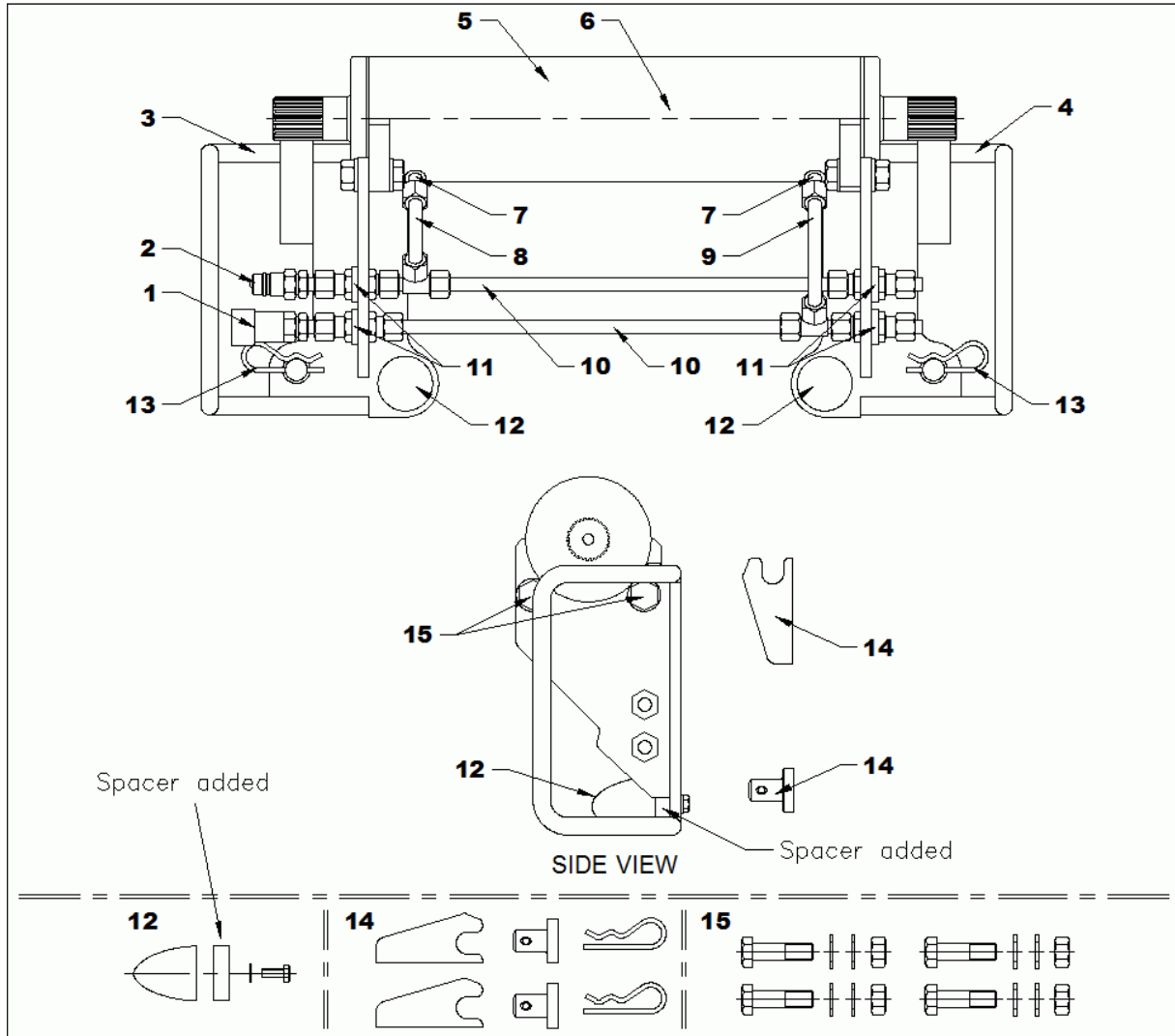
Ref	PART	Page
A	Actuator & Carrier Assembly <i>incl.</i> Actuator Service Parts	4, 5, 6
B	Lip Catch Assembly ( known to some as a Lid )	7
C	Comb Plate & Fulcrum Arm Assemblies	8, 9, 10
D	Swing Arm Assemblies LH & RH	11, 12
E	Cross Member Box Assembly ( known to some as a Push Box )	13

Contact details for Mechlift on page 15

## Partsmen:

- **Always** quote the Mechlift part numbers when ordering parts
- Part numbers ending in 1 or 3 usually refer to Left Hand Side parts
- Part numbers ending in 2 or 4 usually refer to Right Hand Side parts

# ACTUATOR & CARRIER

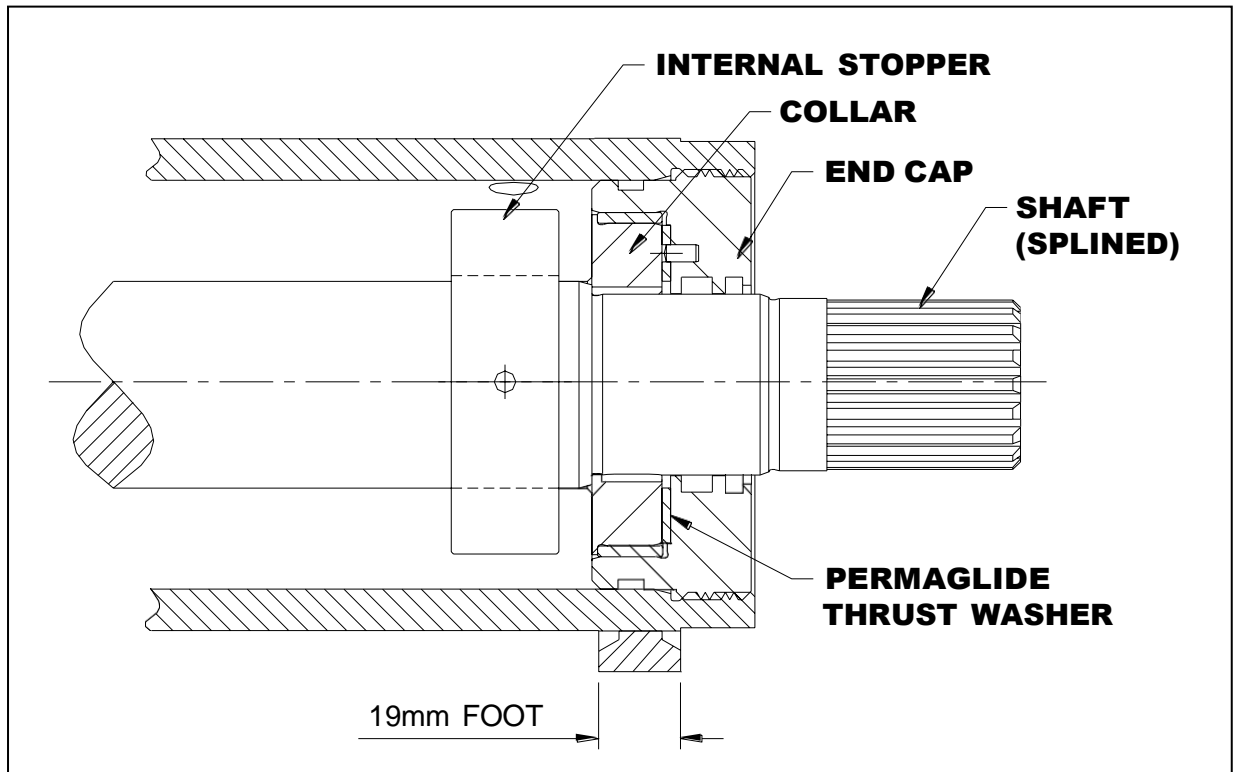


## Actuator and Carrier (cont.):

No.	PART No.	PART	Qty per Lifter
1	HCF12,5.ISO	QUICK COUPLER 1/2 FEMALE PIN TYPE	1
2	HCM12,5.ISO	QUICK COUPLER 1/2 MALE PIN TYPE	1
3	15 11 101 W	ACTUATOR SUPPORT BRACKET -- LH	1
4	15 11 102 W	ACTUATOR SUPPORT BRACKET – RH	1
5	08 10 117 X	ACTUATOR – <i>See page 6 for service parts</i>	1
6	Actuator Parts	ACTUATOR SERVICE PARTS	1
7	03 70 001 T	SPECIAL FITTING – ACTUATOR PORT	2
8	15 10 002 E	PIPE – ‘L’ SHAPE ASSEMBLY	1
9	15 10 001 E	PIPE – ‘S’ SHAPE ASSEMBLY	1
10	15 10 003 E	PIPE – STRAIGHT ASSEMBLY (same top and bottom)	2
11	03 10 201 E	PIPE FITTING SPACER	4
12	05 10 060 K	CONICAL BUMP RUBBER KIT	2
13	MS12	GRIP CLIP S12	2
14	07 91 100 K	WELD ON ATTACHMENT KIT (hooks, stubs & grip clips)	1
15	07 90 106 K	KIT – ACTUATOR FASTNERS	1

**Contact details for Mechlifft on Page 15**

# ACTUATOR SERVICE PARTS



Part No.	Part	Qty per Actuator
08 10 117 X	ACTUATOR	1
A SKH25 000	SEAL & BRG KIT – For full overhaul (Genuine OEM)(includes stopper , thrust washers and seals)	1
A SKH25 300	SEAL KIT – End cap side only (Genuine OEM)(includes wiper, seal, o’ring, backup ring)	2
06 10 116 T	ACTUATOR INTERNAL STOPPER <b>(use only genuine part)</b>	1
A SKH25 002	THRUST WASHER	2
08 10 117 X SFT	*SHAFT <i>Confirm price AND supply actuator serial number</i>	1
08 10 117 X CO	COLLAR – HKS Brand	2
08 10 117 X EC	END CAP (without seals) – HKS Brand	2

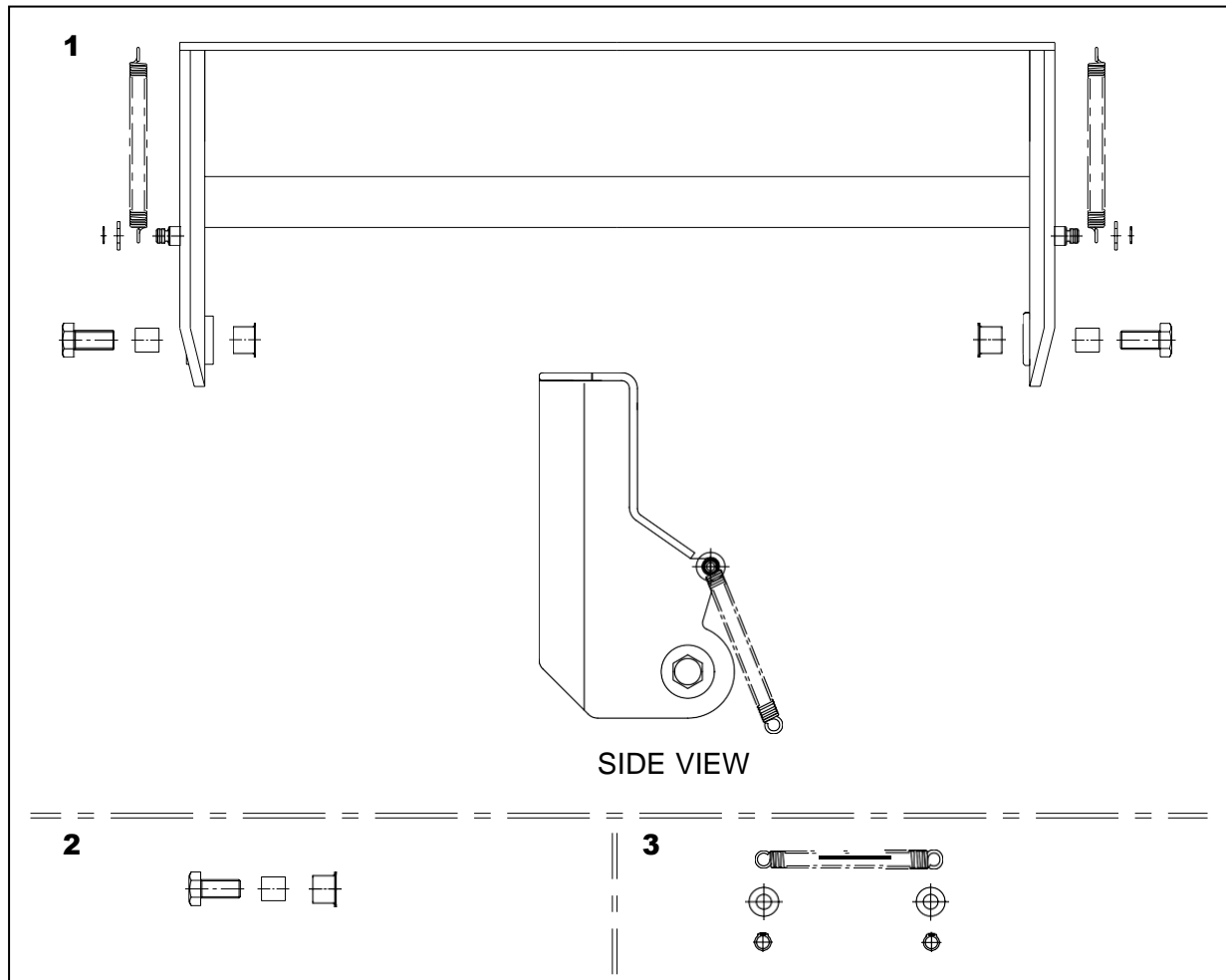
## IMPORTANT INFORMATION

Observe internal timing marks **BEFORE** pulling piston and shaft from barrel

**\* replacing shaft? Best if Fulcrum arms are also renewed \***

# LIP CATCH FRAME ASSEMBLY

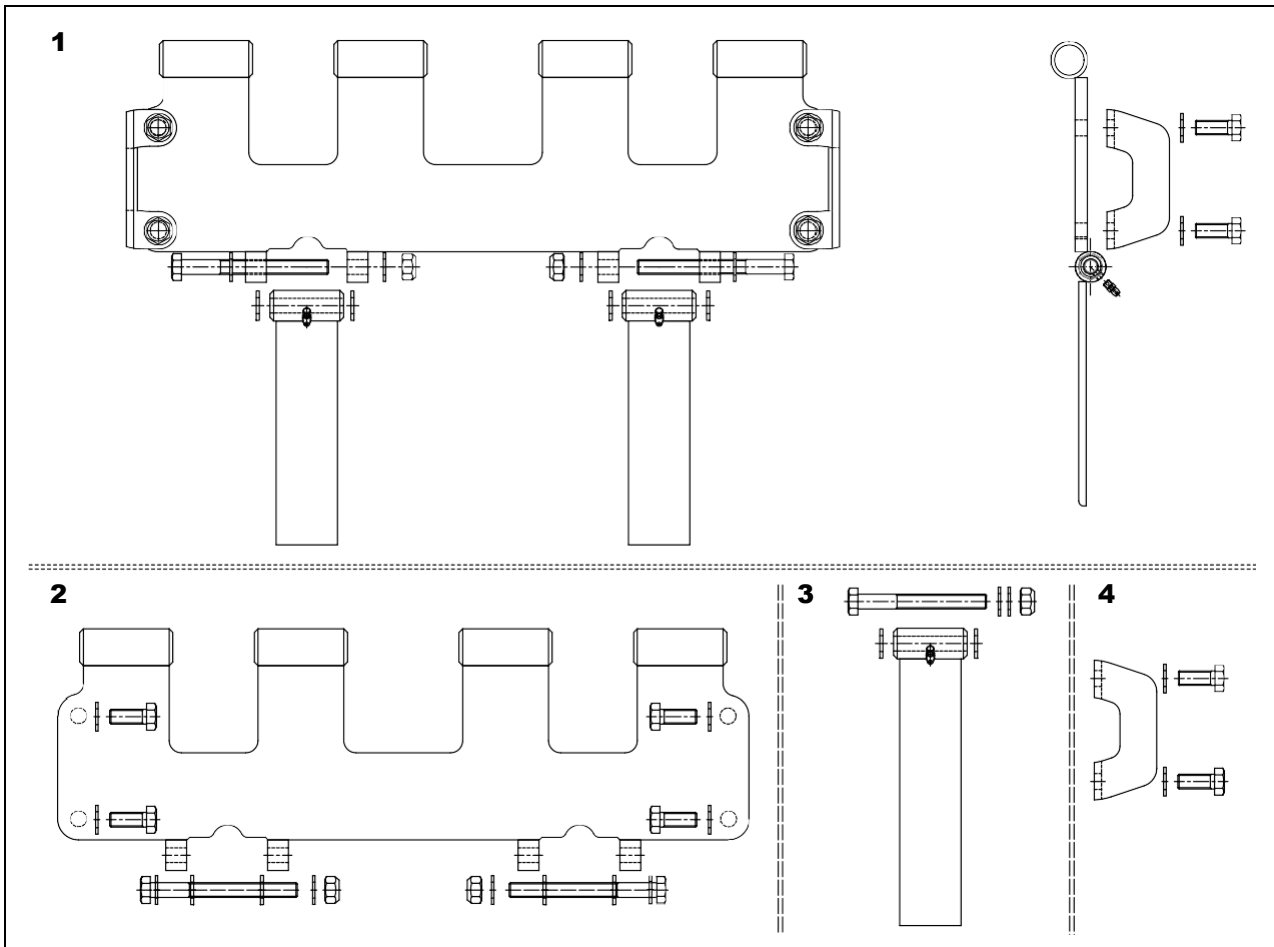
Part Number: 15 30 000 A



Block	Part No.	Part	Qty per Lifter
1	15 30 000 A	LIP CATCH FRAME ASSEMBLY (includes blocks 2 & 3)	1
2	07 91 101 K	BUSH KIT – Lip Catch Frame to Swing Arm	2
3	07 91 102 K	SPRING KIT – Lip Catch Frame	2

# COMB PLATE ASSEMBLY

Part Number: 15 50 000 A

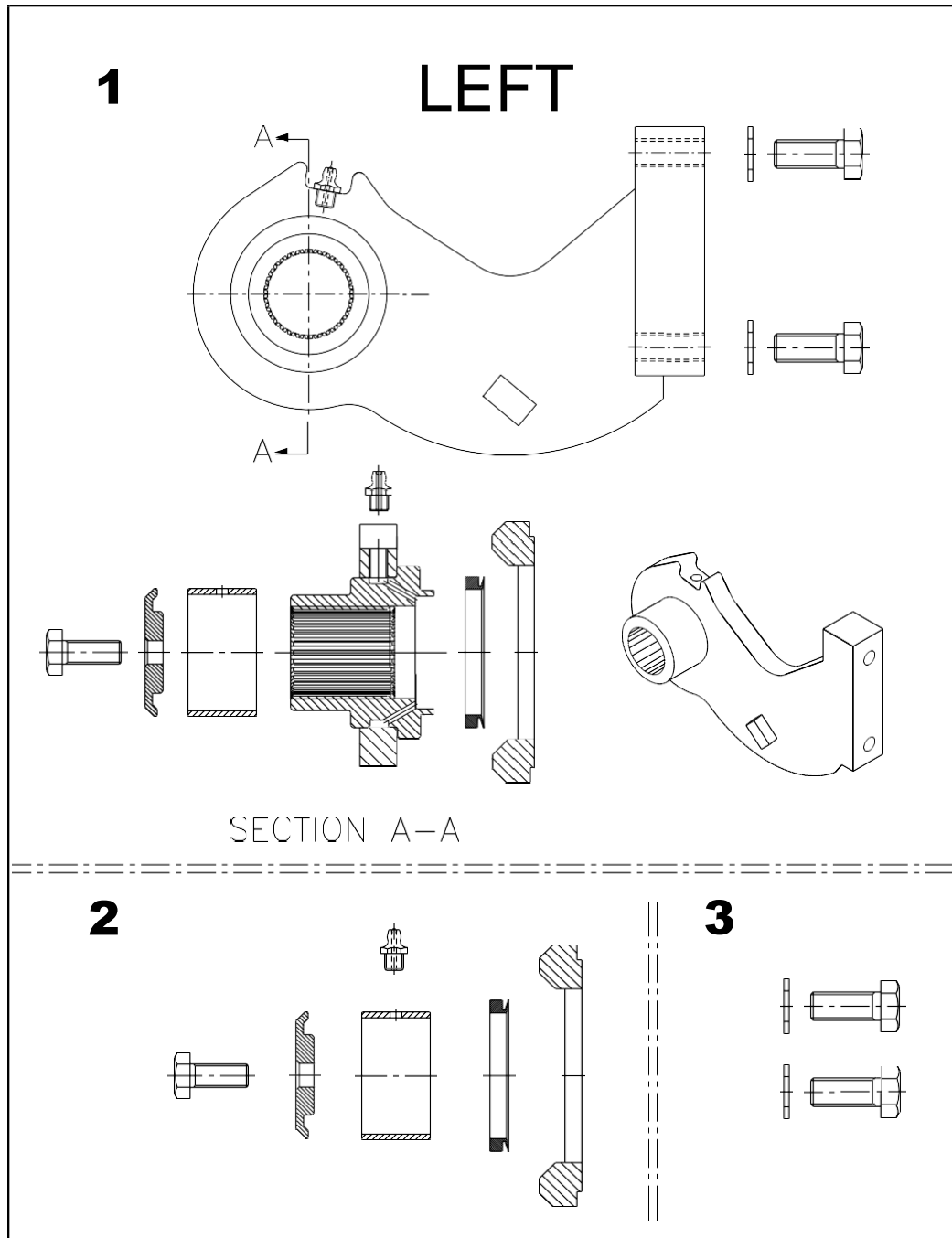


Block	Part No.	Part	Qty per Lifter
1	15 50 000 A	COMB PLATE ASSEMBLY (non RFID) (Includes blocks 2, 3 & 4) - OBSOLETE	1
1a	15 50 001 A	COMB PLATE ASSEMBLY plus RFID ready (Includes blocks 2, 3 & 4)	1
2	15 52 100 K	COMB PLATE KIT (non RFID) - OBSOLETE	1
2a	15 52 101 K	COMB PLATE KIT plus RFID ready	1
3	15 53 100 K	OVERTIP FLAP KIT	2
4	15 50 020 K	PLATE – Lid Comb Interlock Kit	2



# FULCRUM ARM ASSEMBLY - LH

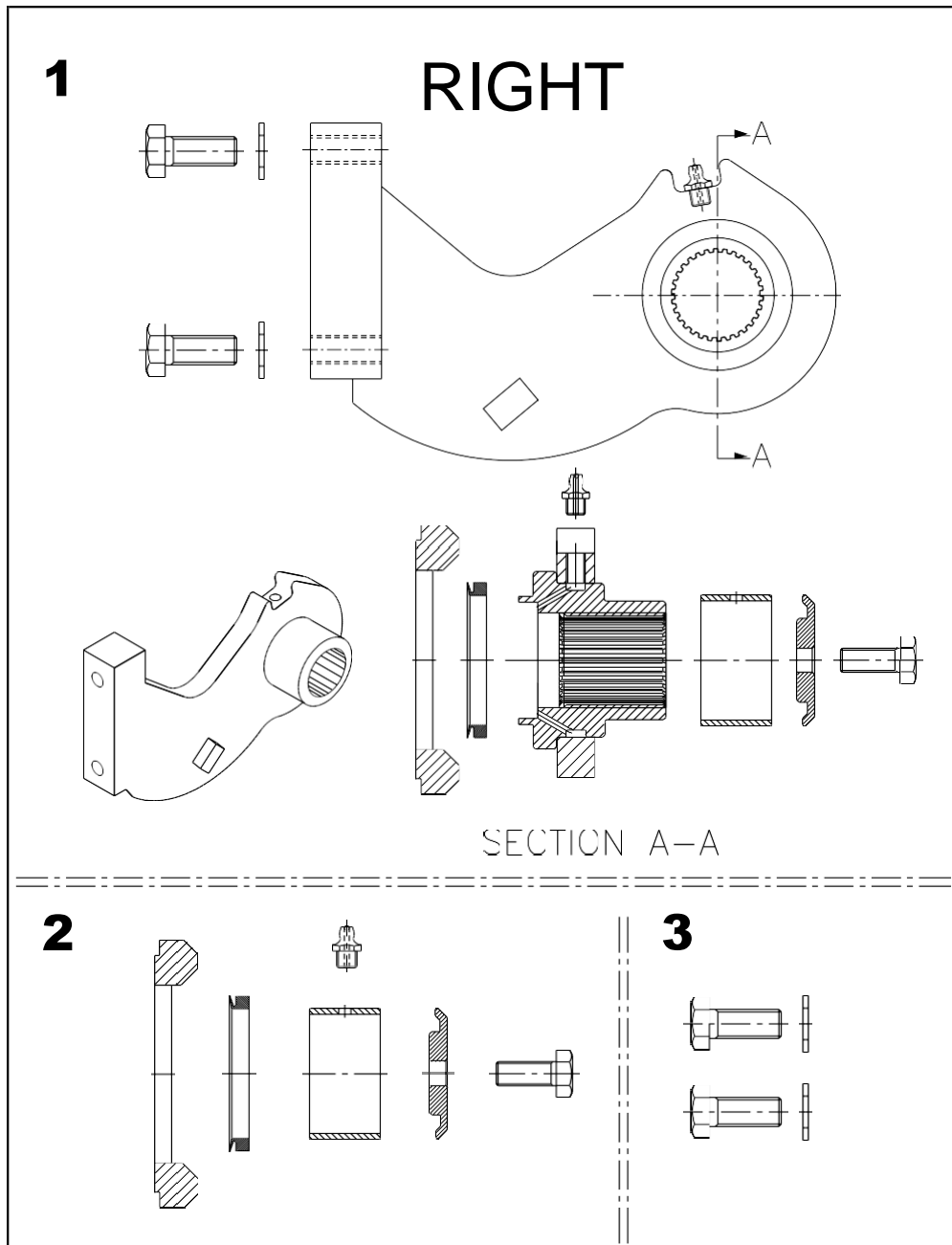
Part Number: 15 55 103 A



Block	Part No.	Part	Qty per Lifter
1	15 55 103 A	FULCRUM ARM ASSEMBLY – LH (incl. 2 & 3)	1
2	07 91 103 K	FULCRUM ARM SERVICE KIT	2
3	07 91 104 K	BOLT KIT - FULCRUM ARM TO COMB PLATE	2

# FULCRUM ARM ASSEMBLY - RH

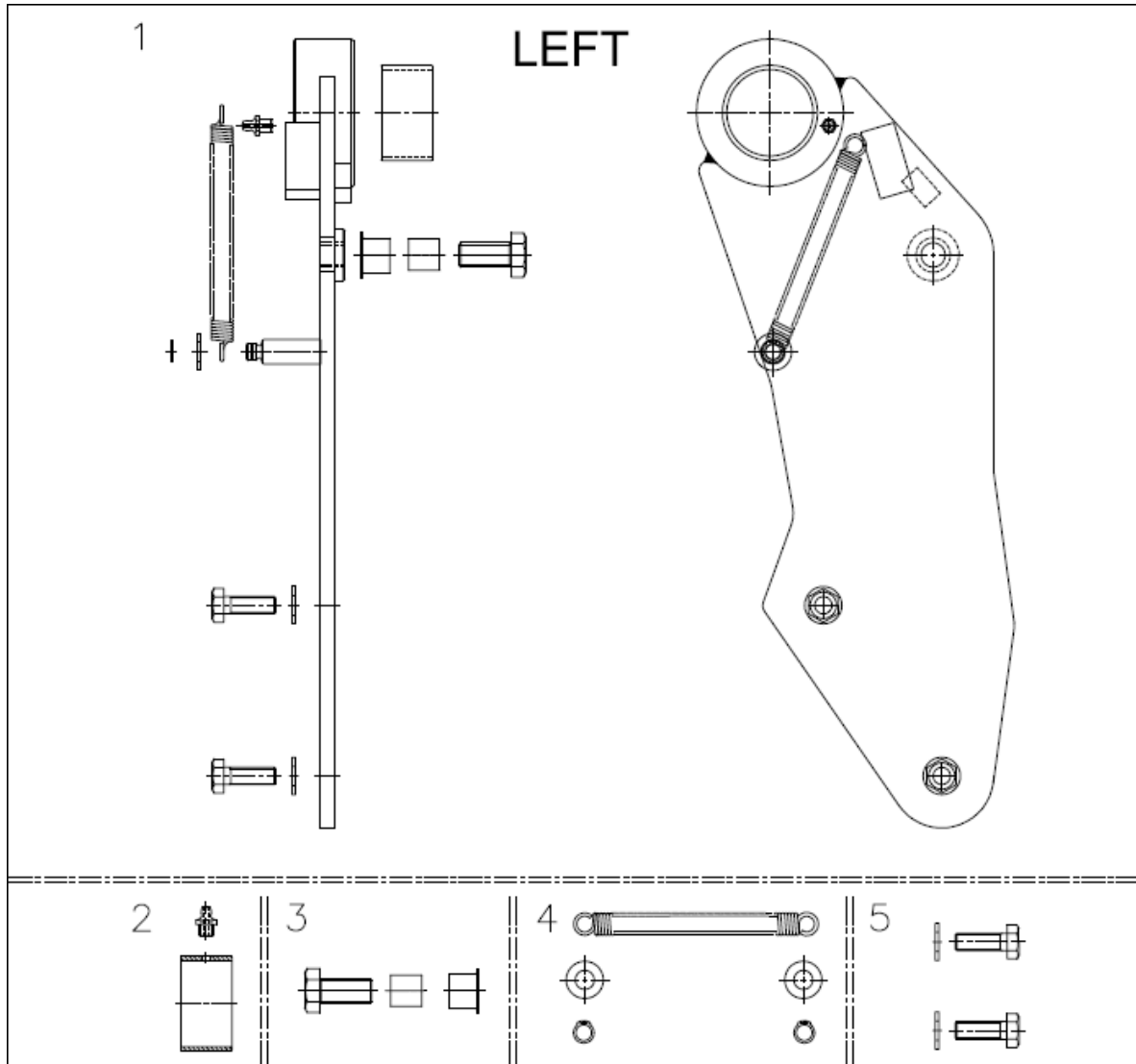
Part Number: 15 55 104 A



Block	Part No.	Part	Qty per Lifter
1	15 55 104 A	FULCRUM ARM ASSEMBLY – RH (incl. 2 & 3)	1
2	07 91 103 K	FULCRUM ARM SERVICE KIT	2
3	07 91 104 K	BOLT KIT - FULCRUM ARM TO COMB PLATE	2

# SWING ARM ASSEMBLY - LH

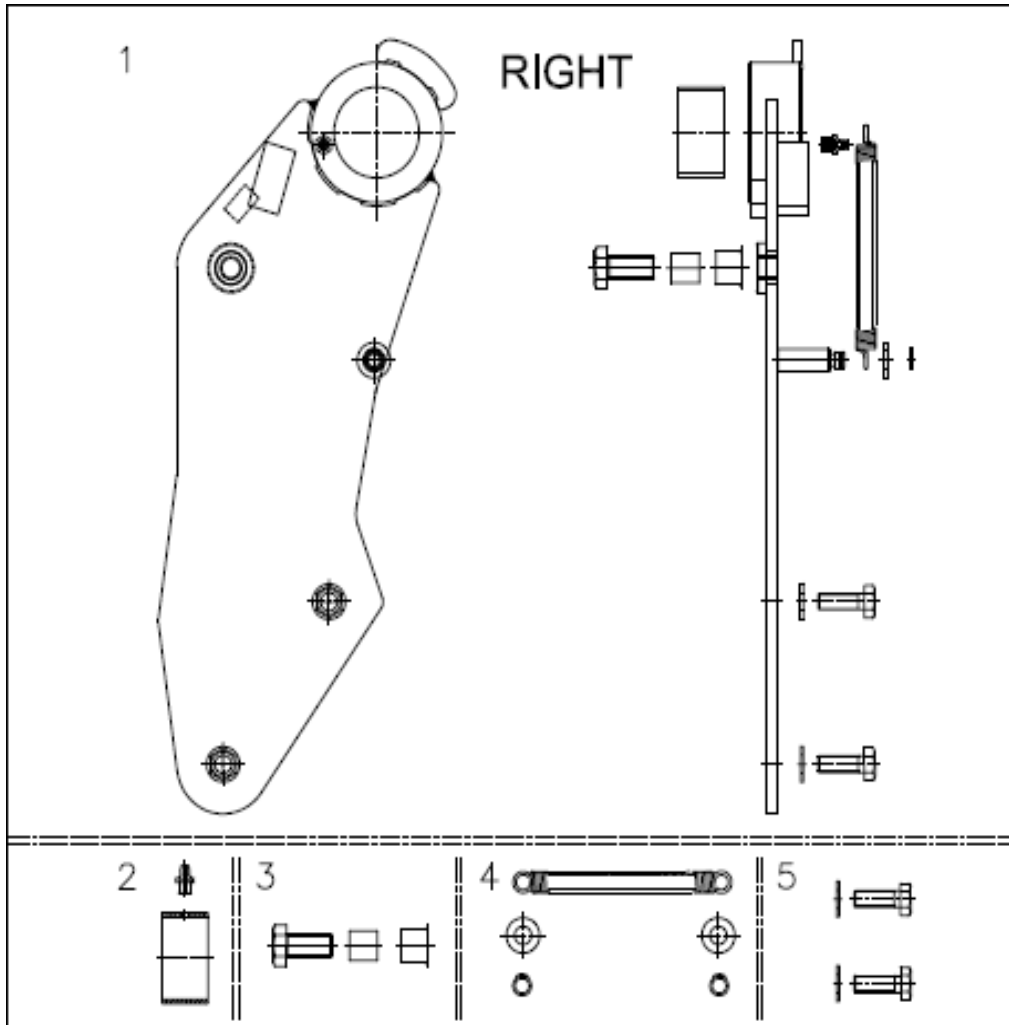
Part Number: 15 75 101 A



Block	Part No.	Part	Qty per Lifter
1	15 75 101 A	SWING ARM LH ASSEMBLY (Includes blocks 2, 3, 4 & 5)	1
2	07 91 105 K	SERVICE KIT – Swing Arm	2
3	07 91 101 K	BUSH KIT – Lip Catch Frame to Swing Frame	2
4	07 91 102 K	SPRING KIT – Lip Catch Frame	2
5	07 91 106 K	BOLT KIT – Swing Arm to Cross Member Box	2

# SWING ARM ASSEMBLY - RH

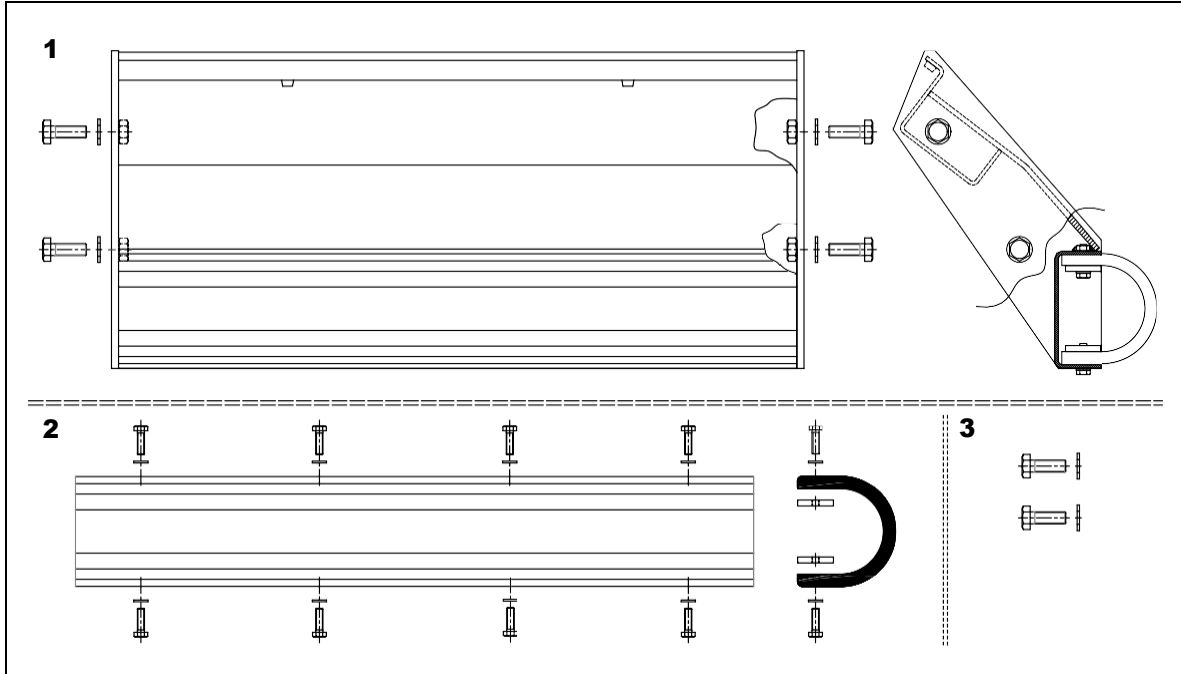
Part Number: 15 75 102 A



Block	Part No.	Part	Qty per Lifter
1	15 75 102 A	SWING ARM RH ASSEMBLY (Includes blocks 2, 3, 4 & 5)	1
2	07 91 105 K	SERVICE KIT – Swing Arm	2
3	07 91 101 K	BUSH KIT – Lip Catch Frame to Swing Frame	2
4	07 91 102 K	SPRING KIT – Lip Catch Frame	2
5	07 91 106 K	BOLT KIT – Swing Arm to Cross Member Box	2

# CROSS MEMBER BOX

Part Number: 15 76 100 A



Block	Part No.	Part	Qty per Lifter
1	15 76 100 A	CROSS MEMBER BOX ASSEMBLY (Includes blocks 1, 2, 3)	1
2	07 91 107 K	RUBBER PUSH PAD KIT – Cross Member Box	1
3	07 91 106 K	BOLT KIT – Cross Member Box	2

**Make your notes below.**

# Contact information:

Please feel free to contact us should you have any queries or need any further information:

Telephone: +27 (0) 21 386 0404

E-mail:  
... General enquiries [query@mechlift.com](mailto:query@mechlift.com)  
... **Sales matters** [sales@mechlift.com](mailto:sales@mechlift.com)

Web address: [www.mechlift.com](http://www.mechlift.com)

Physical Address: 84 Mobile Road Airport Industria Cape Town 7490  
South Africa

Postal Address: 84 Mobile Road Airport Industria Cape Town 7490  
South Africa

## **Note:**

Some assemblies may require more than one of the same unit, part or kit. Mechlift (Pty) Ltd reserves the right to change prices and/or part numbers without notification. (based on Euro/Pound rate 20:23)

## **Copyright ©**

This publication, or parts thereof, may not be reproduced in any form, by any method, for any purpose, without prior written permission from Mechlift (Pty) Ltd

## **Liability**

Whilst every attempt has been made to assure the accuracy of this manual, Mechlift (Pty) Ltd cannot accept responsibility for any errors, which may occur. All information given is subject to change without notice.