

MECHlift ML 220 Bin Lifter



Spare Parts Catalogue

- See page 2 for delivery arrangements -



Invoice values of R30,000 and above qualify for free delivery within the borders of South Africa. Delivery is by economy road freight only and may take several days.

NEEDING PARTS SOONER, PLEASE ARRANGE YOUR OWN COURIER AT YOUR OWN COST.

CONTENTS:

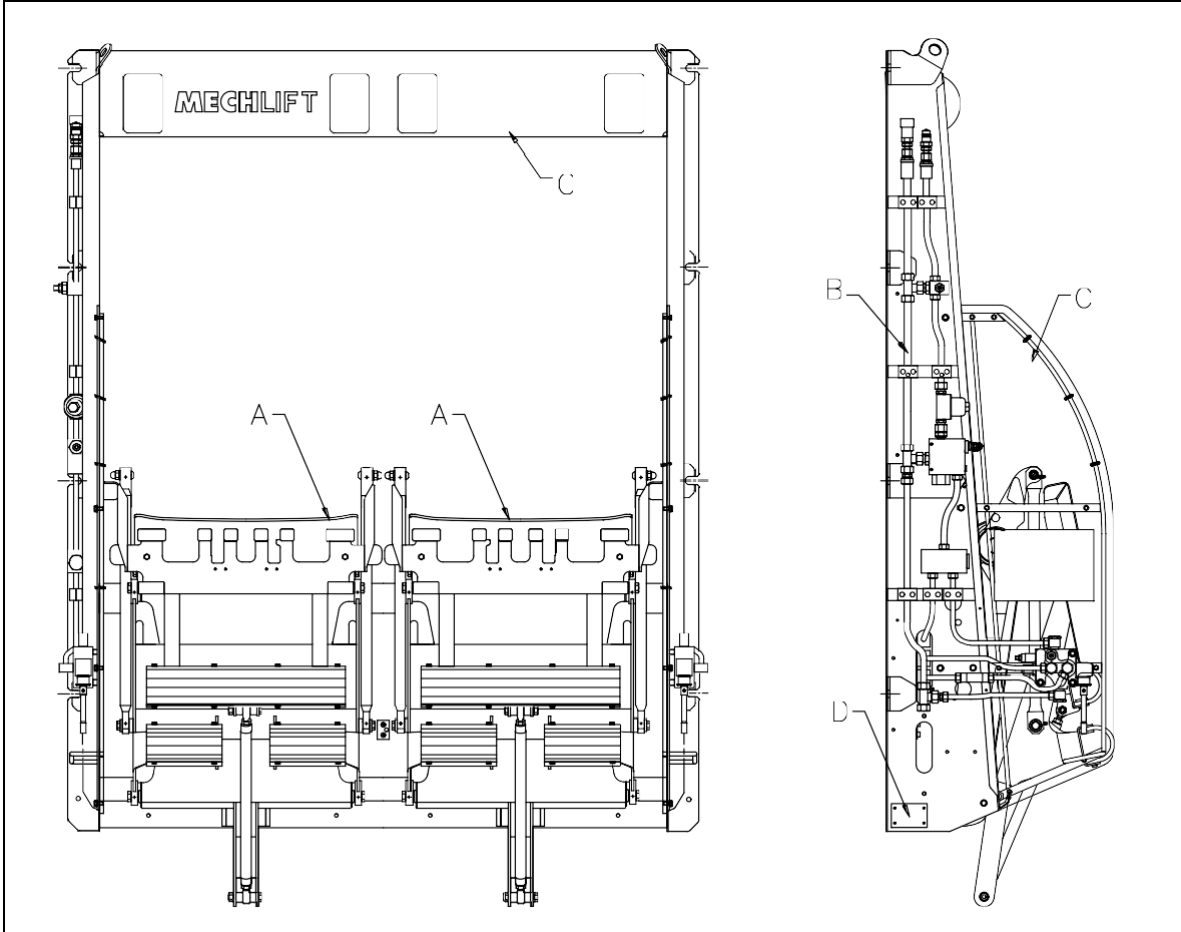
	Page
Identifying the lifter, finding its Model and Serial Number	4
Identifying the Lifter Sub-Assembly components.....	5
 ..Lifter sub-assembly	
Fulcrum Arm and Hub Assembly - LHS.....	6
Fulcrum Arm and Hub Assembly - RHS	7
H Frame	8
Comb Frame	9
Long Link Rod.....	10
Short Link Rod	11
Swing Frame.....	12
Re-Bush Service kits	13
 ..Main Frame assembly	
Main Frame	14
Carrier Frame.....	15
Guard Screen / Frame - LHS	16
Guard Screen / Frame - RHS.....	17
 ..Hydraulics	
Hydraulic System	18
Actuator Service Parts.....	20

Partsmen:

- **Always** quote the Mechlif part numbers when ordering parts
- Part numbers ending in 1 or 3 usually refer to Left Hand Side parts
- Part numbers ending in 2 or 4 usually refer to Right Hand Side parts
- If in doubt, please feel free to contact Mechlif, we are always willing to assist

ML 220 BIN LIFTER ASSEMBLY

Part Number 22 00 100 A

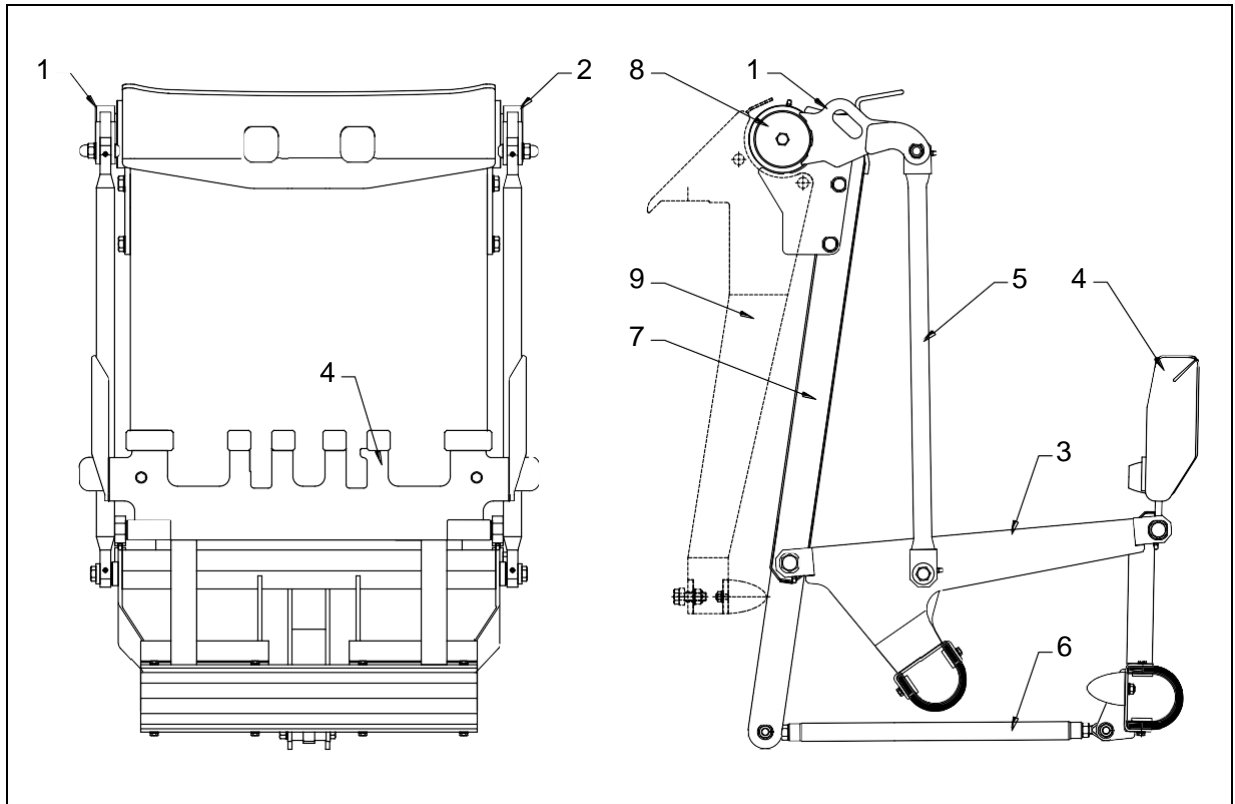


IDENTIFICATION	
A	LIFTER SUB ASSEMBLIES (LH & RH are identical & interchangeable)
B	HYDRAULIC SYSTEM
C	MAIN FRAME ASSEMBLY (including Carriers, Guard Frames)
D	SERIAL AND MODEL NUMBERS are here. (lower left side of lifter)

Ensure you have the Model and Serial Numbers on hand **BEFORE** ordering spares

LIFTER SUB ASSEMBLY

Part Number: 22 00 015 A



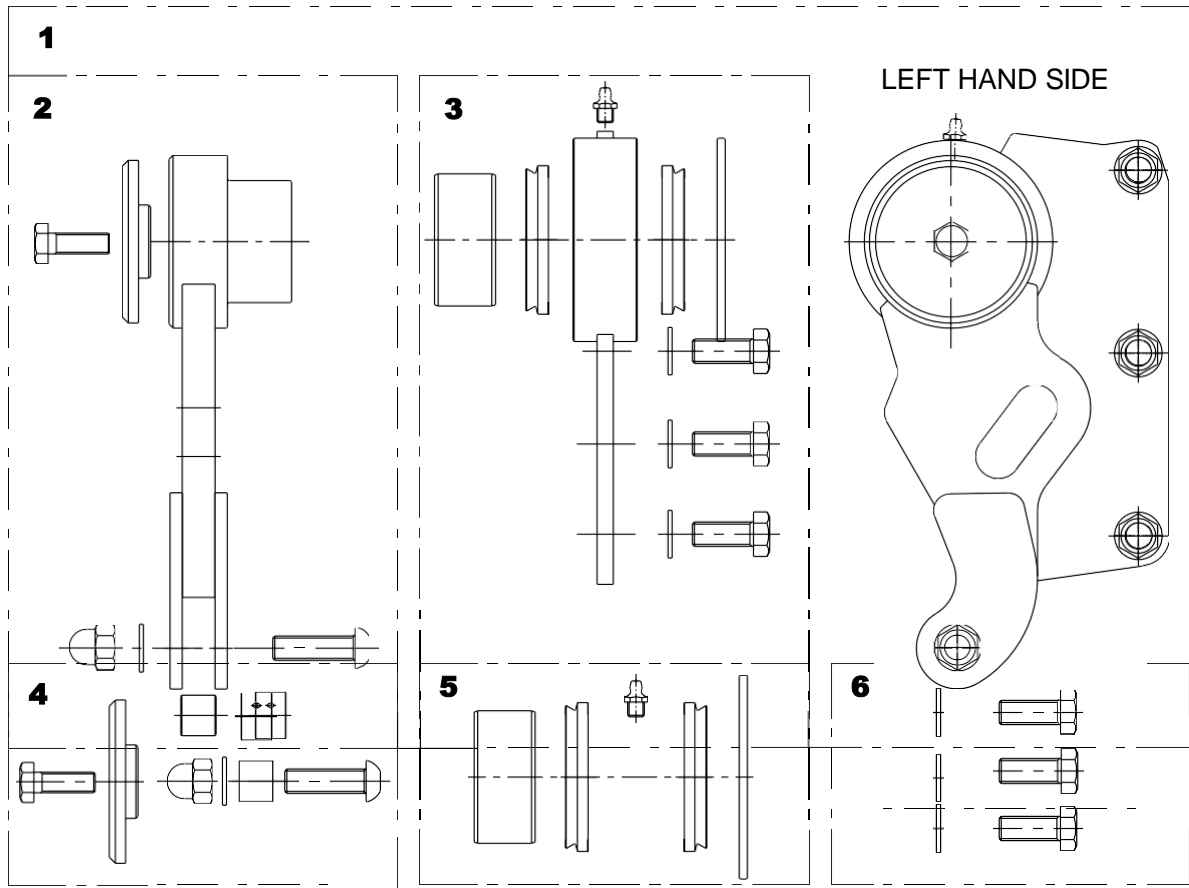
This page tells you what the above parts are called and on what page to find them.

No.	PART	
1	FULCRUM ARM AND HUB ASSEMBLY - LEFT HAND	Page 6
2	FULCRUM ARM AND HUB ASSEMBLY - RIGHT HAND	Page 7
3	H-FRAME ASSEMBLY	Page 8
4	COMB FRAME ASSEMBLY	Page 9
5	LONG LINK ROD ASSEMBLY	Page 10
6	SHORT LINK ROD ASSEMBLY (or Lower Link Rod)	Page 11
7	SWING FRAME ASSEMBLY	Page 12
8	ACTUATOR (hidden) and SERVICE PARTS	Page 20
9	CARRIER FRAME	Page 15

This sub-assembly is sold as a ready replacement part. Also used in side loader applications – Contact Mechlifft

FULCRUM ARM AND HUB ASSEMBLY - LEFT HAND

Part Number: 22 20 001 A

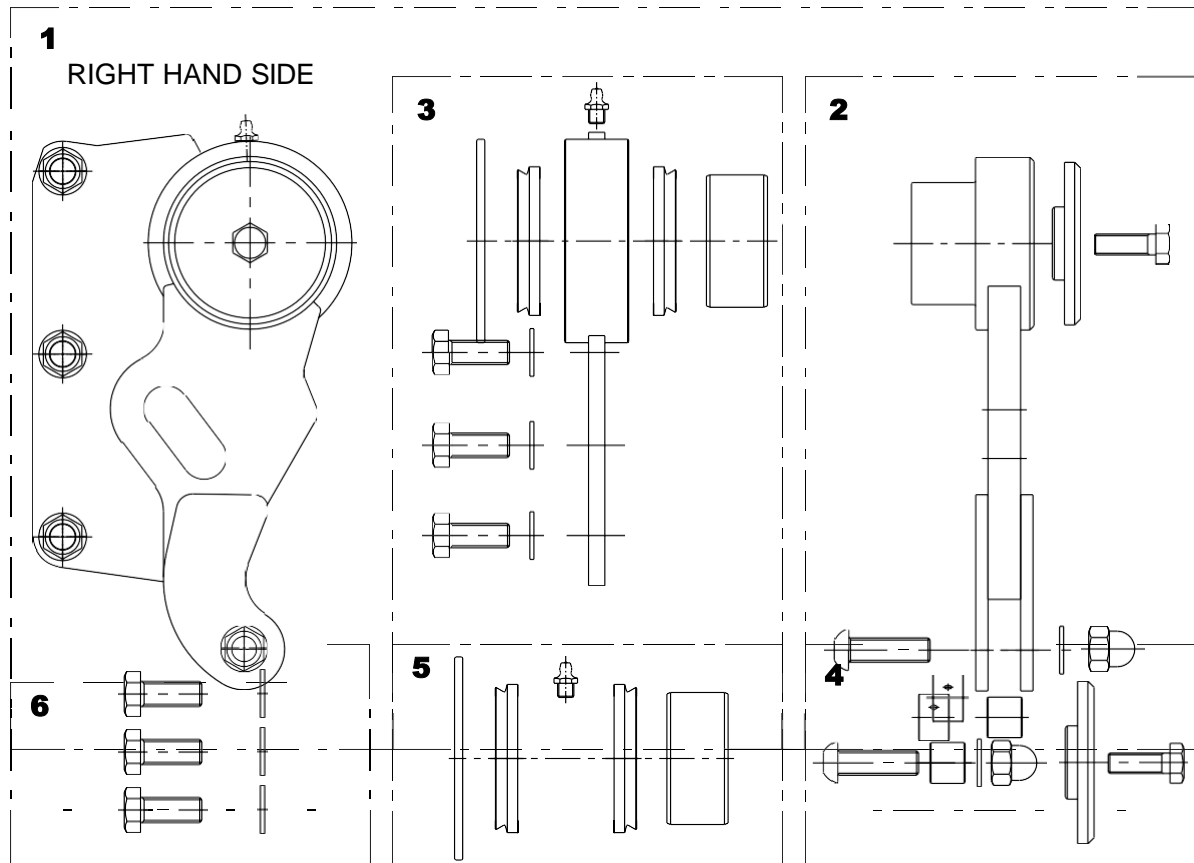


Refer to page 13 for single comprehensive re-bush kits covering the whole lifter

Block	Part No.	Part	Qty per Lifter
1	22 20 001 A	FULCRUM ARM & HUB ASSEMBLY LH (includes blocks 2+3)	1
2	22 20 011 A	FULCRUM ARM ASSEMBLY LH (includes 4)	1
3	22 20 021 A	SWING PLATE ASSEMBLY (includes 5 + 6)	1
4	07 92 210 K	BUSHING KIT – Fulcrum Arm	2
5	07 92 220 K	BUSHING KIT – Swing Plate	2
6	07 92 703 K	BOLT KIT – Swing Plate to Swing Frame	2

FULCRUM ARM AND HUB ASSEMBLY - RIGHT HAND

Part Number: 22 20 002 A

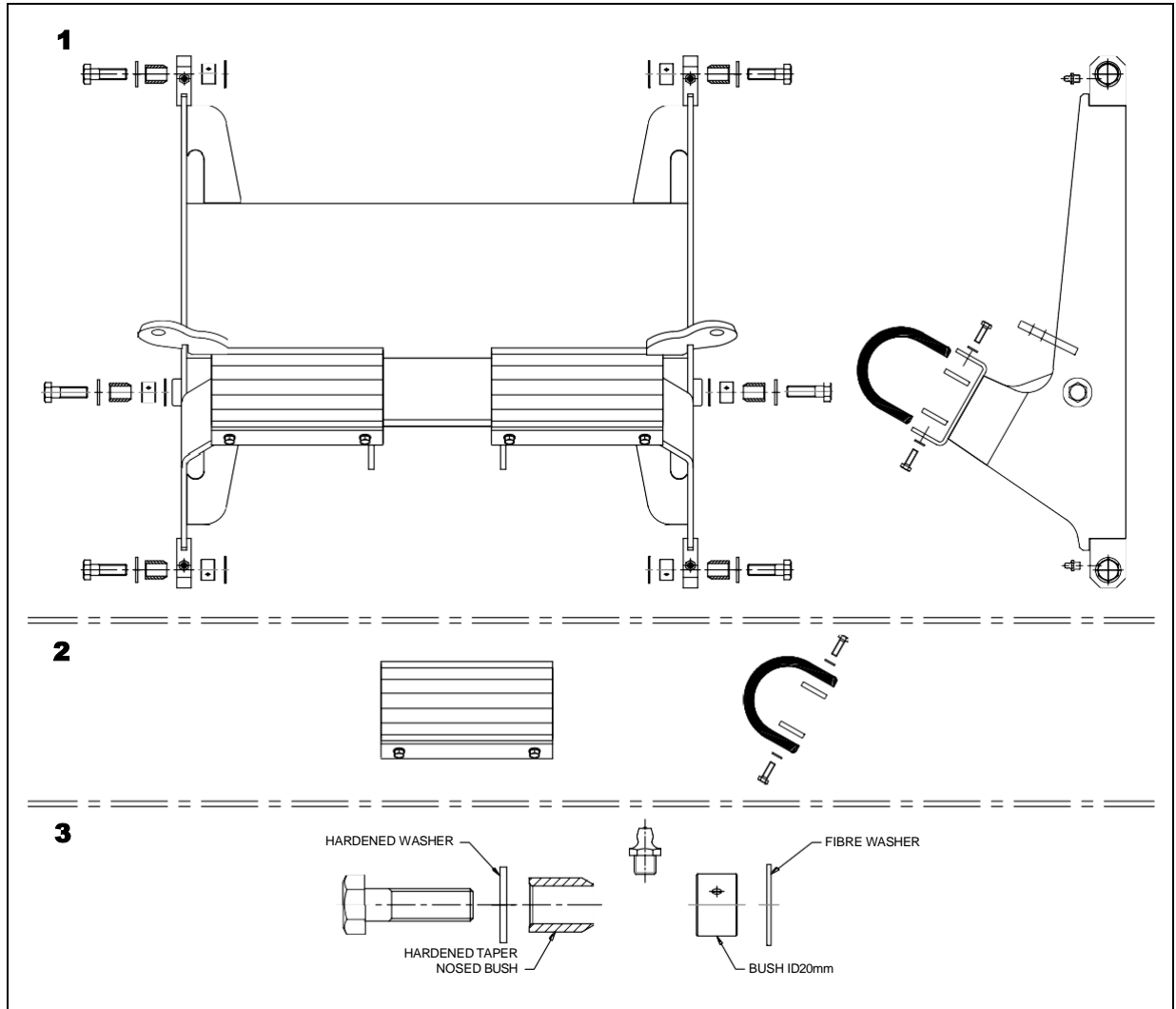


Refer to page 13 for single comprehensive re-bush kits covering the whole lifter

Block	Part No.	Part	Qty per Lifter
1	22 20 002 A	FULCRUM ARM & HUB ASSEMBLY RH (includes blocks 2+3)	1
2	22 20 012 A	FULCRUM ARM ASSEMBLY RH (includes 4)	1
3	22 20 022 A	SWING PLATE ASSEMBLY (includes 5 + 6)	1
4	07 92 210 K	BUSHING KIT – Fulcrum Arm	2
5	07 92 220 K	BUSHING KIT – Swing Plate	2
6	07 92 703 K	BOLT KIT – Swing Plate to Swing Frame	2

H-FRAME ASSEMBLY

Part Number: 22 40 000 A



Block	Part No.	Part	Qty per Lifter
1	22 40 000 A	H-FRAME ASSEMBLY (includes blocks 2 + 3)	1
2	07 92 403 K	RUBBER PUSH PAD KIT – H-Frame	2
3	07 90 100 K	JOINT SERVICE KIT (Taper Nose Bush)	6

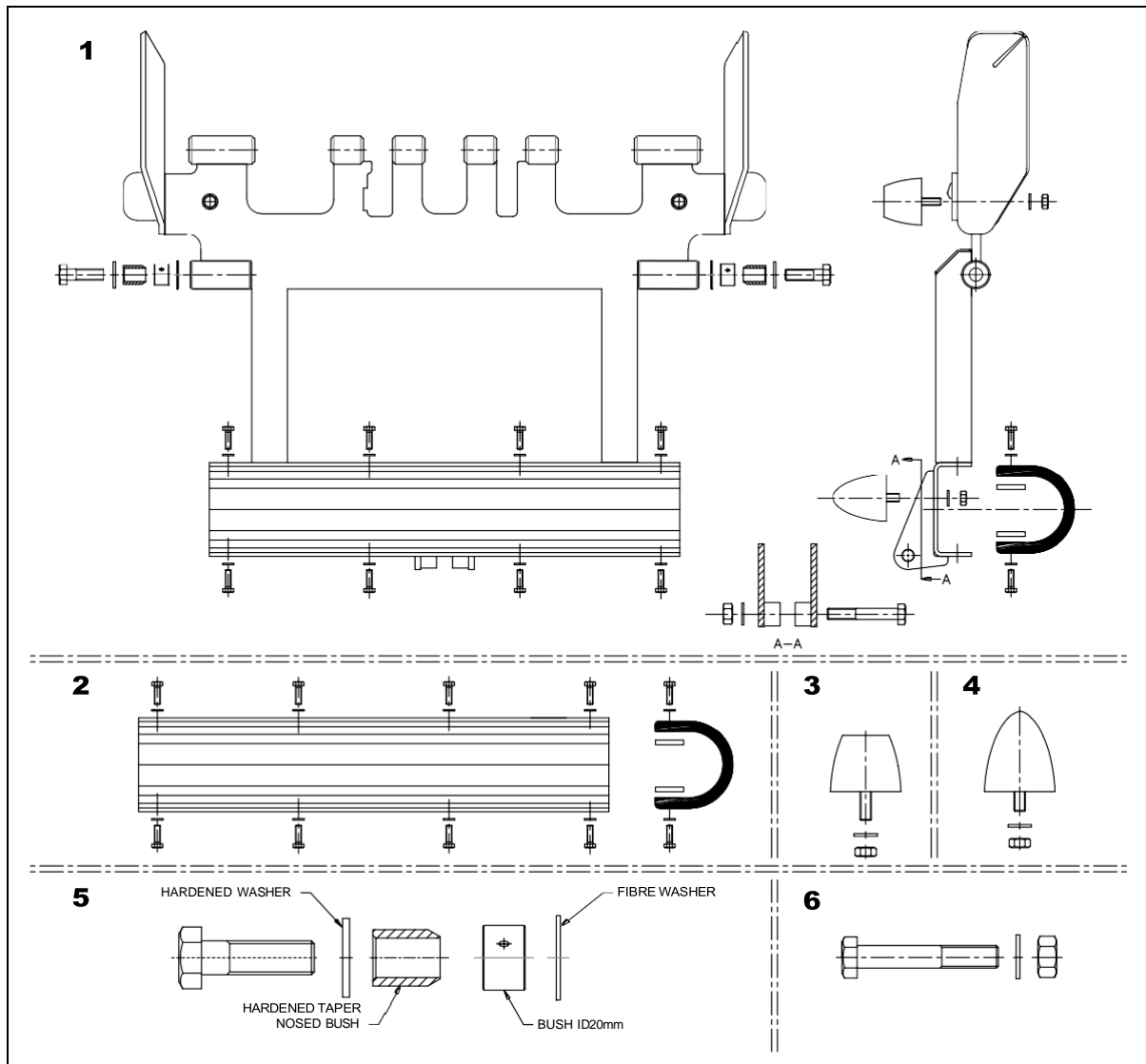
Refer to page 13 for single comprehensive re-bush kits covering the whole lifter

NOTE:

- Two rubber push pads per H-Frame
- Six joint service kits (Taper Nose Bush) per H-Frame

COMB FRAME ASSEMBLY

Part Number: 22 50 000 A



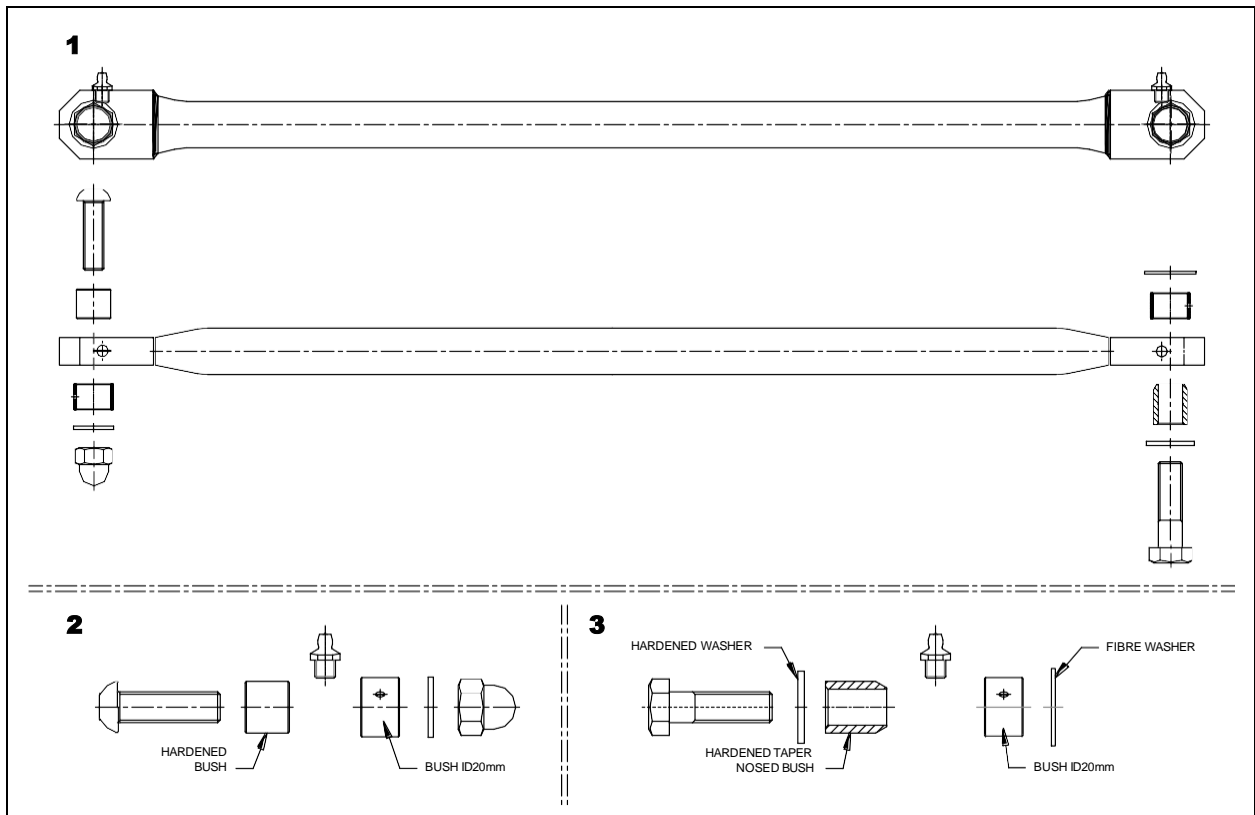
* ACTUAL COMB PROFILE MAY DIFFER FROM OUTLINE ABOVE

Block	Part No.	Part	Qty per Lifter
1	22 50 000 A	COMB FRAME ASSEMBLY (Includes blocks 2, 3, 4, 5 + 6)	1
2	07 92 503 K	RUBBER PUSH PAD KIT – Comb Frame	1
3	05 10 132 K	CONICAL BUMP RUBBER KIT – Flat Top	2
4	05 10 160 K	CONICAL BUMP RUBBER KIT – 60mm	2
5	07 90 100 K	JOINT SERVICE KIT (Taper Nose Bush)	2
6	NPN	BOLT M12 x 80 + WASHER + NUT	1

Refer to page 13 for single comprehensive re-bush kits covering the whole lifter

LONG LINK ROD ASSEMBLY

Part Number: 22 61 100 A



Block	Part No.	Part	Qty per Lifter
1	22 61 100 A	LONG LINK ROD ASSEMBLY (includes blocks 2 + 3)	4
2	07 90 101 K	JOINT SERVICE KIT (Plain Bush)	2
3	07 90 100 K	JOINT SERVICE KIT (Taper Nose Bush)	2

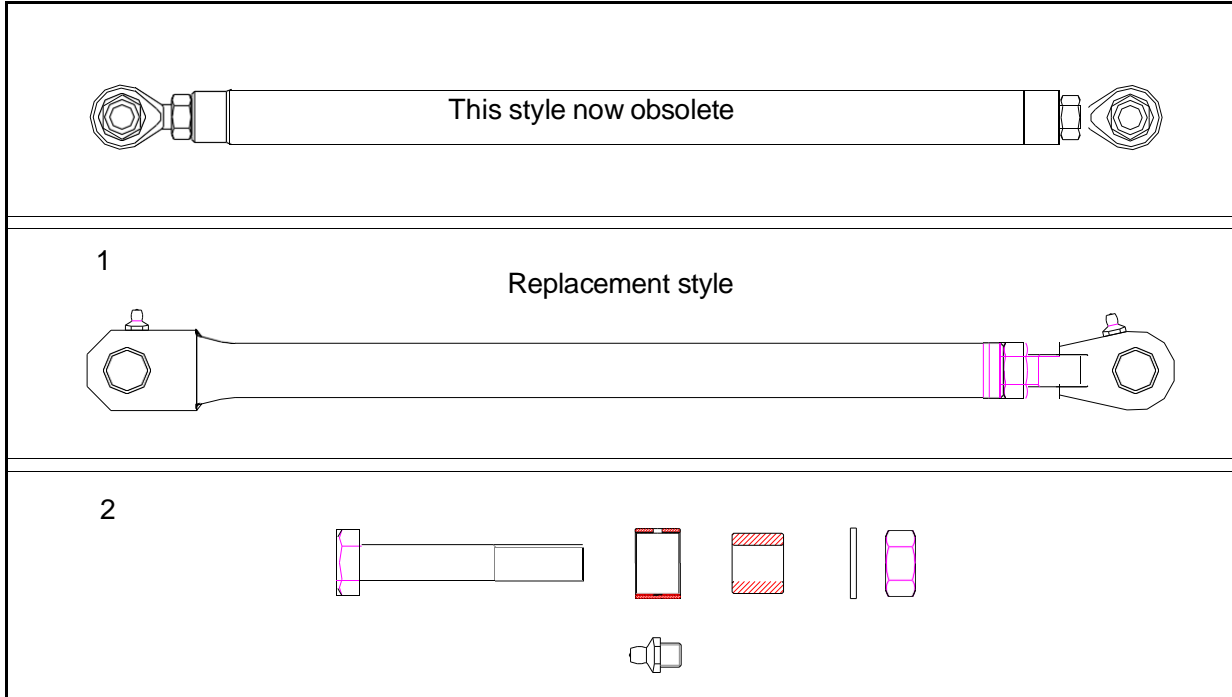
Refer to page 13 for single comprehensive re-bush kits covering the whole lifter

NOTE:

- Two Long Link Rods are required for each Sub Assembly, and four required per complete lifter.

SHORT LINK ROD ASSEMBLY

Part Number 22 62 100 A



Block	Part No.	Part	Qty per Lifter
1	22 62 100 A	SHORT LINK ROD ASSEMBLY (includes block 2, Bolt Kits x 2)	2
2	07 92 504 K	BOLT KIT – Short Link Rod Attachment Points	2

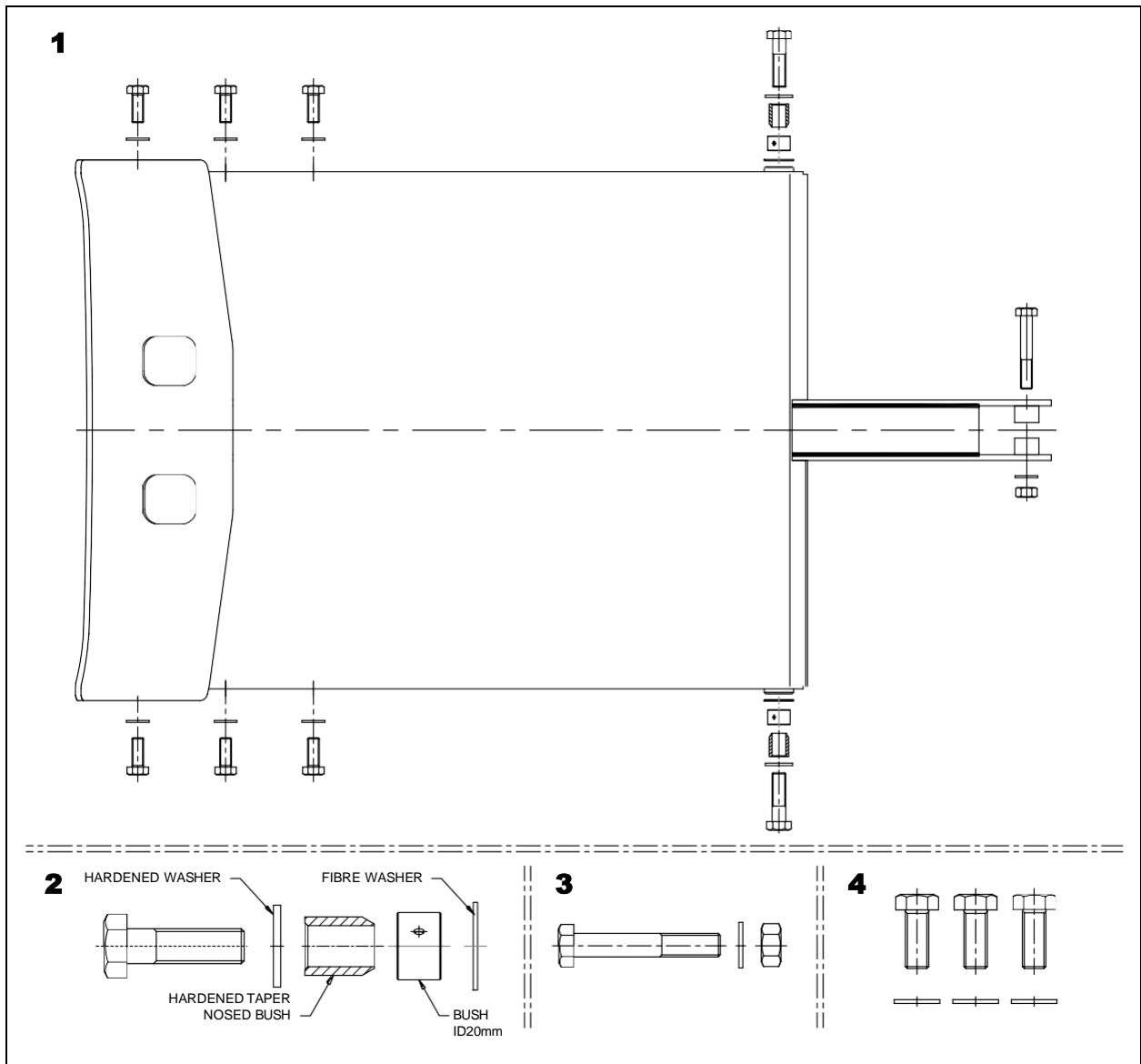
Refer to page 13 for single comprehensive re-bush kits covering the whole lifter

NOTE:

- One Short Link Rod is required for each sub assembly, and two are required per complete lifter.

SWING FRAME ASSEMBLY

Part Number: 22 70 000 A



***** ACTUAL FRAME PROFILES MAY DIFFER FROM OUTLINE ABOVE *****

Block	Part No.	Part	Qty per Lifter
1	22 70 000 A	SWING FRAME ASSEMBLY (includes blocks 2,3+4)	2
2	07 90 100 K	JOINT SERVICE KIT (Taper Nose Bush)	2
3	NPN	BOLT M12 x 80 + WASHER + NUT	1
4	07 92 703 K	BOLT KIT – Swing Plate to Swing Frame	2

Refer to page 13 for single comprehensive re-bush kits covering the whole lifter

RE-BUSH SERVICE KITS

These service kits do not contain parts for servicing the actuators. (See page 20 for actuator parts)		
Part No.	Part	Qty
22 01 003 A	REBUSH KIT – BASIC (A Service)	1
consists of	Taper Nosed Bush - Hardened	6
	Swivel Bush - Hardened	4
	Bush ID20mm	10
	M12 Dome Nut	2
	M14 x50 Screw H8	6
	M12 x40 Button Head Screw	2
	M12 Washer	6
	M12 Nut	2
	M12 x 80mm Bolt	2
	20mm Fibre Washer	6
	M8 x1.25 Grease nipple – straight	12
	M14 Washer - Hardened	6
Part No.	Part	Qty
22 01 006 A	REBUSH KIT – Comprehensive (B Service)	1
consists of	REBUSH KIT – BASIC <i>plus</i>	1
	Bush ID60mm	2
	V-Ring	4
	Washer – Shaft end	2
	Fulcrum arm spacer	2
	M10 x30 Screw H8	2

NOTE:

- these kits are for servicing a **single Sub Assembly** (as shown on page 5).
- **Two kits** are required to service the **Complete** lifter (i.e. both left and right hand sides).

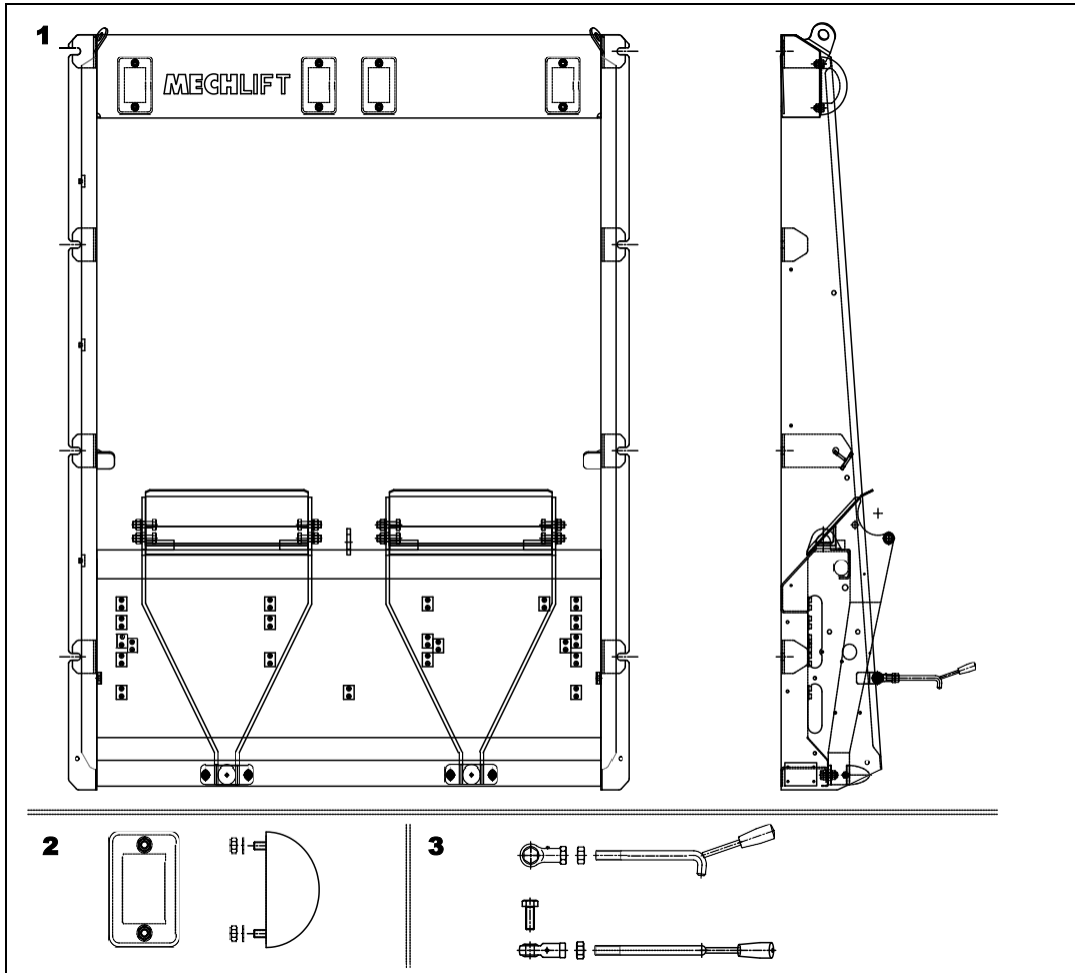
HARDENED TAPER NOSED WEARING BUSHES and WELD-ON ENDS ARE AVAILABLE IN BULK AS FOLLOWS:

- 03 20 120 T -- Taper nose bush (Hardened) (25 Pieces)
- 22 61 120 T -- Weld on rod end (H-Frame and Link Rods) (15 Pieces)
- BPAP 2015 -- Permaglide bush (15 Pieces)

REMEMBER – buying in bulk is more economical

FRAME ASSEMBLY

Part Number: 22 90 000 A



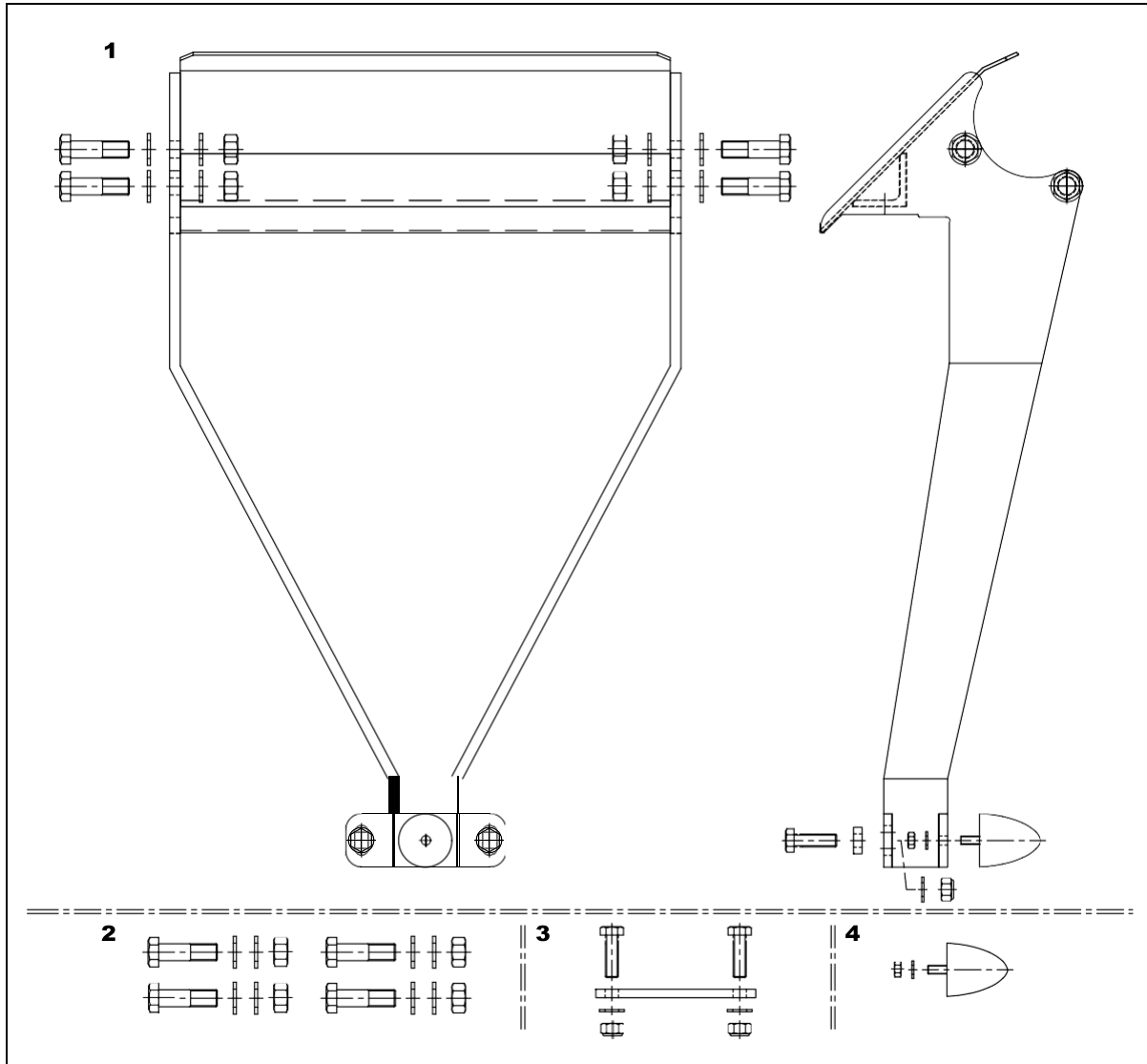
Block	Part No.	Part	Qty per Frame
1	22 90 000 A	FRAME ASSEMBLY (includes blocks 2 + 3)	1
2	07 90 103 K	WHEEL BUMP RUBBER KIT	4
3	07 92 913 K	HOOK KIT	2

Top horizontal channel (with MECHLIFT Logo) is available

Part No 22 92 115G -- It is a weld in component

CARRIER FRAME ASSEMBLY

Part Number: 22 91 200 A

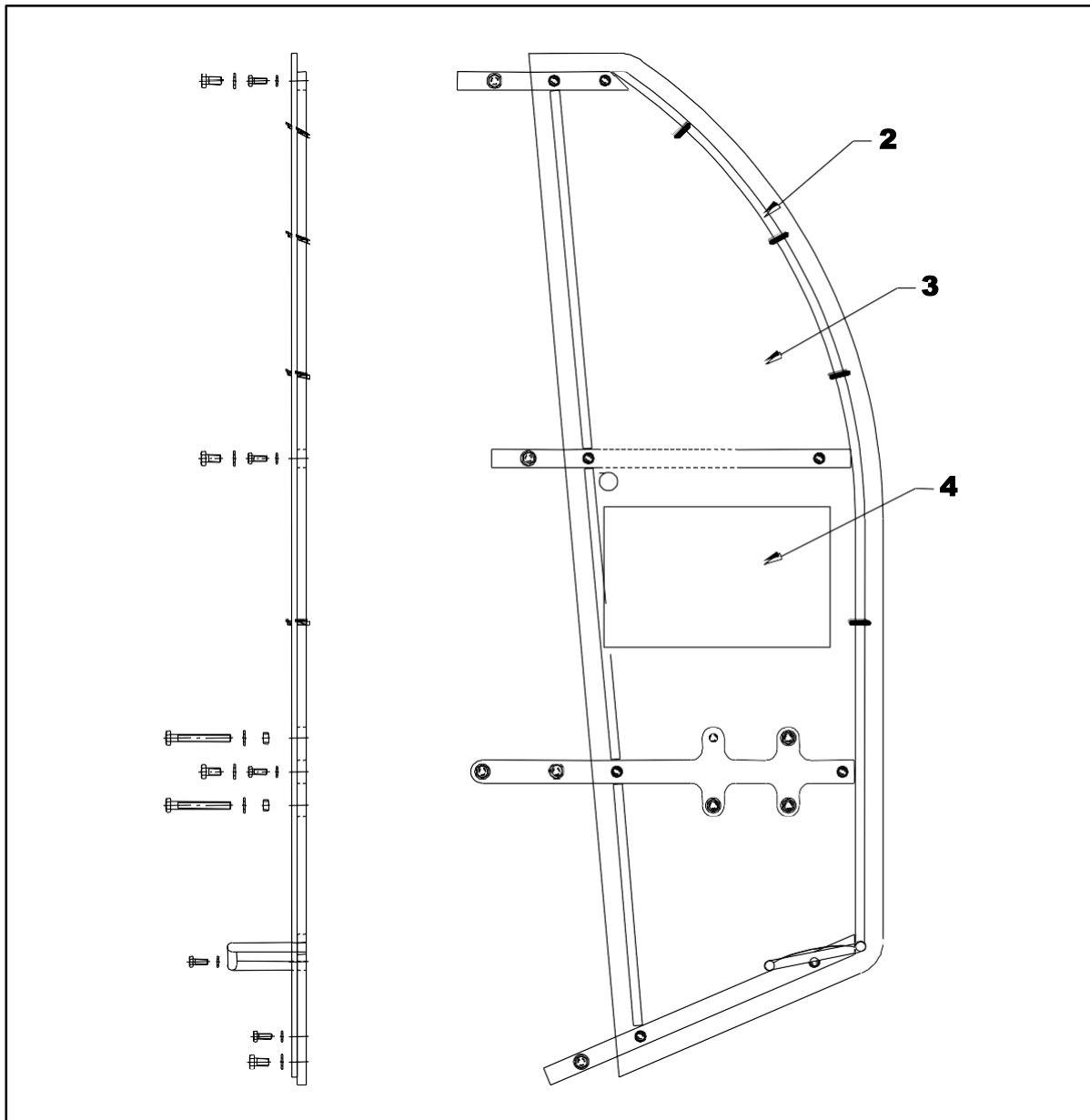


Section C – 1 (Carrier Frame Assembly):

Block	Part No.	Part	Qty per Frame
1	22 91 200 A	CARRIER FRAME ASSEMBLY (includes blocks 2, 3 + 4)	2
2	07 90 106 K	KIT – ACTUATOR FASTENERS	1
3	07 92 914 K	CARRIER LOWER MOUNT KIT	1
4	05 10 160 K	CONICAL BUMP RUBBER KIT	1

GUARD FRAME ASSEMBLY - LH

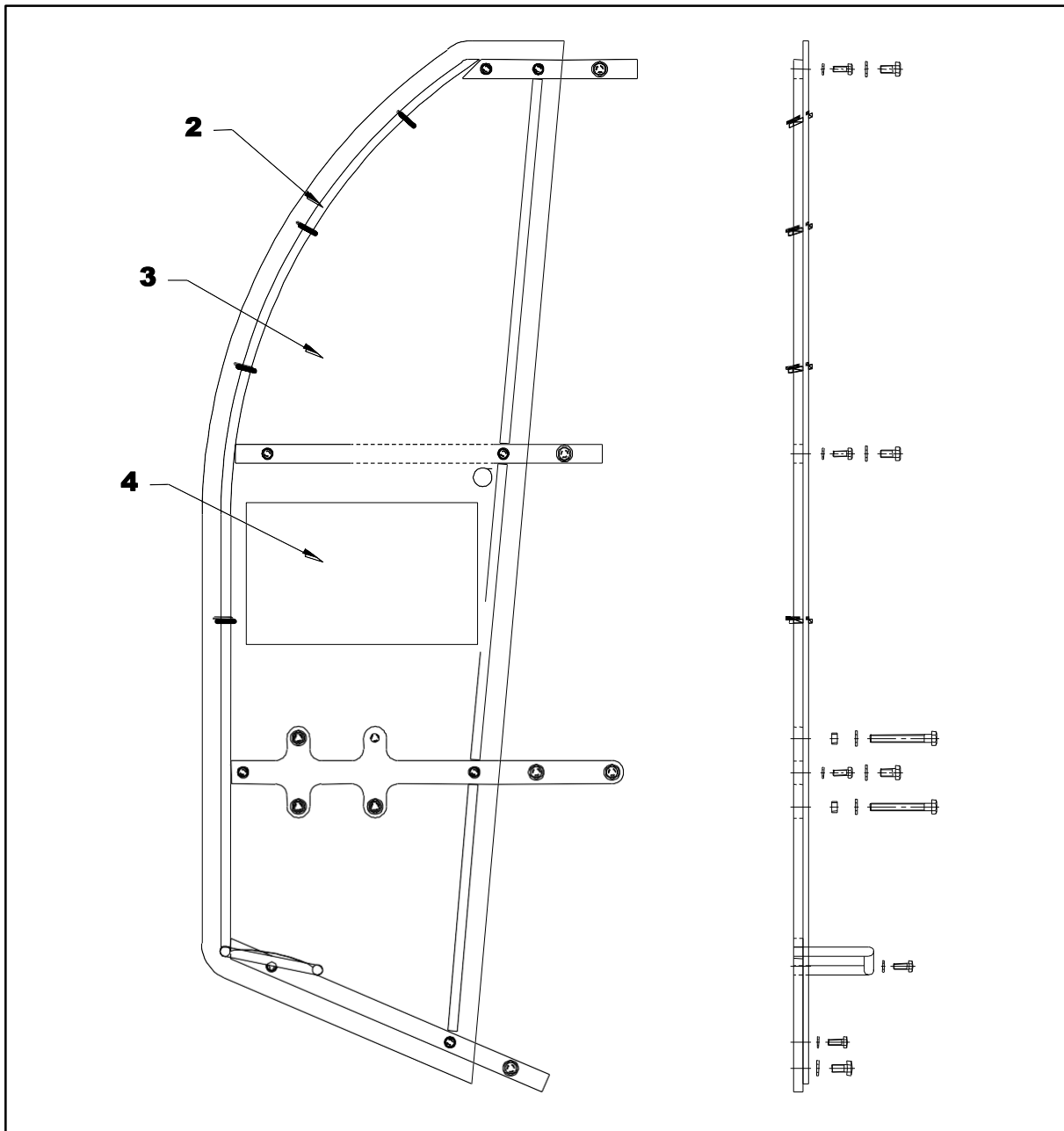
Part Number: 01 15 201 A



Item	Part No.	Part	Qty per Frame
1	01 15 201 A	GUARD FRAME ASSEMBLY – LH (complete)	1
2	01 15 211 K	GUARD FRAME – LH (Frame & fasteners only)	1
3	06 20 121 A	SCREEN LH including Decal	1
4	09 10 135 X	DECAL	1

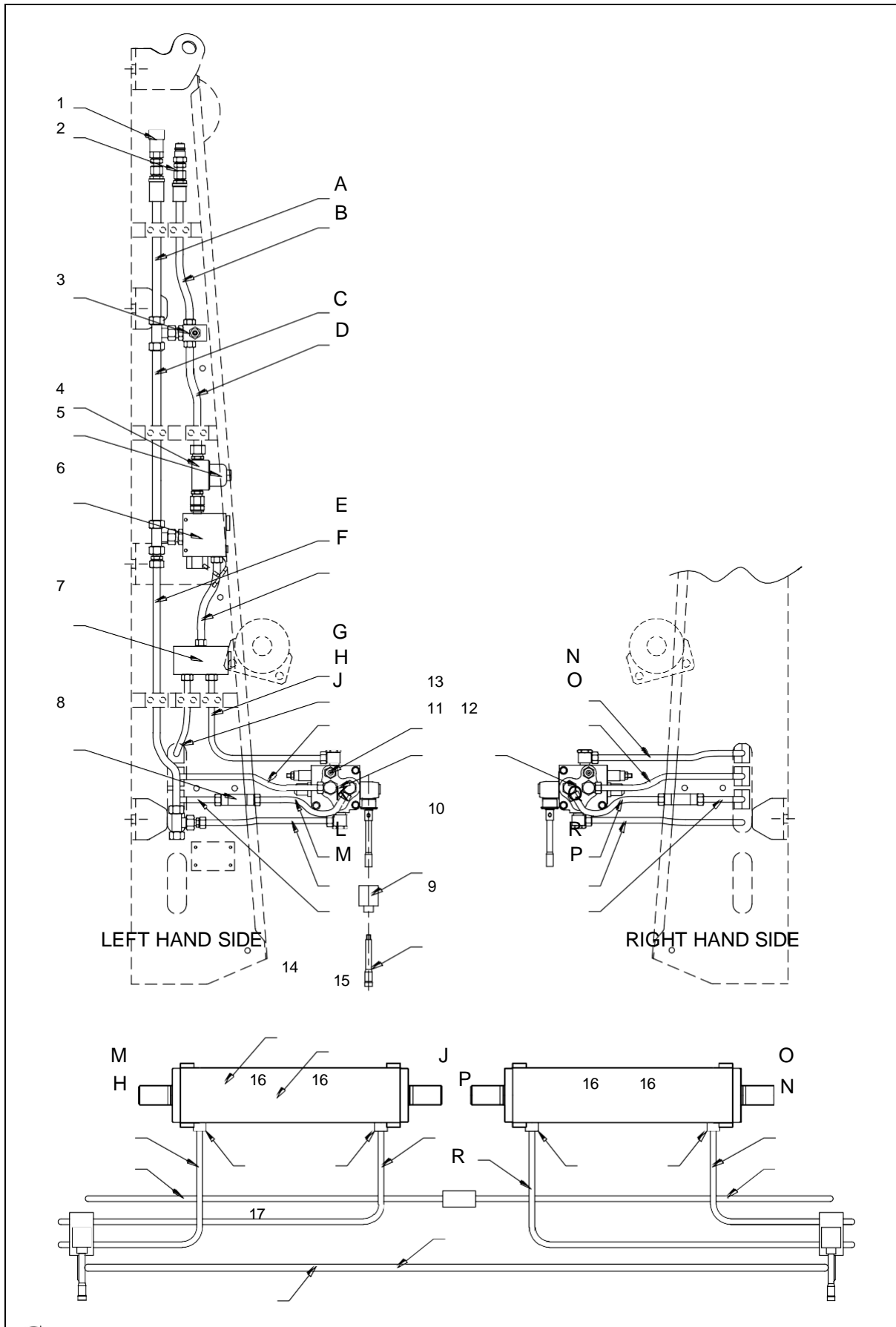
GUARD FRAME ASSEMBLY - RH

Part Number: 01 15 202 A



Item	Part No.	Part	Qty per Frame
1	01 15 202 A	GUARD FRAME ASSEMBLY – RH (complete)	1
2	01 15 212 K	GUARD FRAME – RH (Frame & fasteners only)	1
3	06 20 122 A	SCREEN RH including Decal	1
4	09 10 135 X	DECAL	1

HYDRAULIC SYSTEM



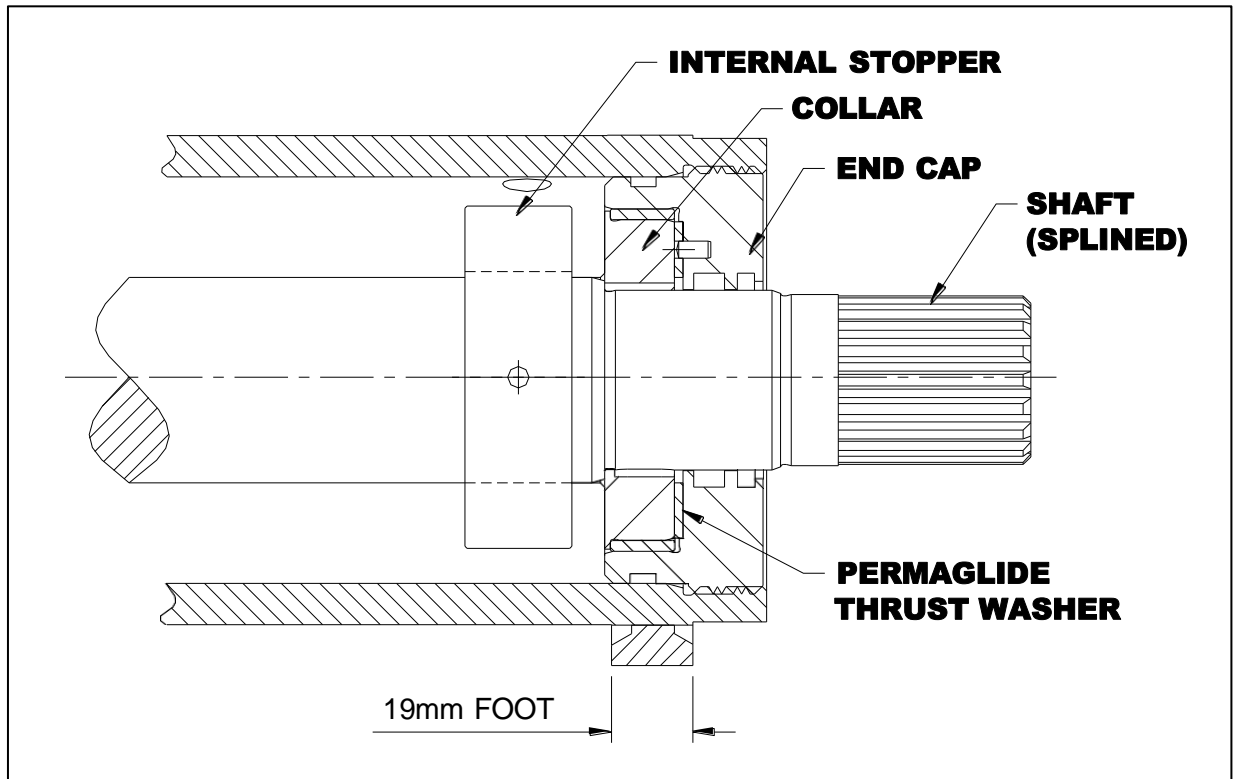
Section B HYDRAULIC SYSTEM continued

No.	Part No.	Part	Qty per Frame
1	HCF12 5.ISO	QUICK COUPLER ½ FEMALE	1
2	HCM12 5.ISO	QUICK COUPLER ½ MALE	1
3	HV.MAIN.RELIEVE	MAIN RELIEF VALVE	1
4	HV.FIL.125	FILTER (including element) O///T Brand	1
5	HV.FIL.EL.125	FILTER ELEMENT for O///T Brand	1
6	HV.FLO.REG.38	FLOW REGULATOR VALVE MODEL 38	1
7	HV.VDFR.12.40	FLOW DIVIDER VALVE	1
8	HV.FLO.REST.25	FLOW RESTRICTOR	2
9	01 40 010 R	VALVE HANDLE	2
10	HV.VCD.BOX	LEVER BOX ASSEMBLY (shaped square)	1
10b	HV.VCD.CAP	END CAP ASSY (shaped round & spring side)	1
11	HV.VCD20.LH	CONTROL VALVE LH (Includes Lever Box but excludes Fittings & Handle)	1
12	HV.VCD20.RH	CONTROL VALVE RH (Includes Lever Box but excludes Fittings & Handle)	1
13	HMINI3.8	MINITEST COUPLING	2
14	08 10 117 X	ACTUATOR	2
16	03 70 001 T	SPECIAL FITTING – Actuator Port	4
17	22 10 000 E	HYDRAULIC PIPE SET	1
17b	22 10 000	Individual pipes by special order - non plated	1

HYDRAULIC PIPES

Pipe	Description	Qty
A	UPPER OUTLET PIPE	1
B	UPPER INLET TO MAIN RELIEF VALVE	1
C	CENTRE RETURN PIPE	1
D	MAIN RELIEF VALVE TO FILTER	1
E	LOWER RETURN PIPE	1
F	FLOW REGULATOR VALVE TO FLOW DIVIDER VALVE	1
G	FLOW DIVIDER VALVE TO LH CONTROL VALVE	1
H	FLOW DIVIDER VALVE TO RH APRON CONNECTION	1
J	LH ACTUATOR RETURN PIPE	1
K	LH CONTROL VALVE TO FLOW RESTRICTOR PIPE	1
L	LH VALVE RETURN PIPE	1
M	FLOW RESTRICTOR TO LH ACTUATOR SUPPLY PORT	1
N	RH CONTROL VALVE SUPPLY PIPE FROM APRON CONNECTION	1
O	RH ACTUATOR RETURN PIPE	1
P	FLOW RESTRICTOR TO RH ACTUATOR SUPPLY PORT	1
Q	RH CONTROL VALVE TO FLOW RESTRICTOR	1
R	RH VALVE RETURN PIPE	1

ACTUATOR SERVICE PARTS



Part No.	Part	Qty per Actuator
08 10 117 X	ACTUATOR	1
A SKH25 000	SEAL & BRG KIT – For full overhaul (Genuine OEM) (includes stopper , thrust washers and seals)	1
A SKH25 300	SEAL KIT – End cap side only (Genuine OEM) (includes wiper, seal, o’ring, backup ring)	2
06 10 116 T	ACTUATOR INTERNAL STOPPER (use only genuine part)	1
A SKH25 002	THRUST WASHER	2
08 10 117 X SFT	*SHAFT <i>Confirm price AND supply actuator serial number</i>	1
08 10 117 X CO	COLLAR	2
08 10 117 X EC	END CAP (without seals)	2

NB

Observe internal timing marks **BEFORE** pulling piston and shaft from barrel

*** replacing shaft? Best Fulcrum Arms also renewed**

Make your notes below

Contact information:

Please feel free to contact us should you have any queries or need any further information:

Telephone: +27 (0) 21 386 0404

Fax: +27 (0) 21 385 1886

E-mail:

... General enquiries

query@mechlift.com

... **Sales enquiries**

sales@mechlift.com

Web address: www.mechlift.com

Physical Address: 84 Mobile Road
Airport Industria
Cape Town
7490
South Africa

Postal Address: 84 Mobile Road
Airport Industria
Cape Town
7490
South Africa

Please Note:

This spare parts book is valid for the period: **1st January 2023 till 31st December 2023.**

The given price reflects the price for each unit, part or kit, some assemblies may require more than one of the same unit, part or kit. (based on Euro/Pound rate 20:23)

Mechlift (Pty) Ltd reserves the right to change prices and /or part numbers without notification.

Copyright ©

This publication, or parts thereof, may not be reproduced in any form, by any method, for any purpose, without prior written permission from Mechlift (Pty) Ltd.

Liability

Whilst every attempt has been made to assure the accuracy of this manual, Mechlift (Pty) Ltd cannot accept responsibility for any errors, which may occur. All information given is subject to change without notice

