

MECHlift ML 220 Bin Lifter



Spare Parts Catalogue

- Prices effective 1st January 2011 -



CONTENTS:

| | Page |
|--|------|
| Identifying the lifter, finding its Model and Serial Number | 4 |
| Identifying the Lifter Sub-Assembly components | 5 |
| <i>..Lifter sub-assembly</i> | |
| Fulcrum Arm and Hub Assembly - LHS | 6 |
| Fulcrum Arm and Hub Assembly - RHS | 7 |
| H Frame | 8 |
| Comb Frame | 9 |
| Long Link Rod | 10 |
| Short Link Rod | 11 |
| Swing Frame | 12 |
| Re-Bush Service kits | 13 |
| <i>..Main Frame assembly</i> | |
| Main Frame | 14 |
| Carrier Frame | 15 |
| Guard Screen / Frame - LHS | 16 |
| Guard Screen / Frame - RHS | 17 |
| <i>..Hydraulics</i> | |
| Hydraulic System | 18 |
| Actuator Service Parts | 20 |



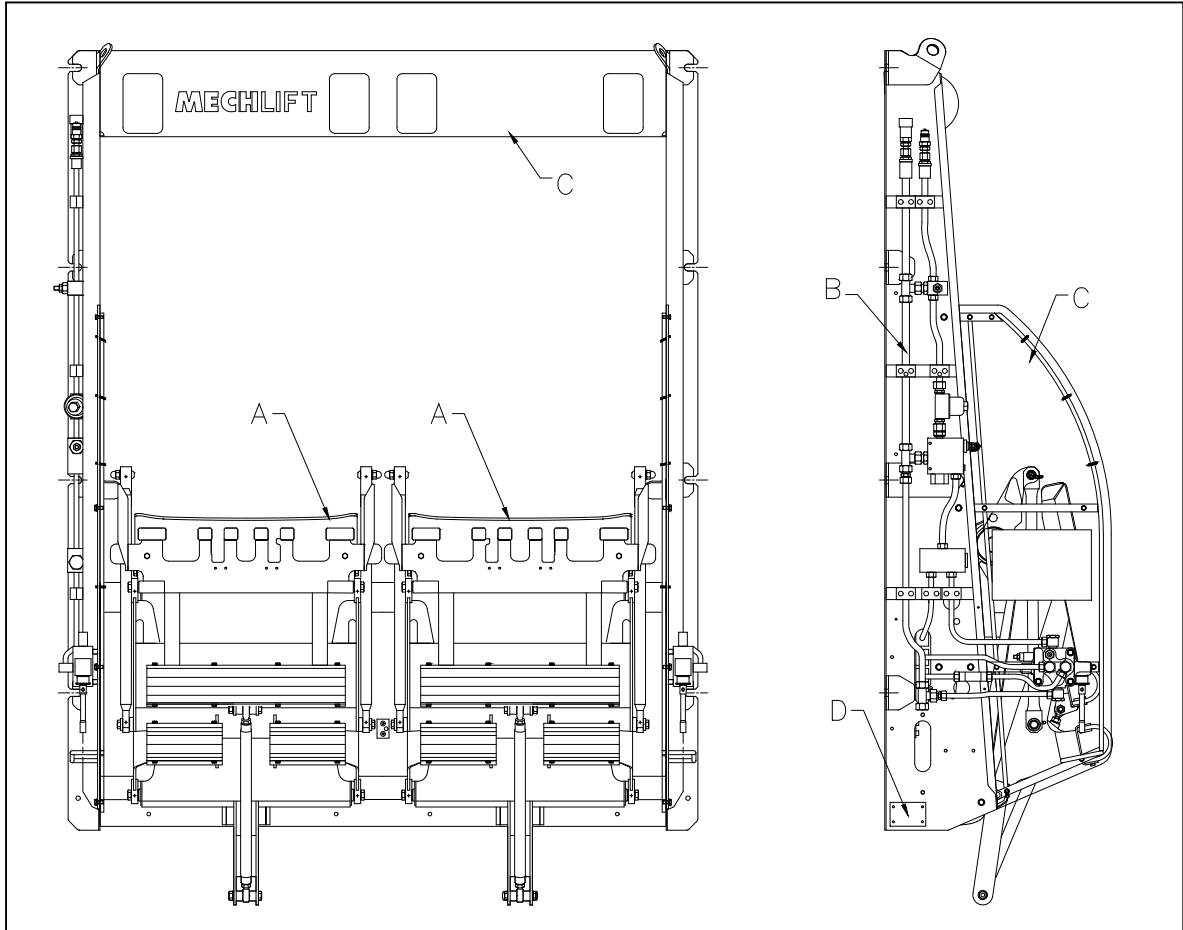
Where to contact Mechlif? See page 21

Partsmen:

- **Always** quote the Mechlif part numbers when ordering parts
- Part numbers ending in 1 or 3 usually refer to Left Hand Side parts
- Part numbers ending in 2 or 4 usually refer to Right Hand Side parts
- If in doubt, please feel free to contact Mechlif, we are always willing to assist

ML 220 BIN LIFTER ASSEMBLY

Part Number 22 00 000 A

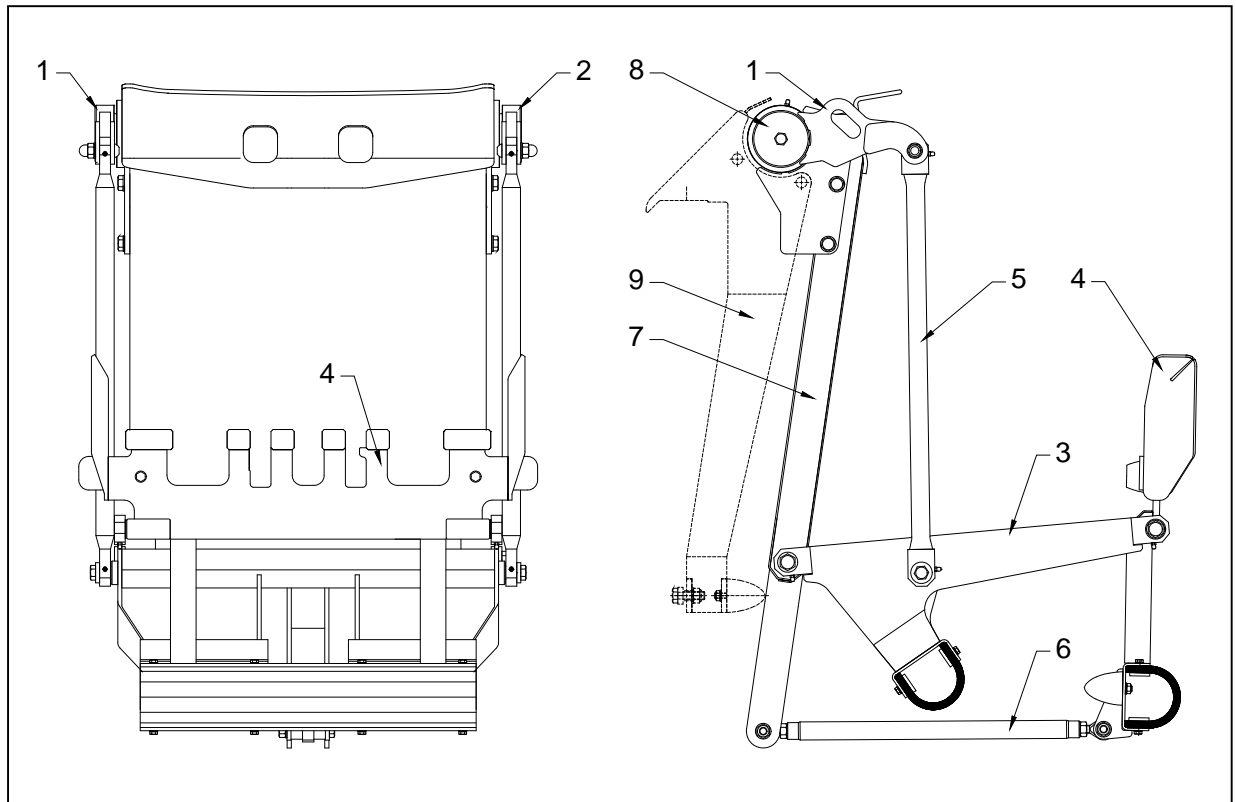


| IDENTIFICATION | |
|----------------|--|
| A | LIFTER SUB ASSEMBLIES (LH & RH are identical & interchangeable) |
| B | HYDRAULIC SYSTEM |
| C | MAIN FRAME ASSEMBLY (including Carriers, Guard Frames) |
| D | SERIAL AND MODEL NUMBERS are here. (lower left side of lifter) |

Ensure you have the Model and Serial Numbers on hand **BEFORE** ordering spares

LIFTER SUB ASSEMBLY

Part Number: 22 00 015 A



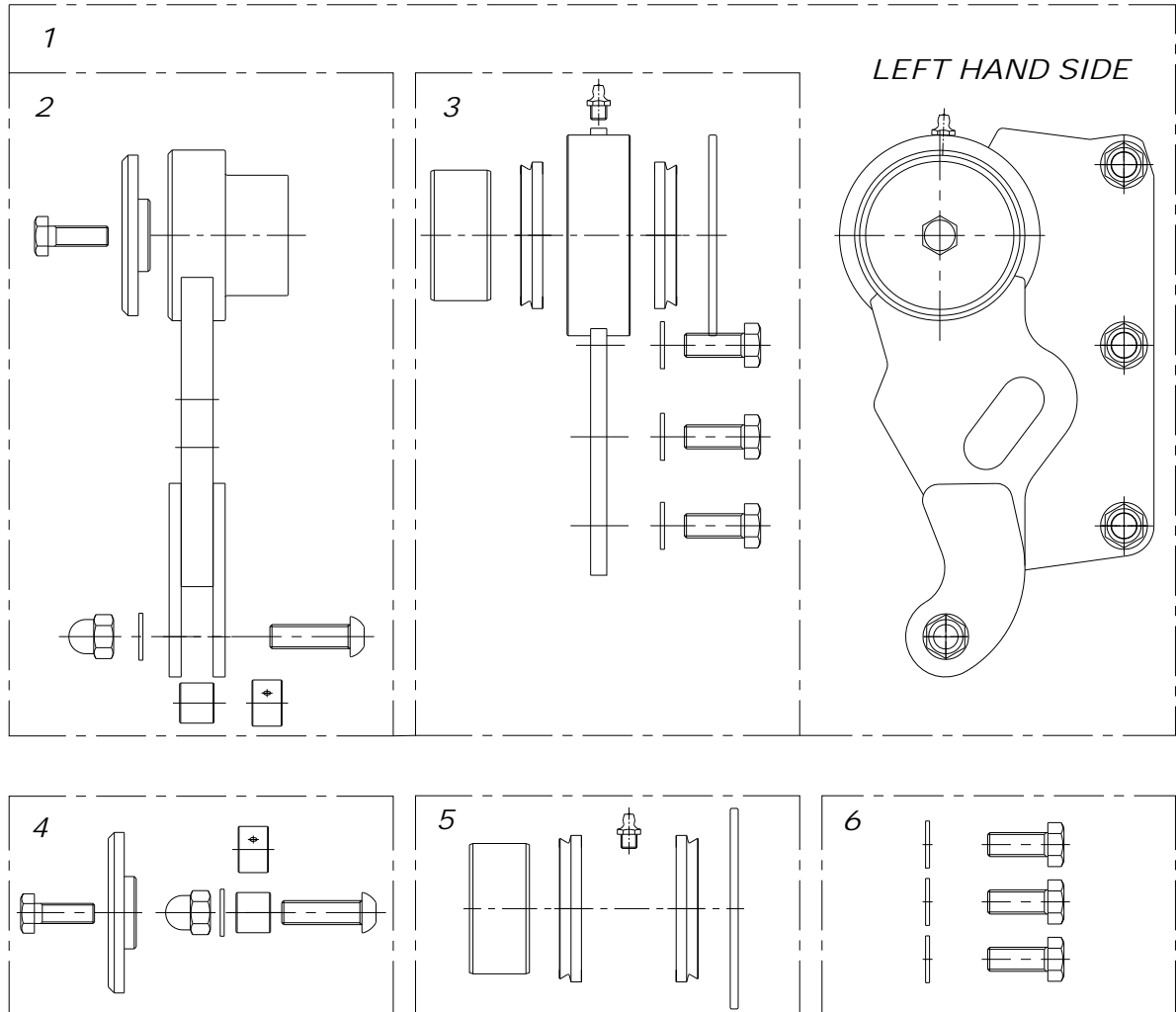
This page tells you what the above parts are called and on what page to find them.

| No. | PART | |
|-----|---|---------|
| 1 | FULCRUM ARM AND HUB ASSEMBLY - LEFT HAND | Page 6 |
| 2 | FULCRUM ARM AND HUB ASSEMBLY - RIGHT HAND | Page 7 |
| 3 | H-FRAME ASSEMBLY | Page 8 |
| 4 | COMB FRAME ASSEMBLY | Page 9 |
| 5 | LONG LINK ROD ASSEMBLY | Page 10 |
| 6 | SHORT LINK ROD ASSEMBLY (or Lower Link Rod) | Page 11 |
| 7 | SWING FRAME ASSEMBLY | Page 12 |
| 8 | ACTUATOR (hidden) and SERVICE PARTS | Page 20 |
| 9 | CARRIER FRAME | Page 15 |

This sub-assembly is sold as a ready part for R 44,840.00

FULCRUM ARM AND HUB ASSEMBLY - LEFT HAND

Part Number: 22 20 001 A

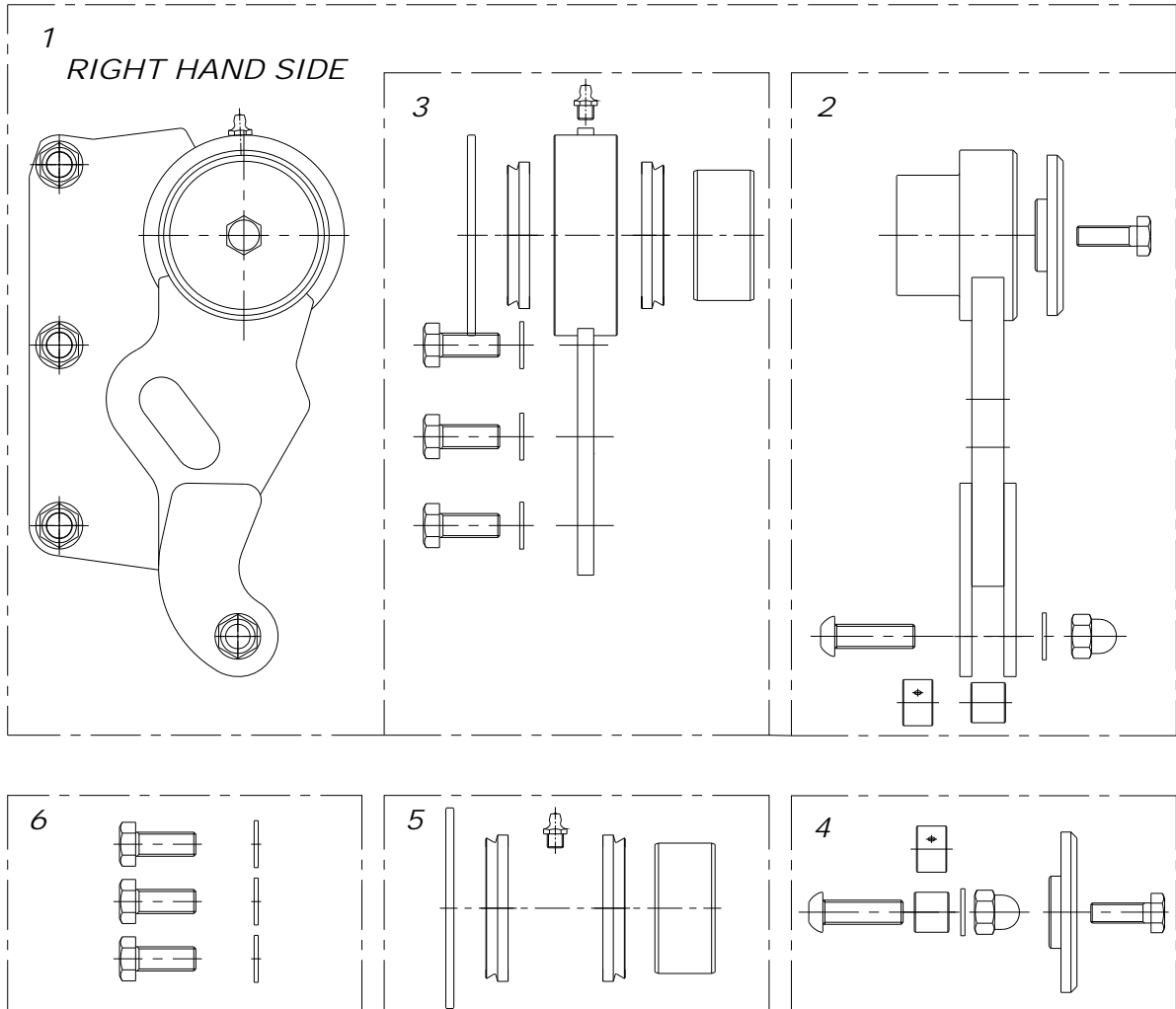


Refer to page 13 for single comprehensive re-bush kits covering the whole lifter

| Block | Part No. | Part | Qty | Unit Price |
|-------|-------------|--|-----|------------|
| 1 | 22 20 001 A | FULCRUM ARM & HUB ASSEMBLY LH (includes blocks 2+3) with trigger plate | 1 | R2 667.90 |
| 2 | 22 20 011 A | FULCRUM ARM ASSEMBLY LH (includes 4) | 1 | R1 615.30 |
| 3 | 22 20 021 A | SWING PLATE ASSEMBLY (includes 5 + 6) | 1 | R1069.00 |
| 4 | 07 92 210 K | BUSHING KIT – Fulcrum Arm | 1 | R 244.40 |
| 5 | 07 92 220 K | BUSHING KIT – Swing Plate | 1 | R 449.00 |
| 6 | 07 92 703 K | BOLT KIT – Swing Plate to Swing Frame | 1 | R 25.50 |

FULCRUM ARM AND HUB ASSEMBLY - RIGHT HAND

Part Number: 22 20 002 A

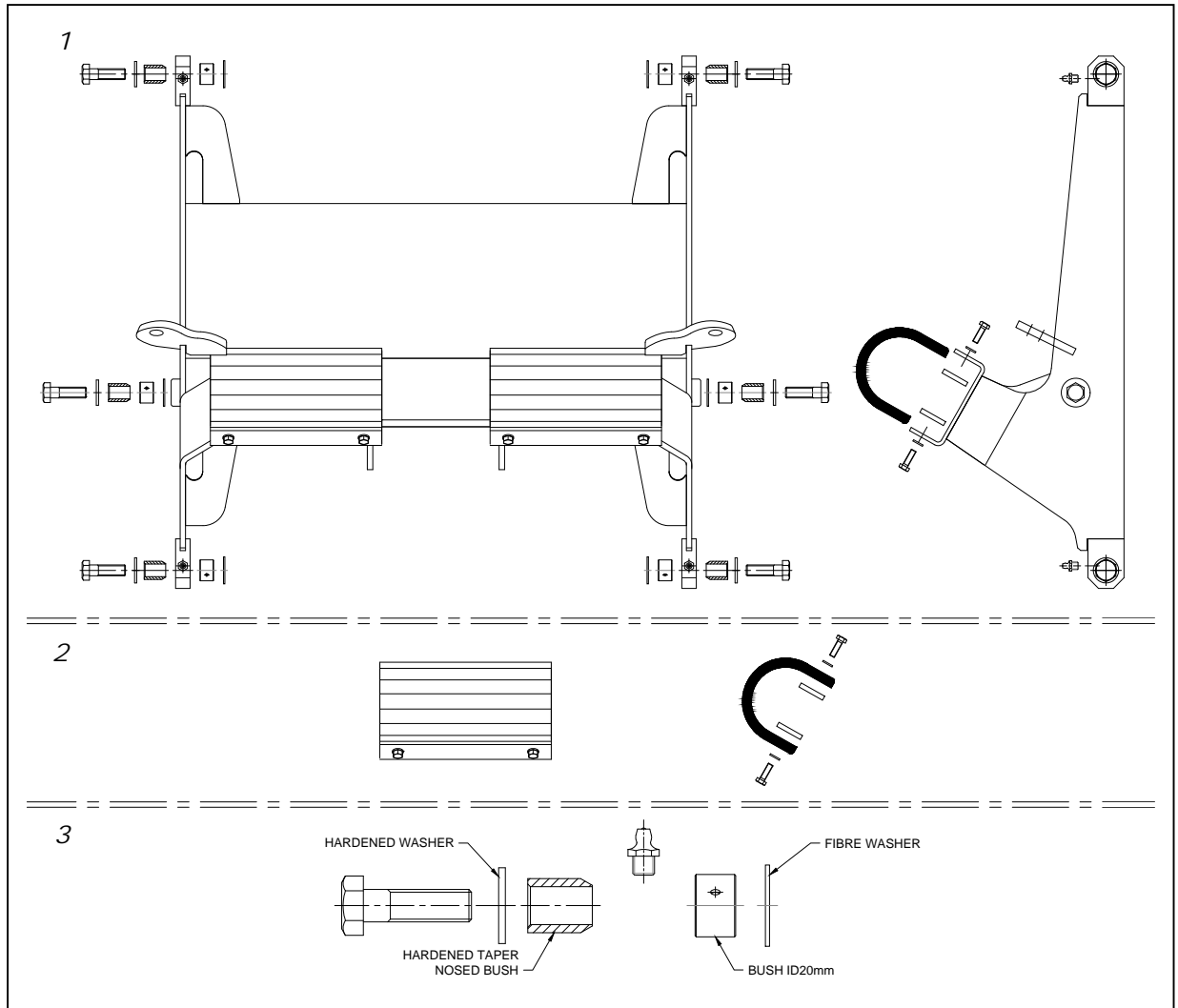


Refer to page 13 for single comprehensive re-bush kits covering the whole lifter

| Block | Part No. | Part | Qty | Unit Price |
|-------|-------------|---|-----|------------|
| 1 | 22 20 002 A | FULCRUM ARM & HUB ASSEMBLY RH (includes blocks 2+3) w/o trigger plate | 1 | R2 589.70 |
| 2 | 22 20 012 A | FULCRUM ARM ASSEMBLY RH (includes 4) | 1 | R1 615.30 |
| 3 | 22 20 022 A | SWING PLATE ASSEMBLY (includes 5 + 6) | 1 | R 993.70 |
| 4 | 07 92 210 K | BUSHING KIT – Fulcrum Arm | 1 | R 244.40 |
| 5 | 07 92 220 K | BUSHING KIT – Swing Plate | 1 | R 449.00 |
| 6 | 07 92 703 K | BOLT KIT – Swing Plate to Swing Frame | 1 | R 25.50 |

H-FRAME ASSEMBLY

Part Number: 22 40 000 A



| Block | Part No. | Part | Qty | Unit Price |
|-------|-------------|--|-----|------------|
| 1 | 22 40 000 A | H-FRAME ASSEMBLY (includes blocks 2 + 3) | 1 | R5 425.00 |
| 2 | 07 92 403 K | RUBBER PUSH PAD KIT – H-Frame | 2 | R 230.00 |
| 3 | 07 90 100 K | JOINT SERVICE KIT (Taper Nose Bush) | 6 | R 182.90 |

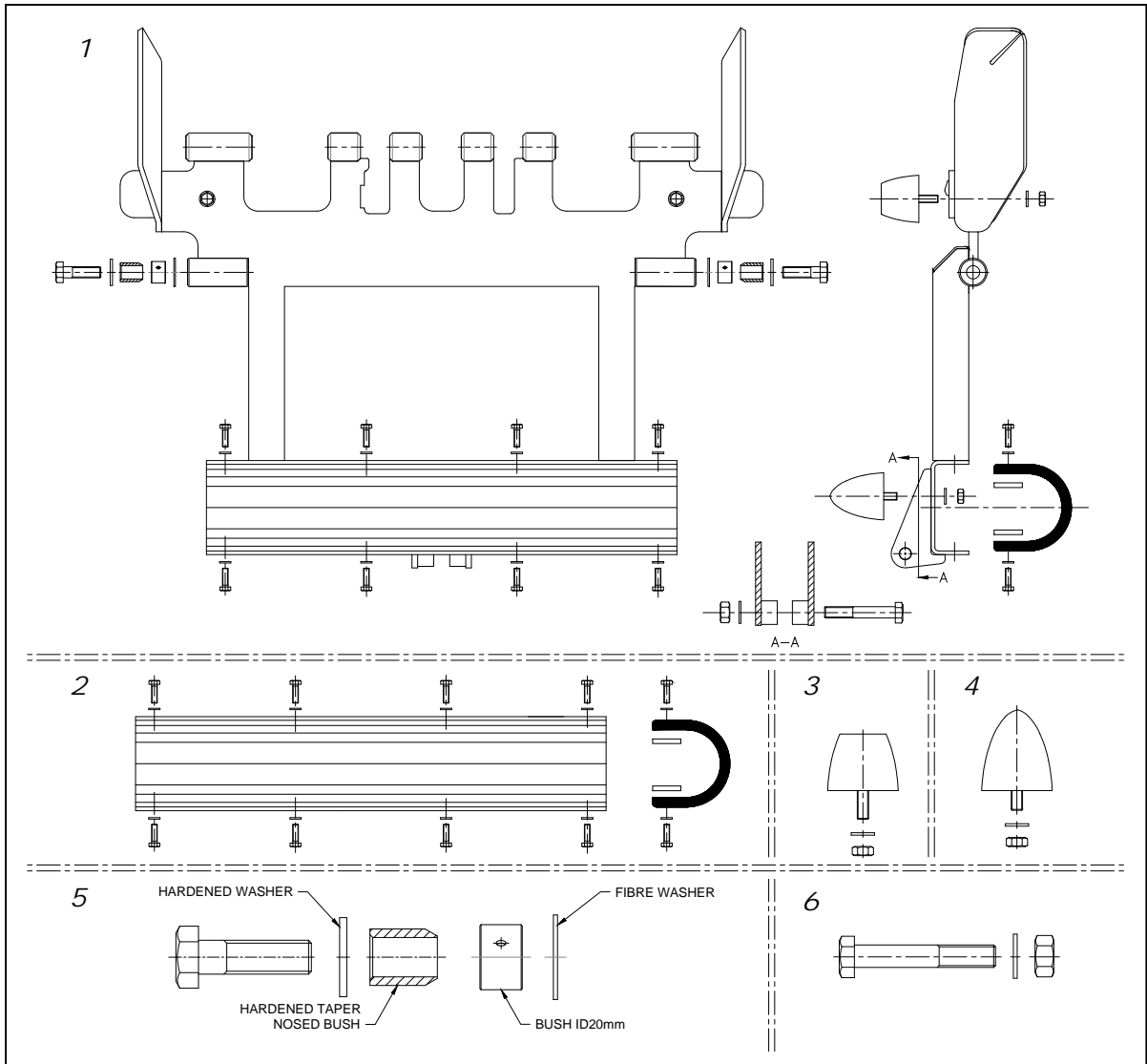
Refer to page 13 for single comprehensive re-bush kits covering the whole lifter

NOTE:

- Two rubber push pads per H-Frame
- Six joint service kits (Taper Nose Bush) per H-Frame

COMB FRAME ASSEMBLY

Part Number: 22 50 000 A

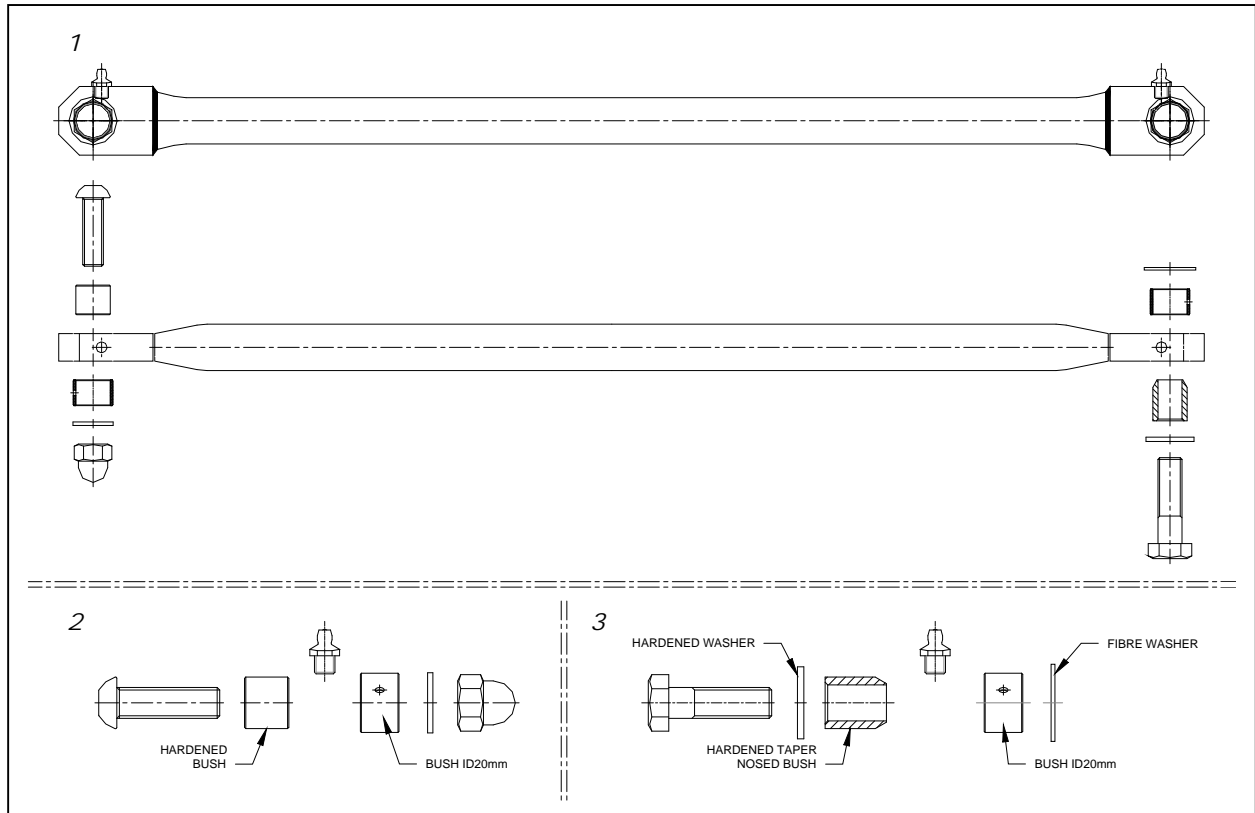


| Block | Part No. | Part | Qty | Unit Price |
|-------|-------------|---|-----|------------|
| 1 | 22 50 000 A | COMB FRAME ASSEMBLY (Includes blocks 2, 3, 4, 5 + 6) | 1 | R5 149.00 |
| 2 | 07 92 503 K | RUBBER PUSH PAD KIT – Comb Frame | 1 | R 451.75 |
| 3 | 05 10 232 K | CONICAL BUMP RUBBER KIT – Flat Top | 2 | R 145.00 |
| 4 | 05 10 115 K | CONICAL BUMP RUBBER KIT – 60mm | 2 | R 145.00 |
| 5 | 07 90 100 K | JOINT SERVICE KIT (Taper Nose Bush) | 2 | R 182.90 |
| 6 | | BOLT M12 x 80 + WASHER + NUT | 1 | R 13.40 |

Refer to page 13 for single comprehensive re-bush kits covering the whole lifter

LONG LINK ROD ASSEMBLY

Part Number: 22 61 100 A



| Block | Part No. | Part | Qty | Unit Price |
|-------|-------------|---|-----|------------|
| 1 | 22 61 100 A | LONG LINK ROD ASSEMBLY (includes blocks 2 + 3) | 1 | R 760.00 |
| 2 | 07 90 101 K | JOINT SERVICE KIT (Plain Bush) | 1 | R 176.60 |
| 3 | 07 90 100 K | JOINT SERVICE KIT (Taper Nose Bush) | 1 | R 182.90 |

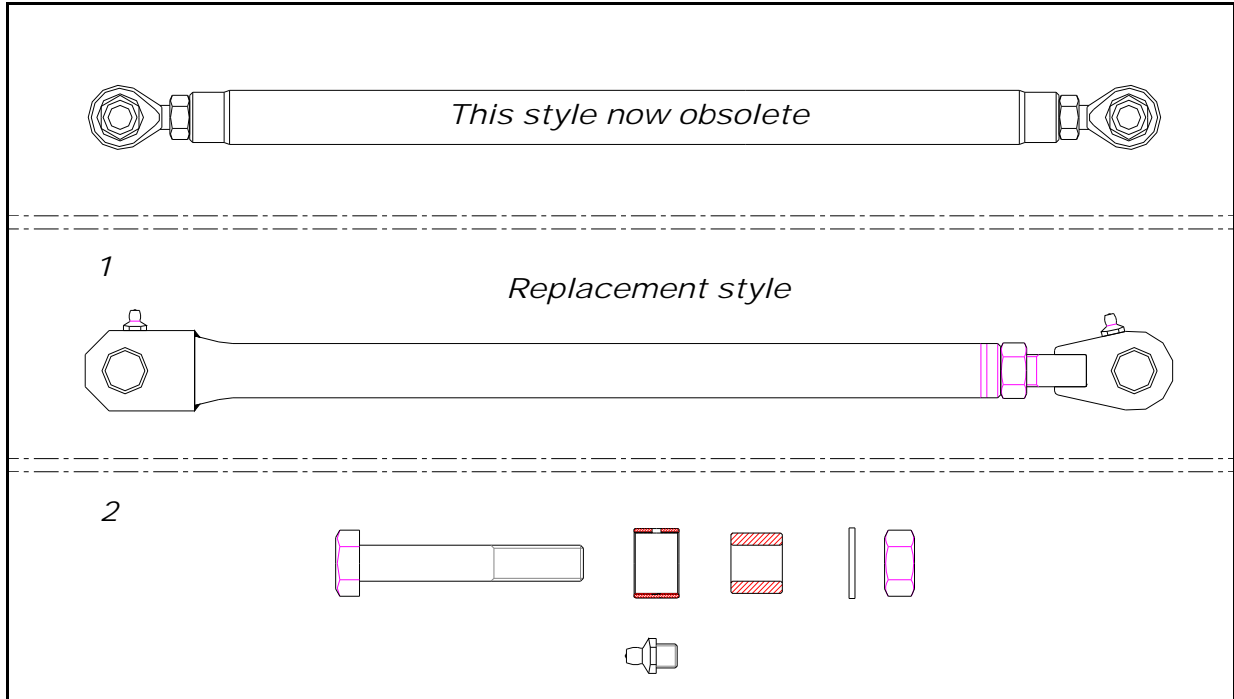
Refer to page 13 for single comprehensive re-bush kits covering the whole lifter

NOTE:

- Two Long Link Rods are required for each Sub Assembly, and four required per complete lifter.

SHORT LINK ROD ASSEMBLY

Part Number 22 62 100 A



| Block | Part No. | Part | Qty | Unit Price |
|-------|-------------|--|-----|------------|
| 1 | 22 62 100 A | SHORT LINK ROD ASSEMBLY (includes block 2, Bolt Kits x 2) | 1 | R 924.60 |
| 2 | 07 92 504 K | BOLT KIT – Short Link Rod Attachment Points | 2 | R 162.70 |

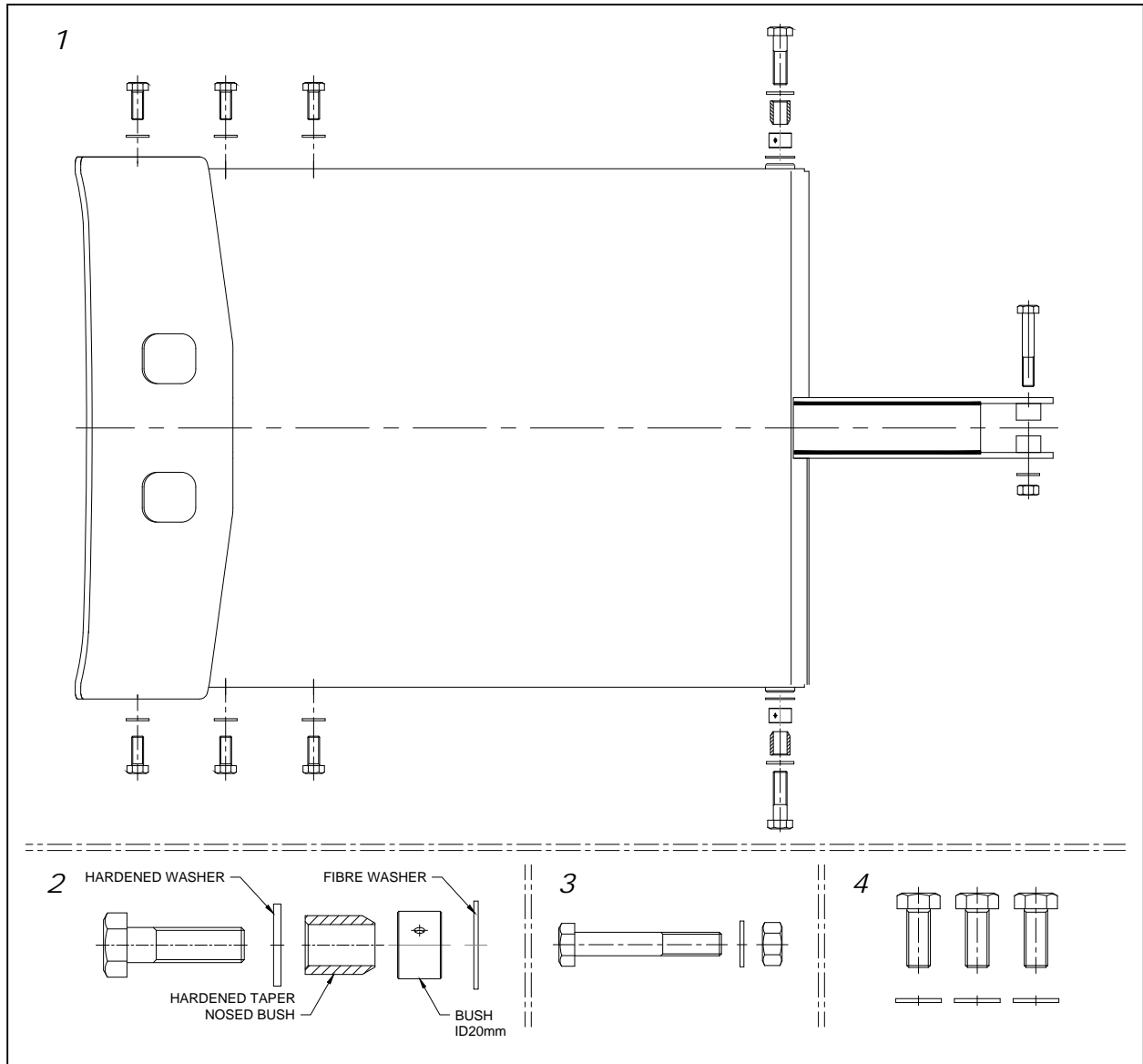
Refer to page 13 for single comprehensive re-bush kits covering the whole lifter

NOTE:

- One Short Link Rod is required for each sub assembly, and two are required per complete lifter.

SWING FRAME ASSEMBLY

Part Number: 22 70 000 A



| Block | Part No. | Part | Qty | Unit Price |
|-------|-------------|---|-----|------------|
| 1 | 22 70 000 A | SWING FRAME ASSEMBLY (includes blocks 2,3+4) | 1 | R5 276.20 |
| 2 | 07 90 100 K | JOINT SERVICE KIT (Taper Nose Bush) | 2 | R 182.90 |
| 3 | NPN | BOLT M12 x 80 + WASHER + NUT | 1 | R 13.40 |
| 4 | 07 92 703 K | BOLT KIT – Swing Plate to Swing Frame | 2 | R 25.50 |

Refer to page 13 for single comprehensive re-bush kits covering the whole lifter

RE-BUSH SERVICE KITS

| These service kits do not contain parts for servicing the actuators. (See page 20 for actuator parts) | | | |
|--|---|------------------|----------|
| Part No. | Part | Kit Price | Qty |
| 22 01 003 A | REBUSH KIT – BASIC (A Service) | R1 380.00 | 1 |
| consists of | Taper Nosed Bush - Hardened | | 6 |
| | Swivel Bush - Hardened | | 4 |
| | Bush ID20mm | | 10 |
| | M12 Dome Nut | | 2 |
| | M14 x50 Screw H8 | | 6 |
| | M12 x40 Button Head Screw | | 2 |
| | M12 Washer | | 4 |
| | M12 Nut | | 2 |
| | M12 x 80mm Bolt | | 2 |
| | 20mm Fibre Washer | | 6 |
| | M8 x1.25 Grease nipple – straight | | 12 |
| | M14 Washer - Hardened | | 6 |
| Part No. | Part | Kit Price | Qty |
| 22 01 006 A | REBUSH KIT – Comprehensive (B Service) | R2 616.00 | 1 |
| consists of | REBUSH KIT – BASIC <i>plus</i> | | 1 |
| | Bush ID60mm | | 2 |
| | V-Ring | | 4 |
| | Washer – Shaft end | | 2 |
| | Fulcrum arm spacer | | 2 |
| | M10 x30 Screw H8 | | 2 |

NOTE:

- these kits are for servicing a **single Sub Assembly** (as shown on page 5).
- **Two kits** are required to service the **Complete** lifter (i.e. both left and right hand sides).

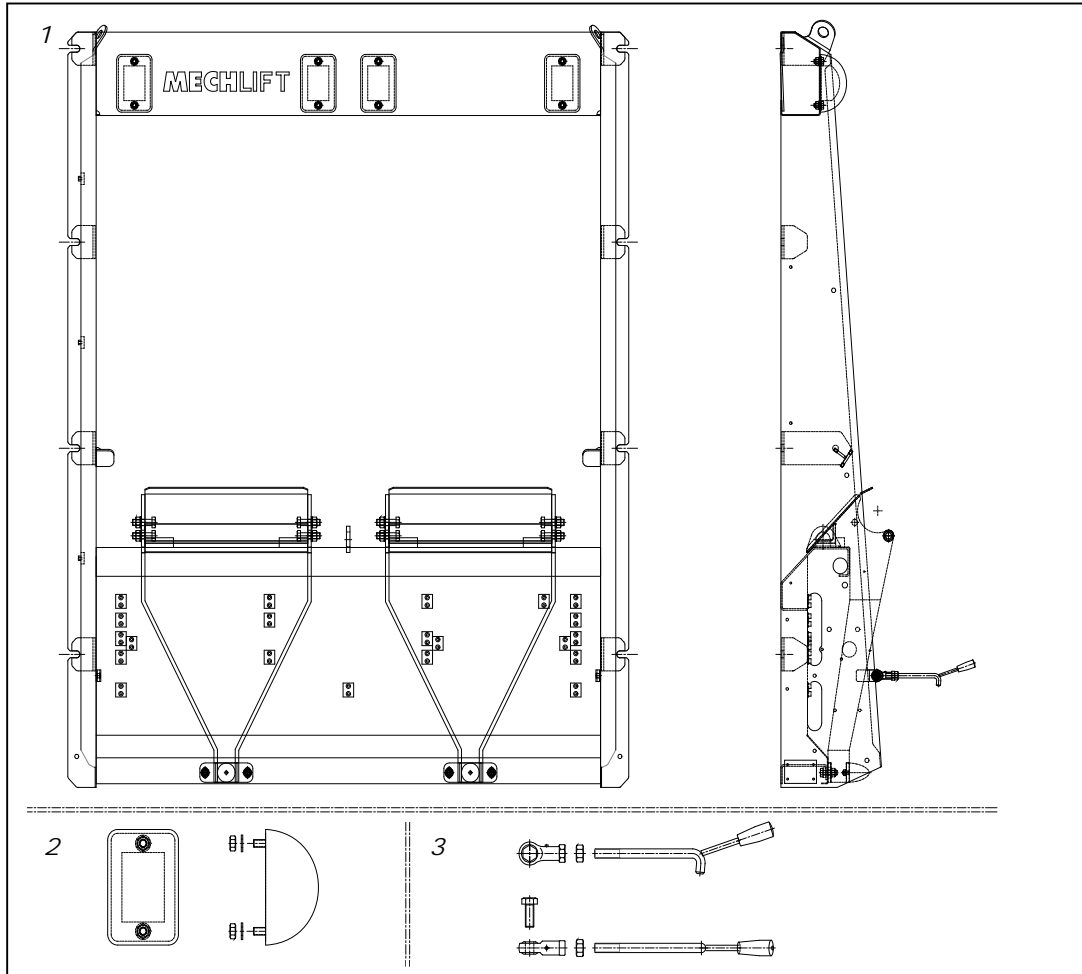
WEARING BUSHES ARE SOLD LOOSE but IN BULK QUANTITIES ONLY

Enquire at Mechlif

REMEMBER – It is more economical to buy the kits above than buying each joints kit separately

FRAME ASSEMBLY

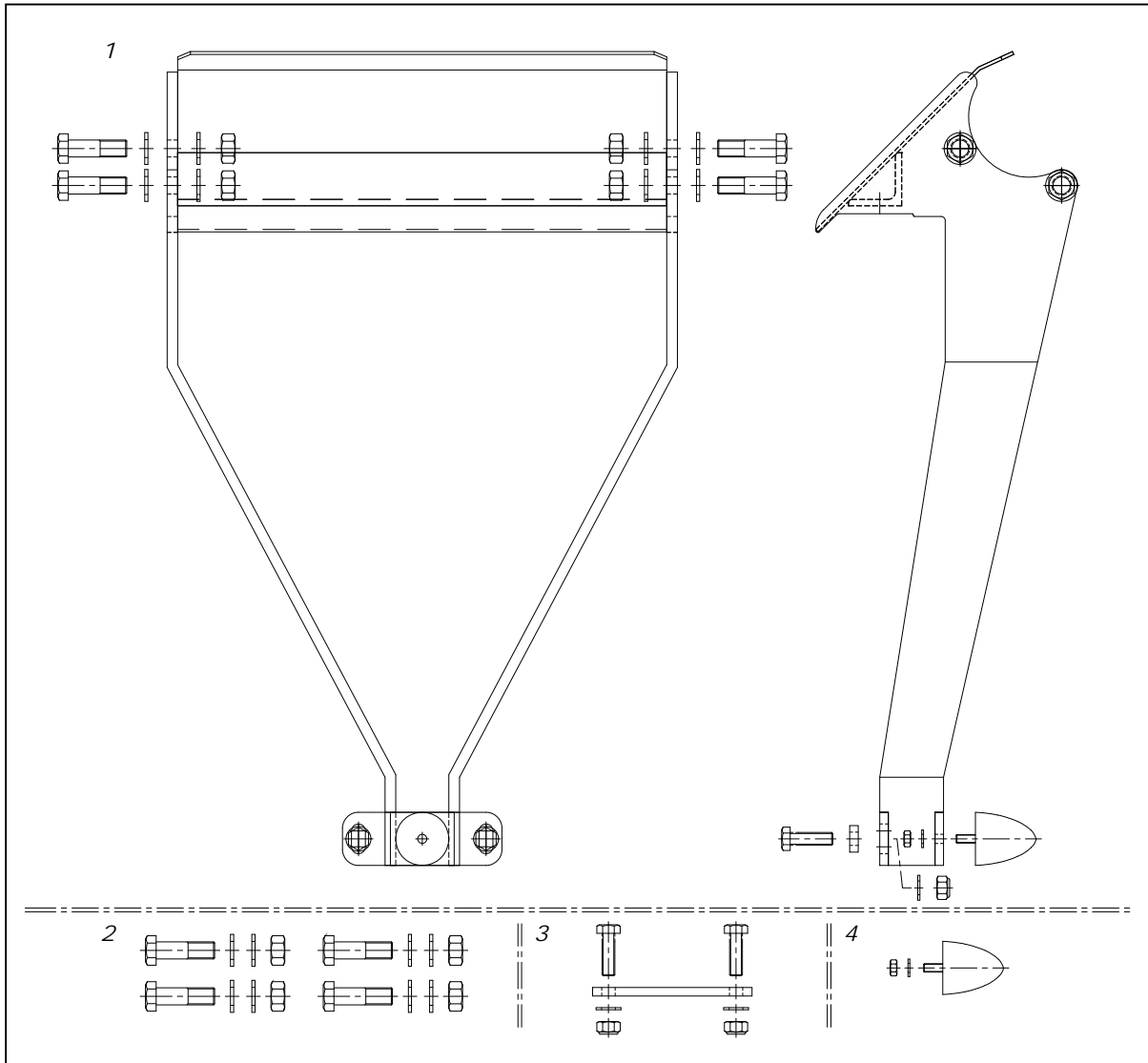
Part Number: 22 90 000 A



| Block | Part No. | Part | Qty | Unit Price |
|-------|-------------|--|-----|------------|
| 1 | 22 90 000 A | FRAME ASSEMBLY (includes blocks 2 + 3) | 1 | R18 631.00 |
| 2 | 07 90 103 K | WHEEL BUMP RUBBER KIT | 4 | R 421.30 |
| 3 | 07 92 913 K | HOOK KIT | 2 | R 652.50 |

CARRIER FRAME ASSEMBLY

Part Number: 22 91 200 A

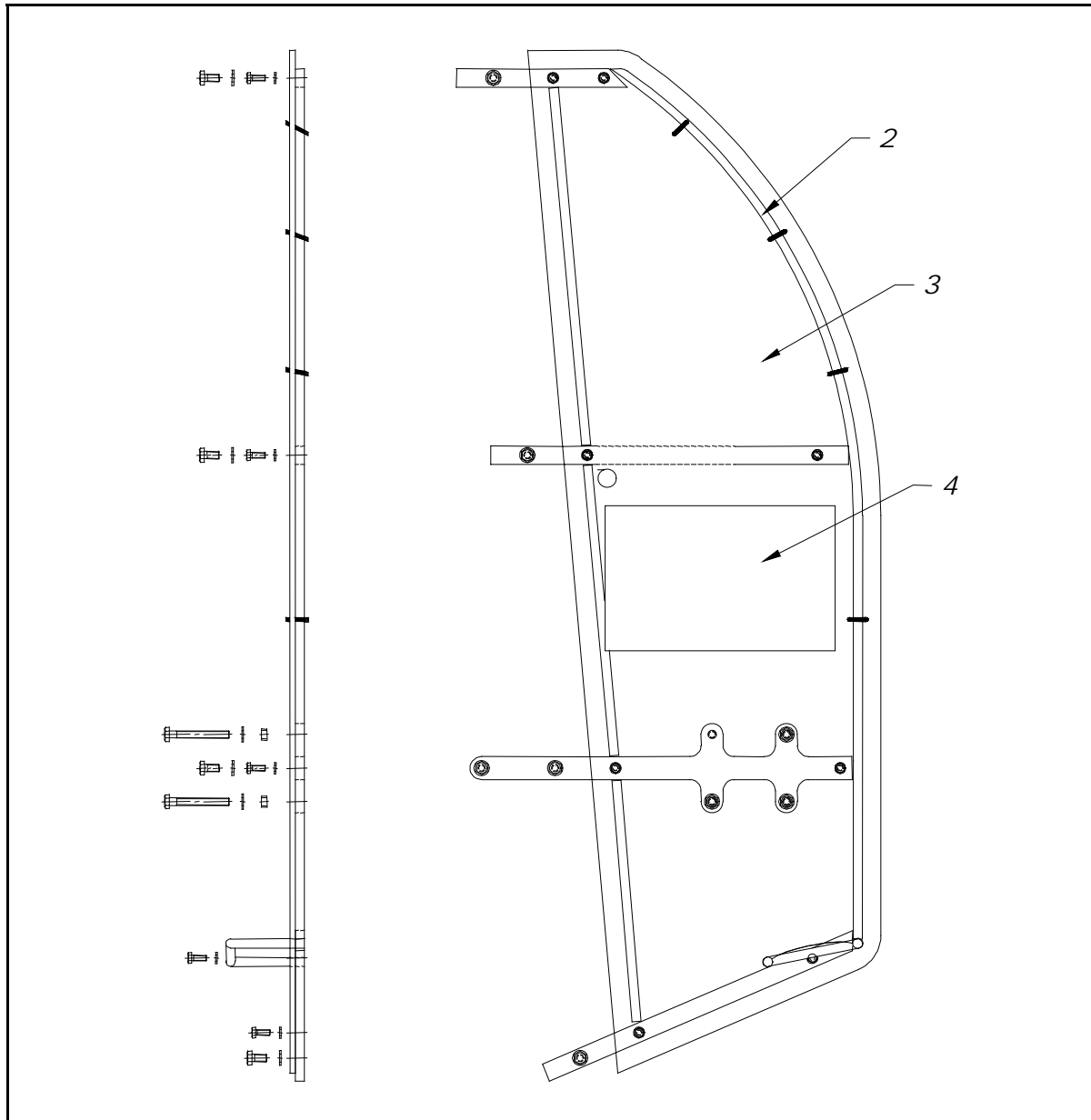


Section C – 1 (Carrier Frame Assembly):

| Block | Part No. | Part | Qty | Unit Price |
|-------|-------------|--|-----|------------|
| 1 | 22 91 200 A | CARRIER FRAME ASSEMBLY (includes blocks 2, 3 + 4) | 1 | R2 740.80 |
| 2 | 07 90 106 K | KIT – ACTUATOR FASTENERS | 1 | R 98.60 |
| 3 | 07 92 914 K | CARRIER LOWER MOUNT KIT | 1 | R 63.75 |
| 4 | 05 10 115 K | CONICAL BUMP RUBBER KIT | 1 | R 145.00 |

GUARD FRAME ASSEMBLY - LH

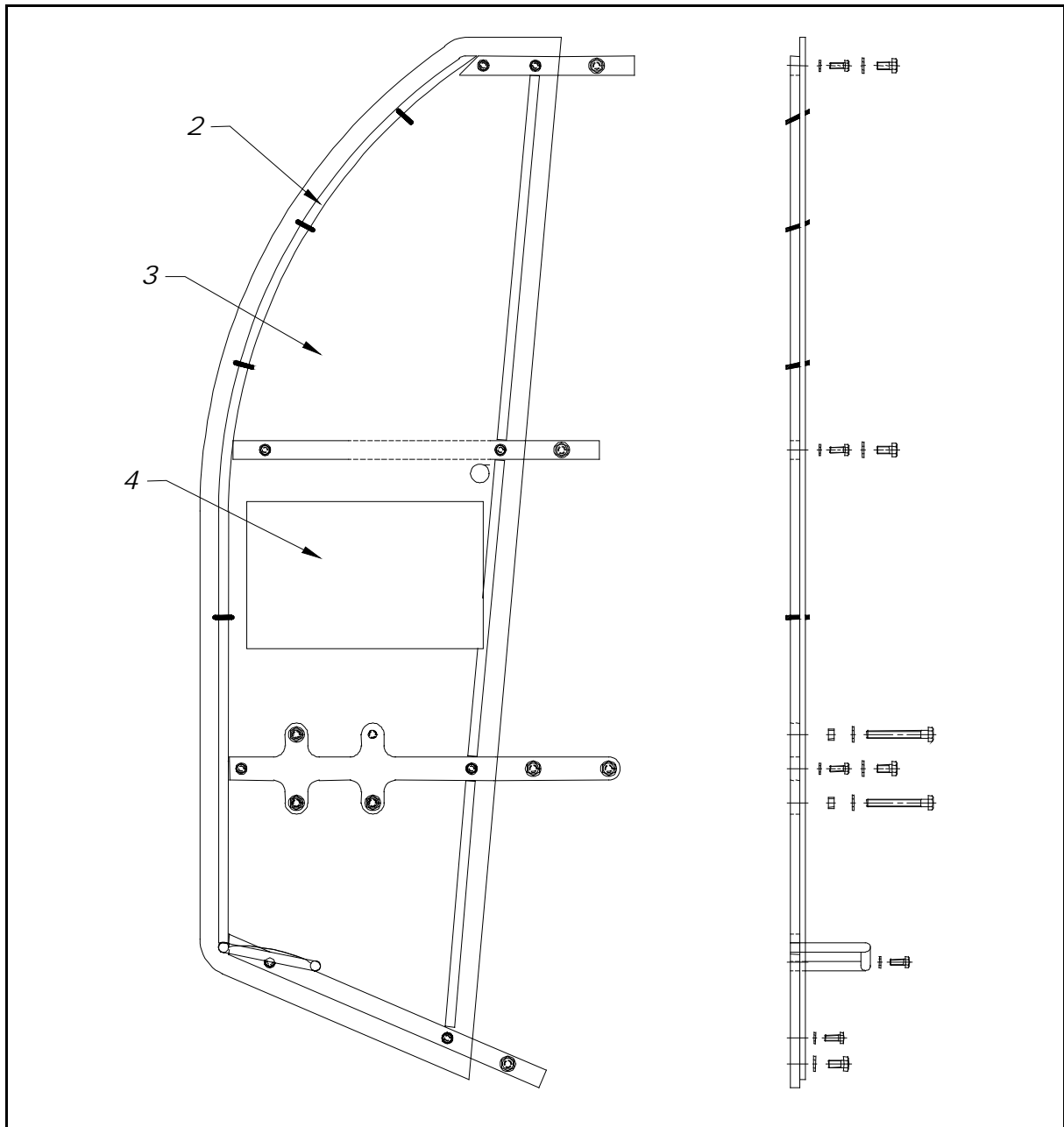
Part Number: 01 15 201 A



| Item | Part No. | Part | Qty | Unit Price |
|------|-------------|--|-----|------------|
| 1 | 01 15 201 A | GUARD FRAME ASSEMBLY – LH (complete) | 1 | R2 350.00 |
| 2 | 01 15 211 K | GUARD FRAME – LH (Frame & fasteners only) | 1 | R1 542.00 |
| 3 | 06 20 125 R | SCREEN (excluding decal) universal for LH & RH | 1 | R 782.40 |
| 4 | 09 10 135 X | DECAL | 1 | R 66.00 |

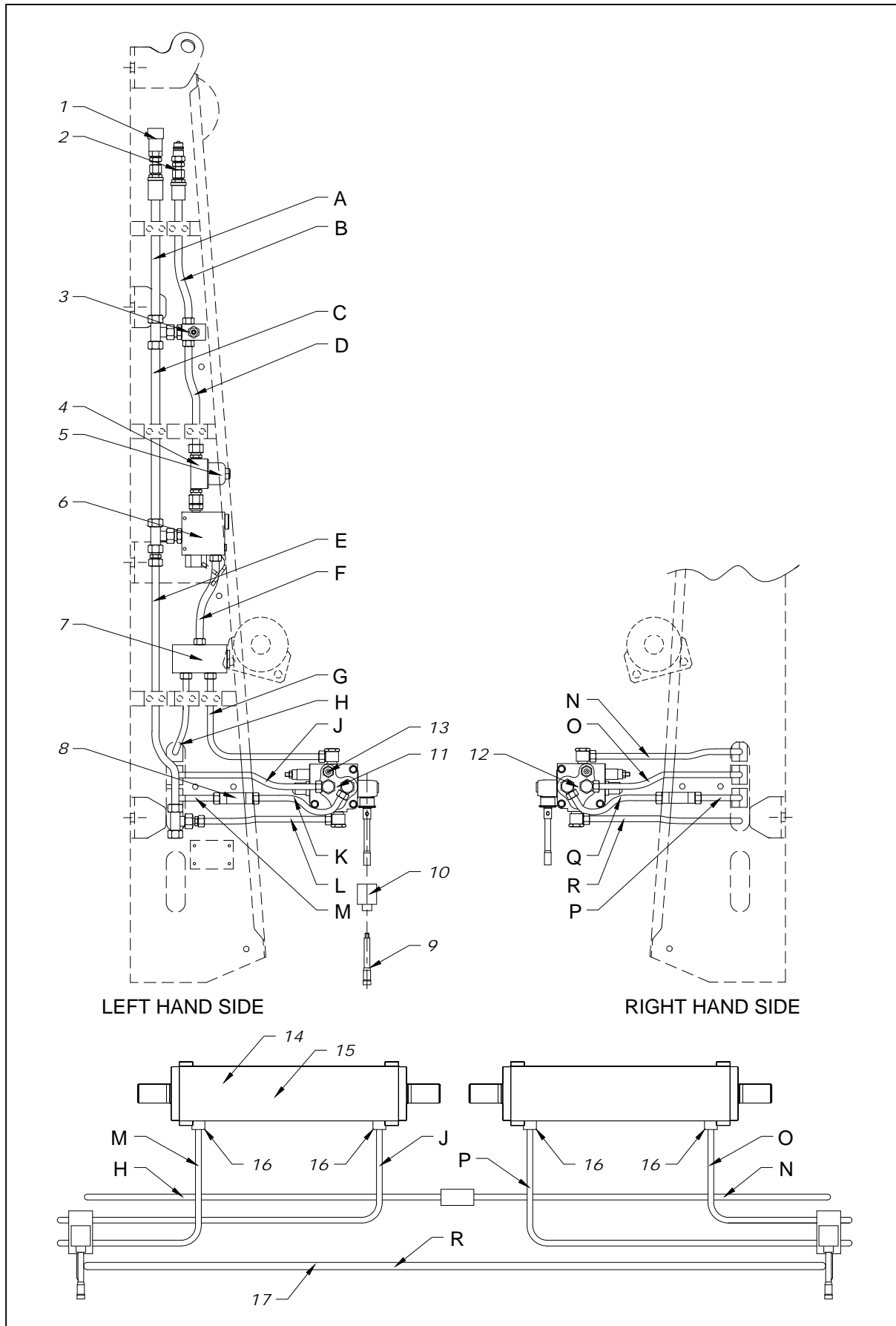
GUARD FRAME ASSEMBLY - RH

Part Number: 01 15 202 A



| Item | Part No. | Part | Qty | Unit Price |
|------|-------------|--|-----|------------|
| 1 | 01 15 202 A | GUARD FRAME ASSEMBLY – RH (complete) | 1 | R2 350.00 |
| 2 | 01 15 212 K | GUARD FRAME – RH (Frame & fasteners only) | 1 | R1 542.00 |
| 3 | 06 20 125 R | SCREEN (excluding decal) universal for LH & RH | 1 | R 782.40 |
| 4 | 09 10 135 X | DECAL | 1 | R 66.00 |

HYDRAULIC SYSTEM



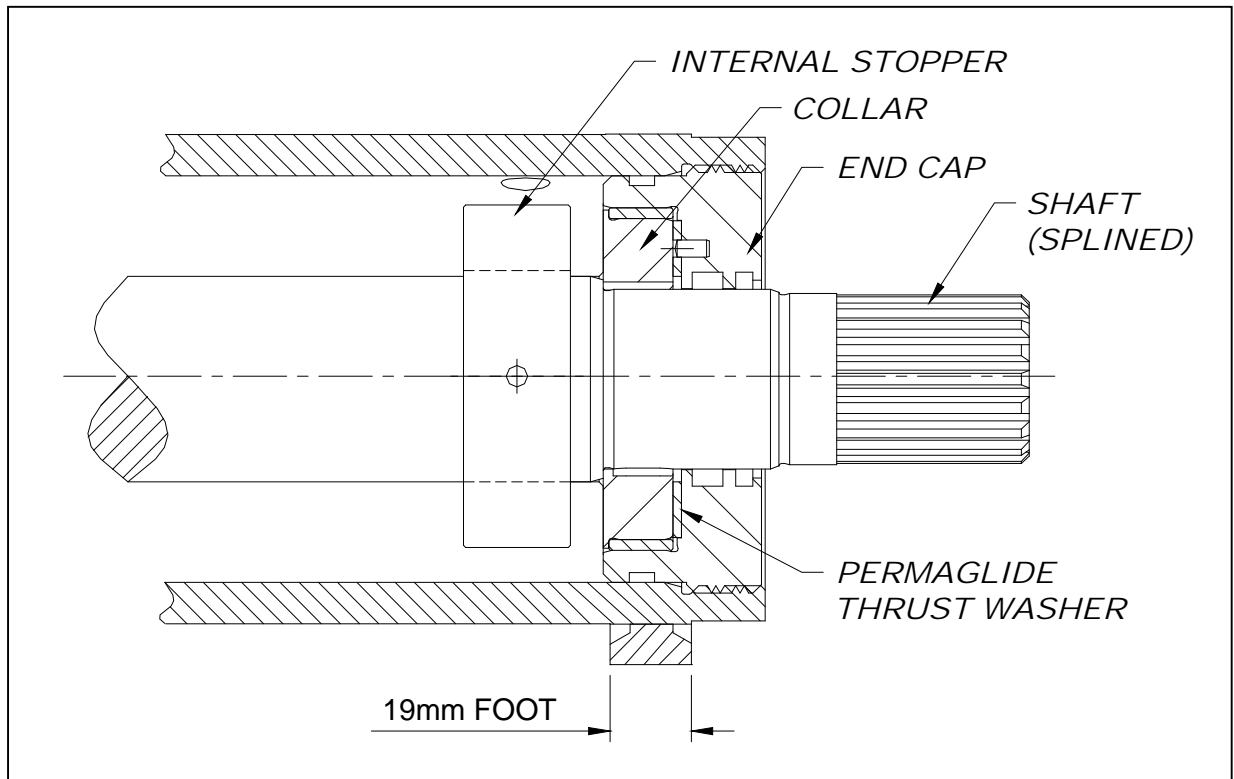
Section B
HYDRAULIC SYSTEM continued

| No. | Part No. | Part | Qty | Unit Price |
|-----|-----------------|--|-----|------------|
| 1 | HCF12 5.ISO | QUICK COUPLER ½ FEMALE | 1 | R 205.85 |
| 2 | HCM12 5.ISO | QUICK COUPLER ½ MALE | 1 | R 96.70 |
| 3 | HV.MAIN.RELIEVE | MAIN RELIEF VALVE | 1 | R 900.00 |
| 4 | HV.FIL.125 | FILTER (including element) | 1 | R1 860.00 |
| 5 | HV.FIL.EL.125 | FILTER ELEMENT | 1 | R 474.00 |
| 6 | HV.FLO.REG.38 | FLOW REGULATOR VALVE MODEL 38 | 1 | R2 440.00 |
| 7 | HV.VDFR.12.40 | FLOW DIVIDER VALVE | 1 | R2 666.00 |
| 8 | HV.FLO.REST.25 | FLOW RESTRICTOR | 2 | R 222.00 |
| 9 | 01 40 010 R | VALVE HANDLE | 1 | R 140.00 |
| 10 | HV.VCD.BOX | LEVER BOX ASSEMBLY (shaped square) | 1 | R 252.00 |
| 10b | HV.VCD.CAP | END CAP ASSY (shaped round & spring side) | 1 | R 172.00 |
| 11 | HV.VCD20.LH | CONTROL VALVE LH (Includes Lever Box but excludes Fittings & Handle) | 1 | R2 576.00 |
| 12 | HV.VCD20.RH | CONTROL VALVE RH (Includes Lever Box but excludes Fittings & Handle) | 1 | R2 495.50 |
| 13 | HMINI3.8 | MINITEST COUPLING | 2 | R 241.00 |
| 14 | 08 10 117 X | S2560 ACTUATOR (SPLINED) | 1 | R24 192.00 |
| 16 | 03 70 001 E | SPECIAL FITTING – Actuator Port | 4 | R 139.40 |
| 17 | 22 10 000 E | HYDRAULIC PIPE SET | 1 | R2 005.00 |
| 17b | 22 10 000 | Individual pipes by special order - non plated | 1 | R 175.00 |

HYDRAULIC PIPES

| Pipe | Description | Qty |
|------|--|-----|
| A | UPPER OUTLET PIPE | 1 |
| B | UPPER INLET TO MAIN RELIEF VALVE | 1 |
| C | CENTRE RETURN PIPE | 1 |
| D | MAIN RELIEF VALVE TO FILTER | 1 |
| E | LOWER RETURN PIPE | 1 |
| F | FLOW REGULATOR VALVE TO FLOW DIVIDER VALVE | 1 |
| G | FLOW DIVIDER VALVE TO LH CONTROL VALVE | 1 |
| H | FLOW DIVIDER VALVE TO RH APRON CONNECTION | 1 |
| J | LH ACTUATOR RETURN PIPE | 1 |
| K | LH CONTROL VALVE TO FLOW RESTRICTOR PIPE | 1 |
| L | LH VALVE RETURN PIPE | 1 |
| M | FLOW RESTRICTOR TO LH ACTUATOR SUPPLY PORT | 1 |
| N | RH CONTROL VALVE SUPPLY PIPE FROM APRON CONNECTION | 1 |
| O | RH ACTUATOR RETURN PIPE | 1 |
| P | FLOW RESTRICTOR TO RH ACTUATOR SUPPLY PORT | 1 |
| Q | RH CONTROL VALVE TO FLOW RESTRICTOR | 1 |
| R | RH VALVE RETURN PIPE | 1 |

ACTUATOR SERVICE PARTS



| Part No. | Part | Qty | Unit Price |
|-----------------|---|-----|------------|
| 08 10 117 X | S2560 ACTUATOR (Splined) – COMPLETE UNIT | 1 | R24 192.00 |
| A SKH25 000 | SEAL & BRG KIT – For full overhaul (Genuine OEM) (includes stopper , thrust washers and seals) | 1 | R3 479.75 |
| A SKH25 300 | SEAL KIT – End cap side only (Genuine OEM) (includes wiper, seal, o’ring, backup ring) | 2 | R 644.10 |
| 06 10 116 T | ACTUATOR INTERNAL STOPPER (use only genuine part) | 1 | R 320.00 |
| BPAW 48 P10 | THRUST WASHER | 2 | R 255.00 |
| 08 10 117 X SFT | SHAFT – EURO S2560 (Splined) | 1 | R7 250.00 |
| 08 10 117 X CO | COLLAR | 2 | R1 035.00 |
| 08 10 117 X EC | END CAP (without seals) | 2 | R1 090.00 |

NB

Observe internal timing marks **BEFORE** pulling piston and shaft from barrel

Contact information:

Please feel free to contact us should you have any queries or need any further information:

| | |
|-------------------|--|
| Telephone: | +27 (0) 21 386 0404 |
| Fax: | +27 (0) 21 385 1886 |
| E-mail: | info@mechlift.com |
| Web address: | www.mechlift.com |
| Physical Address: | 84 Mobile Road Airport Industria Cape Town 7490 South Africa |
| Postal Address: | 84 Mobile Road Airport Industria Cape Town 7490 South Africa |

Please Note:

This spare parts book is valid for the period: **1st January 2011 till 31st December 2011.**

The given price reflects the price for each unit, part or kit, some assemblies may require more than one of the same unit, part or kit.

Mechlift (Pty) Ltd reserves the right to change prices and /or part numbers without notification.

Copyright ©

This publication, or parts thereof, may not be reproduced in any form, by any method, for any purpose, without prior written permission from Mechlift (Pty) Ltd.

Liability

Whilst every attempt has been made to assure the accuracy of this manual, Mechlift (Pty) Ltd cannot accept responsibility for any errors, which may occur. All information given is subject to change without



